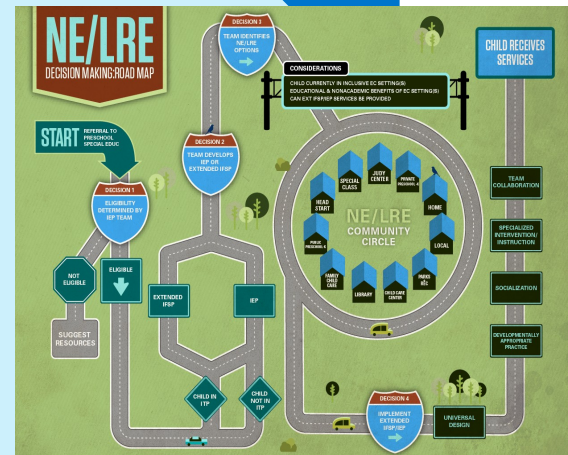


Online Professional Development Resource: *Preschool through Kindergarten NE/LRE Team Decision Making Module*

In Maryland, an **inclusive education** for young children of all ability levels, is one that supports their participation in a continuum of early childhood settings, community- and school-based, with appropriate modifications and accommodations, in order to achieve school readiness and positive outcomes throughout their educational experience. Natural environments and least restrictive environments ensure that young children with disabilities receive services in typical community-based early childhood settings and programs whenever possible, and only go to more restrictive or specialized settings when individual needs require it.



The **Preschool through Kindergarten NE/LRE Team Decision Making Module** has been developed to assist a team in making decisions appropriate for young children with disabilities.

The module highlights **best practices** for effective decision making by supporting:

- Extended IFSP and IEP teams in Maryland in selecting natural environments (NE) and least restrictive environment (LRE) for children with disabilities, ages three through kindergarten.
- Early childhood implementation teams in providing early intervention or preschool special education and related services to young children with disabilities in regular early childhood settings with children without disabilities.

Module Available on Maryland Learning Links

www.marylandlearninglinks.org

A direct link to the tutorial is provided on Maryland Learning Links in the Intervention and Education section of the Birth to Five Systems channel.

You are encouraged to complete a survey using the following link: <https://www.surveymonkey.com/s/PreschoolModule>