



Maryland Special Education/ Early Intervention Services Census Data & Related Tables

October 31, 2003

Maryland State Department of Education
Division of Planning, Results, and Information Management
200 West Baltimore Street
Baltimore, MD 21201-2595
(410) 767-0063

MSDE-PRIM 04100(R)003 2/04

Maryland State Board of Education

Edward L. Root
President

Jo Ann T. Bell
Vice President

Philip S. Benzil
Dunbar Brooks
Calvin D. Disney
Clarence A. Hawkins
Walter S. Levin
Karabelle Pizzigati
Maria C. Torres-Queral
John L. Wisthoff
Christopher J. Caniglia (*Student Member*)

Nancy S. Grasmick
Secretary-Treasurer of the Board and State Superintendent of Schools

A. Skipp Sanders
Deputy State Superintendent for Administration

Richard J. Steinke
Deputy State Superintendent for Instruction and Academic Acceleration

Ronald A. Peiffer
Deputy State Superintendent for Academic Policy

Gary Heath
Assistant State Superintendent of Planning, Results, and Information Management

**Maryland Special Education/Early Intervention Services
 Census Data & Related Tables
 October 31, 2003**

Table of Contents

Introduction

Definitions

Table

Page

1	Students with Disabilities as Percent of September Enrollment.....	1
2	Students with Disabilities by Disability	2
3	Students with Disabilities Trend in High Growth Disabilities	5
4	Students with Disabilities by Age.....	7
5	Students with Disabilities by Age and Disability	8
6	Students with Disabilities by Grade.....	9
7	Students with Disabilities by Grade and Disability	11
8	Students with Disabilities by Gender	13
9	Students with Disabilities by Race.....	14
10	Students with Disabilities Compared with General Education Students by Race.....	15
11	Students with Disabilities by Race and Disability.....	17
12	Students with Disabilities by Least Restrictive Environment Ages 3-21	18
12	Students with Disabilities by Least Restrictive Environment Ages 3-5.....	21,23
12	Students with Disabilities by Least Restrictive Environment Ages 6-21	24
12a-c	Students with Disabilities by Least Restrictive Environment in Rank Order.....	25
12d	Students with Disabilities Focused Monitoring Ages 3-5.....	28
12e	Students with Disabilities Focused Monitoring Ages 6-21	29
13	Students with Disabilities Served in Home/Hospital.....	30
14	Students with Disabilities Trend by LRE	31
15	Students with Disabilities by Race and LRE.....	32
16	Students with Disabilities Receiving ESY Service.....	33
17a	Students with Disabilities Placed by Their Parents in Private Schools Ages 3-21.....	34
17b	Students with Disabilities Placed by Their Parents in Private Schools Ages 3-5	35
18	Students with Disabilities by IEPs Older Than 13 Months and Evaluations Older Than 3 Years	36
19	Students with Disabilities in Nonpublic Schools.....	37
20	Students with Disabilities by Exit Reason and LEA	41
21	Students with Disabilities by Exit Reason and Disability	43
22	Students with Disabilities by Extended Suspensions	45

23	Students with Disabilities by Multiple Suspension	46
24	Maryland Part C Child Report	48
25	Part C Transition Report	50

Figures

1	Students with Disabilities by Disability	4
2	Students with Disabilities Trend in High Growth Disabilities	6
3	Students with Disabilities by LRE	19
4	Students with Disabilities Trend by LRE Setting	20
5	Preschool Students with Disabilities by LRE	22
6	Students with Disabilities by Exit Reason	42
7	Part C Eligibility for 12/1/03	49

Introduction

Annually, the Maryland State Department of Education (MSDE) collects information on students with disabilities (ages 3-21) who reside in the State of Maryland. Until 2003 this child count was taken on December 1. Beginning in 2003 it is taken the last Friday of October. In order to be included in this count, the child must be identified as having a disability and receiving active special education services on the last Friday of October.

The Special Services Information System (SSIS) consists of two separate data collections. The first is the last Friday of October Census, a count of all students receiving special education services on the last Friday of October of every year. Data on students who have exited special education are collected on June 30 of every year.

The SSIS database is used to compile information on Maryland students with disabilities. MSDE uses the SSIS database as:

- a source of information to meet planning, monitoring, and accounting responsibilities for special education;
- a recording and reporting tool for decisions made by the public agencies; and
- an instrument for federal reporting requirements.*

Definitions

Least Restrictive Environments

(A) Outside the General Ed Classroom < 21% - 6-21 year old enrolled in a comprehensive school who receives special education and related services *outside the general education setting* for less than 21% of the school day.

(B) Outside the General Ed Classroom 21-60% - 6-21 year old enrolled in a comprehensive school who receives special education and related services *outside the general education setting* for at least 21%, but no more than 60% of the school day.

(C) Outside the General Ed Classroom > 60% - 6-21 year old enrolled in a comprehensive school who receives special education and related services *outside the general education setting* for more than 60% of the school day.

(D) Homebound Placement – 6-21 year old who receives special education instruction at home.

(E) Hospital Placement – 3-21 year old who receives special education in a medical treatment facility on an inpatient basis.

(F) Public Separate Day School – 6-21 year old who spends more than 50% of the school day in separate public facility *that does not house programs for students without disabilities*.

(G) Private Separate Day School – 6-21 year old who spends more than 50% of the school day in private separate day facility *that does not house programs for students without disabilities*.

(H) Public Residential Facility – 6-21 year old who receives special education and related services for greater than 50% of the school day in a public residential facility.

(I) Private Residential Facility or Center - 6-21 year old who receives special education and related services for greater than 50% of the school day in a private residential facility.

Additional Preschool Least Restrictive Environments

(F) Public Separate Day School – 3-5 year old who receives ALL of their special education and related services in educational programs in public day schools specifically for students with disabilities.

(G) Private Separate Day School - 3-5 year old who receives ALL of their special education and related services in educational programs in private day schools specifically for students with disabilities

(H) Public Residential Facility - 3-5 year old who receives ALL of their special education and related services in publicly operated residential facility or residential medical facility on an inpatient basis.

(I) Private Residential Facility or Center - 3-5 year old who receives ALL of their special education and related services in privately operated residential facility or residential medical facility on an inpatient basis.

(J) Home – 3-5 year old who received ALL of their special education and related services in the principal residence of the child's family or caregivers.

(K) Itinerant Setting – 3-5 year old who receives all of their special education and related services at a school, hospital facility on an outpatient basis, or other location for a short period of time (i.e., no more than 3 hours per week).

(L) Reverse Mainstreaming –3-5 year old who receives special education in a class designed for disabled student where over 50% of the students are not disabled.

(M) Early Childhood Setting – 3-5 year old who receives all of their special education and related services in educational programs designed primarily for children without disabilities.

(N) Early Childhood Special Education Setting – 3-5 year old who receives all of their special education and related services in educational programs designed primarily for children with disabilities housed in regular school buildings or other community based settings.

(O) Part-Time Early Childhood Part-Time Early Childhood Special Education
– 3-5 year old who receives services in multiple settings.

***For more information on the Maryland Infants & Toddlers Program see <http://marylandpublicschools.org>**

Table 1

Students with Disabilities October 31, 2003 as Percent of September 30, 2003 Enrollment*: Maryland Public Schools
Special Education - Ages 3-21

Local Education Agency	1993			1998			2003		
	Sept. 30 Enrollment	Special Education	Percent	Sept. 30 Enrollment	Special Education	Percent	Sept. 30 Enrollment	Special Education	Percent
Total State	772,638	93,662	12.1%	841,671	110,671	13.1%	869,113	112,859	13.0%
Allegany	11,241	1,395	12.4	10,978	1,765	16.1	9,926	1,648	16.6%
Anne Arundel	69,020	8,629	12.5	74,079	10,455	14.1	74,508	10,512	14.1%
Baltimore City	113,354	17,260	15.2	106,540	18,686	17.5	91,738	15,313	16.7%
Edison Schools	NA	NA	NA	NA	NA	NA	2,311	216	9.3%
Baltimore	96,402	11,496	11.9	105,914	13,023	12.3	108,523	14,005	12.9%
Calvert	12,295	1,522	12.4	15,241	2,078	13.6	17,423	2,373	13.6%
Caroline	5,168	700	13.5	5,685	796	14.0	5,400	709	13.1%
Carroll	23,730	3,001	12.6	27,224	3,835	14.1	28,832	3,701	12.8%
Cecil	13,809	2,101	15.2	15,550	2,364	15.2	16,475	2,554	15.5%
Charles	20,101	2,549	12.7	22,263	2,869	12.9	25,610	2,489	9.7%
Dorchester	5,179	718	13.9	5,143	671	13.0	4,803	570	11.9%
Frederick	30,451	3,429	11.3	35,383	4,653	13.2	38,950	4,762	12.2%
Garrett	5,116	735	14.4	5,082	762	15.0	4,810	731	15.2%
Harford	34,775	4,648	13.4	38,909	5,551	14.3	40,200	6,103	15.2%
Howard	34,416	3,947	11.5	41,858	4,285	10.2	47,833	5,070	10.6%
Kent	2,738	342	12.5	2,891	351	12.1	2,565	339	13.2%
Montgomery	113,429	11,699	10.3	127,933	15,891	12.4	139,201	17,334	12.5%
Prince George's	115,918	11,434	9.9	130,259	13,189	10.1	137,285	15,098	11.0%
Queen Anne's	5,889	618	10.5	6,888	1,012	14.7	7,526	1,037	13.8%
St. Mary's	13,063	1,764	13.5	14,743	2,036	13.8	16,261	2,222	13.7%
Somerset	3,387	398	11.8	3,113	412	13.2	2,951	359	12.2%
Talbot	4,319	436	10.1	4,590	544	11.9	4,459	458	10.3%
Washington	19,156	2,807	14.7	20,159	2,981	14.8	20,338	2,780	13.7%
Wicomico	13,471	1,442	10.7	14,330	1,581	11.0	14,402	1,711	11.9%
Worcester	6,211	592	9.5	6,916	881	12.7	6,783	765	11.3%

* LEA totals only - does not include State Operated Programs (SOP)

**September 30 Enrollment includes Special Education students. Table will remain in this format to preserve historical integrity.

Table 2
 Students with Disabilities by Disability
 October 31, 2003
 Ages 3-21

	Total Special Education	Mental Retardation		Hearing Impaired		Deaf		Speech/ Language		Visually Impaired		Emotion- ally Disturbed		Ortho- pedi- cally Impaired	
		Total	Percent	Total	Percent	Total	Percent	Total	Percent	Total	Percent	Total	Percent	Total	Percent
Total State	113,760	6,814	5.99%	666	0.59%	715	0.63%	29,349	25.80%	573	0.50%	9,727	8.55%	537	0.47%
Allegany	1,648	123	7.46%	0	0.00%	6	0.36%	357	21.66%	0	0.00%	78	4.73%	2	0.12%
Anne Arundel	10,512	439	4.18%	48	0.46%	11	0.10%	2,589	24.63%	27	0.26%	881	8.38%	15	0.14%
Baltimore City	15,313	1,903	12.43%	90	0.59%	14	0.09%	3,425	22.37%	87	0.57%	2,418	15.79%	104	0.68%
Edison Schools	216	20	9.26%	0	0.00%	0	0.00%	63	29.17%	1	0.46%	20	9.26%	0	0.00%
Baltimore	14,005	759	5.42%	83	0.59%	29	0.21%	3,195	22.81%	40	0.29%	1,559	11.13%	49	0.35%
Calvert	2,373	95	4.00%	14	0.59%	2	0.08%	649	27.35%	6	0.25%	137	5.77%	6	0.25%
Caroline	709	53	7.48%	2	0.28%	4	0.56%	255	35.97%	0	0.00%	30	4.23%	3	0.42%
Carroll	3,701	131	3.54%	32	0.86%	5	0.14%	1,345	36.34%	12	0.32%	193	5.21%	25	0.68%
Cecil	2,554	103	4.03%	14	0.55%	3	0.12%	683	26.74%	9	0.35%	133	5.21%	15	0.59%
Charles	2,489	299	12.01%	8	0.32%	3	0.12%	699	28.08%	8	0.32%	272	10.93%	5	0.20%
Dorchester	570	51	8.95%	3	0.53%	2	0.35%	150	26.32%	6	1.05%	20	3.51%	1	0.18%
Frederick	4,762	143	3.00%	32	0.67%	7	0.15%	1,556	32.68%	24	0.50%	329	6.91%	24	0.50%
Garrett	731	28	3.83%	5	0.68%	0	0.00%	204	27.91%	0	0.00%	69	9.44%	3	0.41%
Harford	6,103	244	4.00%	24	0.39%	8	0.13%	1,680	27.53%	20	0.33%	323	5.29%	26	0.43%
Howard	5,070	200	3.94%	25	0.49%	13	0.26%	1,723	33.98%	27	0.53%	280	5.52%	32	0.63%
Kent	339	27	7.96%	2	0.59%	0	0.00%	69	20.35%	1	0.29%	13	3.83%	0	0.00%
Montgomery	17,334	559	3.22%	131	0.76%	125	0.72%	5,567	32.12%	61	0.35%	1,141	6.58%	84	0.48%
Prince George's	15,098	946	6.27%	117	0.77%	36	0.24%	2,732	18.10%	46	0.30%	1,287	8.52%	115	0.76%
Queen Anne's	1,037	25	2.41%	0	0.00%	4	0.39%	195	18.80%	3	0.29%	39	3.76%	2	0.19%
St. Mary's	2,222	102	4.59%	14	0.63%	3	0.14%	684	30.78%	10	0.45%	127	5.72%	6	0.27%
Somerset	359	51	14.21%	0	0.00%	3	0.84%	51	14.21%	1	0.28%	17	4.74%	1	0.28%
Talbot	458	66	14.41%	2	0.44%	1	0.22%	155	33.84%	1	0.22%	12	2.62%	3	0.66%
Washington	2,780	172	6.19%	12	0.43%	2	0.07%	675	24.28%	8	0.29%	187	6.73%	7	0.25%
Wicomico	1,711	202	11.81%	6	0.35%	4	0.23%	391	22.85%	10	0.58%	53	3.10%	6	0.35%
Worcester	765	60	7.84%	2	0.26%	4	0.52%	251	32.81%	0	0.00%	8	1.05%	3	0.39%
Total Local Education Agencies	112,859	6,801	6.03%	666	0.59%	289	0.26%	29,343	26.00%	408	0.36%	9,626	8.53%	537	0.48%
Department of Juvenile Services	180	11	6.11%	0	0.00%	0	0.00%	4	2.22%	0	0.00%	77	42.78%	0	0.00%
Carter	9	2	22.22%	0	0.00%	0	0.00%	0	0.00%	0	0.00%	3	33.33%	0	0.00%
Cheltenham Detention Facility	16	3	18.75%	0	0.00%	0	0.00%	1	6.25%	0	0.00%	9	56.25%	0	0.00%
Cumberland Youth Services Ctr.	25	1	4.00%	0	0.00%	0	0.00%	1	4.00%	0	0.00%	2	8.00%	0	0.00%
Hickey School	74	2	2.70%	0	0.00%	0	0.00%	1	1.35%	0	0.00%	37	50.00%	0	0.00%
Maryland Youth Residence Ctr.	8	1	12.50%	0	0.00%	0	0.00%	0	0.00%	0	0.00%	0	0.00%	0	0.00%
Noyse Childrens Center	11	1	9.09%	0	0.00%	0	0.00%	0	0.00%	0	0.00%	5	45.45%	0	0.00%
Schaffer House	1	0	0.00%	0	0.00%	0	0.00%	0	0.00%	0	0.00%	1	100.00%	0	0.00%
Thomas JS Waxter Children's Ctr.	11	1	9.09%	0	0.00%	0	0.00%	0	0.00%	0	0.00%	9	81.82%	0	0.00%
Thomas O'Farrell	20	0	0.00%	0	0.00%	0	0.00%	1	5.00%	0	0.00%	11	55.00%	0	0.00%
Western Maryland Children's Detention Ctr.	5	0	0.00%	0	0.00%	0	0.00%	0	0.00%	0	0.00%	0	0.00%	0	0.00%
Adult Corrections	97	2	2.06%	0	0.00%	0	0.00%	2	2.06%	0	0.00%	24	24.74%	0	0.00%
Maryland School for the Blind	180	0	0.00%	0	0.00%	0	0.00%	0	0.00%	165	91.67%	0	0.00%	0	0.00%
Maryland School for the Deaf	444	0	0.00%	0	0.00%	426	95.95%	0	0.00%	0	0.00%	0	0.00%	0	0.00%
Total State Operated Programs	901	13	1.44%	0	0.00%	426	47.28%	6	0.67%	165	18.31%	101	11.21%	0	0.00%

Table 2 (Continued)
 Students with Disabilities by Disability
 October 31, 2003
 Ages 3-21

	Other Health Impaired		Specific Learning Disabilities		Deaf/Blind		Multiple Disabilities		Autism		Traumatic Brain Injury		Developmental Delay	
	Total	Percent	Total	Percent	Total	Percent	Total	Percent	Total	Percent	Total	Percent	Total	Percent
Total State	11,055	9.72%	40,648	35.73%	28	0.02%	5,475	4.81%	4,084	3.59%	337	0.30%	3,752	3.30%
Allegany	154	9.34%	725	43.99%	0	0.00%	137	8.31%	16	0.97%	2	0.12%	48	2.91%
Anne Arundel	886	8.43%	4,050	38.53%	2	0.02%	731	6.95%	468	4.45%	31	0.29%	334	3.18%
Baltimore City	1,705	11.13%	4,728	30.88%	1	0.01%	131	0.86%	442	2.89%	57	0.37%	208	1.36%
Edison Schools	46	21.30%	58	26.85%	0	0.00%	3	1.39%	1	0.46%	2	0.93%	2	0.93%
Baltimore	1,388	9.91%	5,127	36.61%	1	0.01%	366	2.61%	637	4.55%	35	0.25%	737	5.26%
Calvert	211	8.89%	1,074	45.26%	0	0.00%	45	1.90%	108	4.55%	3	0.13%	23	0.97%
Caroline	6	0.85%	301	42.45%	0	0.00%	35	4.94%	20	2.82%	0	0.00%	0	0.00%
Carroll	368	9.94%	1,265	34.18%	1	0.03%	147	3.97%	92	2.49%	17	0.46%	68	1.84%
Cecil	196	7.67%	1,161	45.46%	0	0.00%	126	4.93%	47	1.84%	9	0.35%	55	2.15%
Charles	180	7.23%	754	30.29%	0	0.00%	65	2.61%	71	2.85%	15	0.60%	110	4.42%
Dorchester	15	2.63%	251	44.04%	0	0.00%	54	9.47%	9	1.58%	1	0.18%	7	1.23%
Frederick	616	12.94%	1,600	33.60%	1	0.02%	116	2.44%	235	4.93%	9	0.19%	70	1.47%
Garrett	15	2.05%	336	45.96%	0	0.00%	68	9.30%	3	0.41%	0	0.00%	0	0.00%
Harford	1,077	17.65%	2,210	36.21%	1	0.02%	215	3.52%	127	2.08%	26	0.43%	122	2.00%
Howard	668	13.18%	1,244	24.54%	1	0.02%	211	4.16%	361	7.12%	14	0.28%	271	5.35%
Kent	30	8.85%	167	49.26%	0	0.00%	7	2.06%	8	2.36%	0	0.00%	15	4.42%
Montgomery	1,558	8.99%	6,147	35.46%	2	0.01%	798	4.60%	684	3.95%	39	0.22%	438	2.53%
Prince George's	1,079	7.15%	5,308	35.16%	4	0.03%	1,767	11.70%	525	3.48%	48	0.32%	1,088	7.21%
Queen Anne's	58	5.59%	609	58.73%	0	0.00%	22	2.12%	18	1.74%	2	0.19%	60	5.79%
St. Mary's	159	7.16%	990	44.55%	0	0.00%	24	1.08%	53	2.39%	8	0.36%	42	1.89%
Somerset	15	4.18%	179	49.86%	0	0.00%	19	5.29%	11	3.06%	2	0.56%	9	2.51%
Talbot	27	5.90%	163	35.59%	0	0.00%	12	2.62%	13	2.84%	3	0.66%	0	0.00%
Washington	398	14.32%	1,124	40.43%	0	0.00%	108	3.88%	64	2.30%	7	0.25%	16	0.58%
Wicomico	126	7.36%	626	36.59%	1	0.06%	203	11.86%	52	3.04%	2	0.12%	29	1.69%
Worcester	54	7.06%	337	44.05%	0	0.00%	24	3.14%	19	2.48%	3	0.39%	0	0.00%
Total Local Education Agencies	11,035	9.78%	40,534	35.92%	15	0.01%	5,434	4.81%	4,084	3.62%	335	0.30%	3,752	3.32%
Department of Juvenile Services	20	11.11%	58	32.22%	0	0.00%	8	4.44%	0	0.00%	2	1.11%	0	0.00%
Carter Center	0	0.00%	3	33.33%	0	0.00%	0	0.00%	0	0.00%	1	11.11%	0	0.00%
Cheltenham Detention Facility	2	12.50%	1	6.25%	0	0.00%	0	0.00%	0	0.00%	0	0.00%	0	0.00%
Cumberland Youth Services Ctr.	7	28.00%	14	56.00%	0	0.00%	0	0.00%	0	0.00%	0	0.00%	0	0.00%
Hickey School	7	9.46%	24	32.43%	0	0.00%	2	2.70%	0	0.00%	1	1.35%	0	0.00%
Maryland Youth Residence Center	0	0.00%	7	87.50%	0	0.00%	0	0.00%	0	0.00%	0	0.00%	0	0.00%
Noyse Childrens Center	0	0.00%	1	9.09%	0	0.00%	4	36.36%	0	0.00%	0	0.00%	0	0.00%
Schaffer House	0	0.00%	0	0.00%	0	0.00%	0	0.00%	0	0.00%	0	0.00%	0	0.00%
Thomas JS Waxter Children's Ctr.	0	0.00%	0	0.00%	0	0.00%	1	9.09%	0	0.00%	0	0.00%	0	0.00%
Thomas O'Farrell	1	5.00%	7	35.00%	0	0.00%	0	0.00%	0	0.00%	0	0.00%	0	0.00%
Western Maryland Children's Detention Ctr.	3	60.00%	1	20.00%	0	0.00%	1	20.00%	0	0.00%	0	0.00%	0	0.00%
Adult Corrections	0	0.00%	56	57.73%	0	0.00%	13	13.40%	0	0.00%	0	0.00%	0	0.00%
Maryland School for the Blind	0	0.00%	0	0.00%	13	7.22%	2	1.11%	0	0.00%	0	0.00%	0	0.00%
Maryland School for the Deaf	0	0.00%	0	0.00%	0	0.00%	18	4.05%	0	0.00%	0	0.00%	0	0.00%
Total State Operated Programs	20	2.22%	114	12.65%	13	1.44%	41	4.55%	0	0.00%	2	0.22%	0	0.00%

Figure 1
Students with Disabilities by Disability
Ages 3-21
October 31, 2003

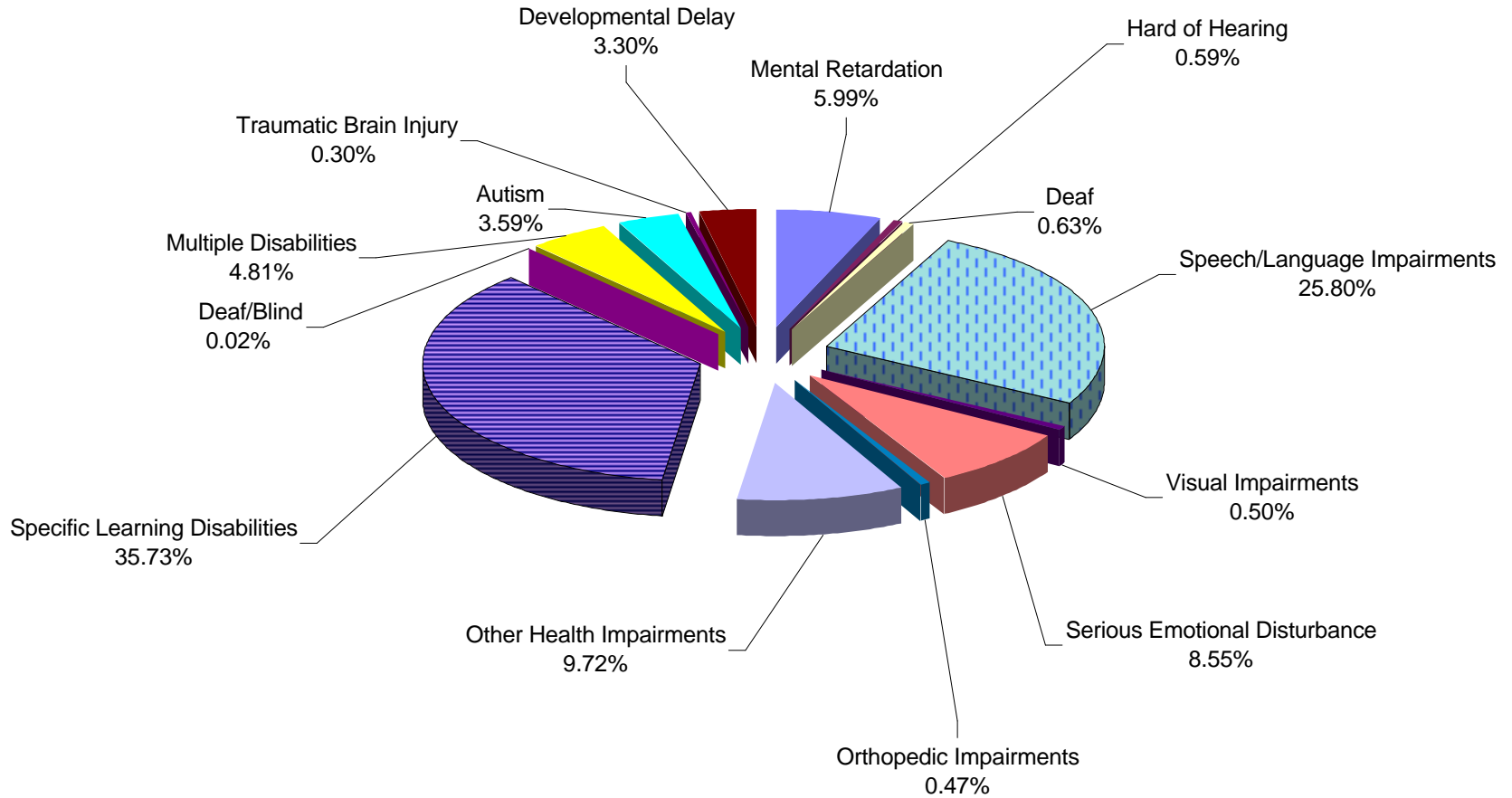


Table 3
 Students with Disabilities Trend in High Growth Disabilities
 Ages 3-21
 December 1, 1993 - October 31, 2003

	1993	1994	1995	1996	1997	1998	1999	2000	2001	2002	2003
Total State	94,999	96,779	100,863	104,630	109,084	111,688	111,711	112,078	112,426	113,128	113,760
Specific Learning Disabilities	43,007	44,816	43,482	43,958	45,189	45,927	45,459	44,379	43,345	41,860	40,648
Emotionally Impaired	5,669	5,638	6,737	7,172	7,724	8,358	8,714	9,145	9,301	9,537	9,727
Multiple Disabilities	5,404	5,352	5,385	5,691	6,264	6,635	6,503	6,437	6,028	5,735	5,475
Autism	280	422	697	999	1,282	1,594	1,886	2,304	2,823	3,488	4,084

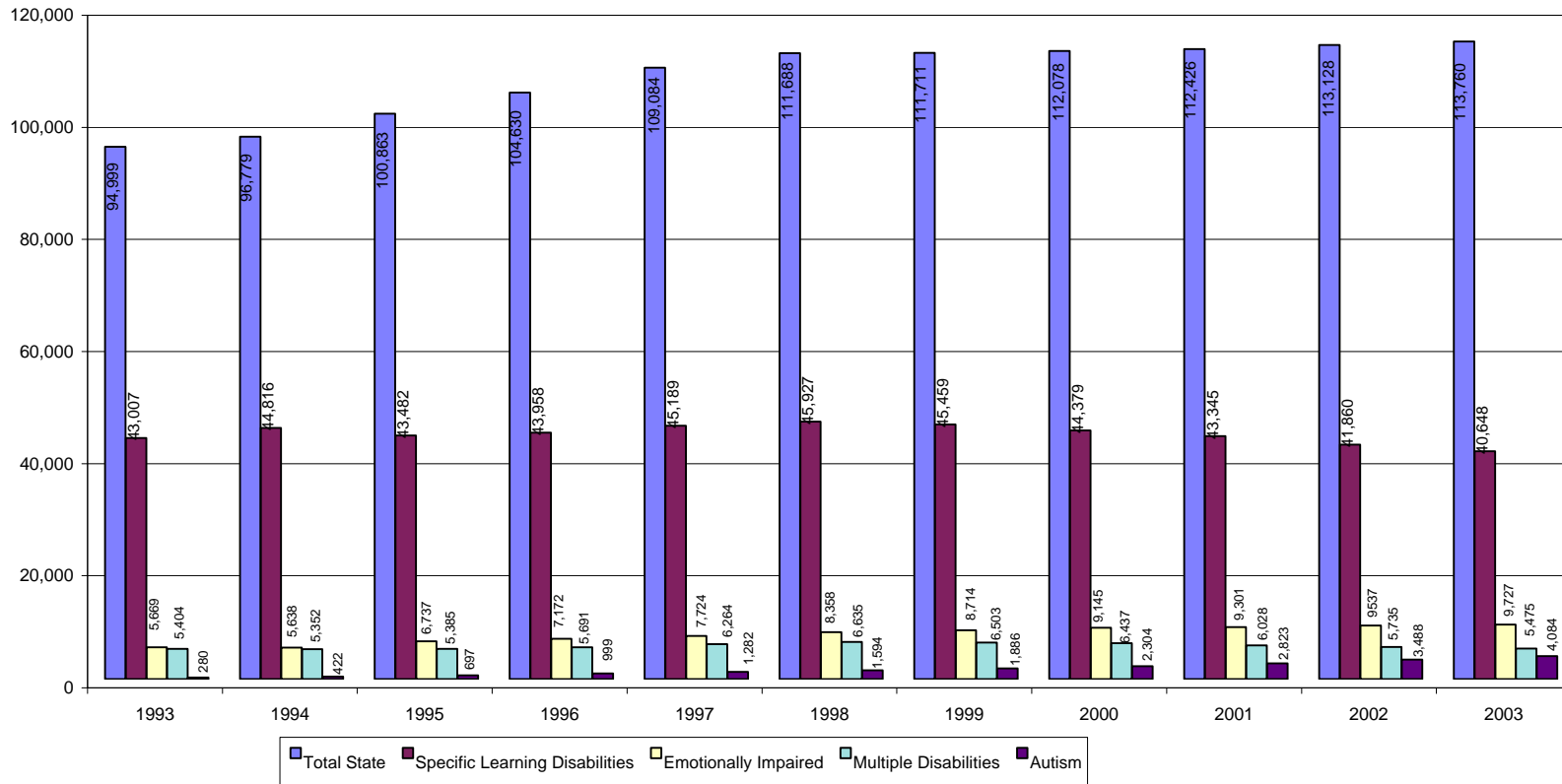


Figure 2
Students with Disabilities
Trend Data in High Growth Disabilities
Ages 3-21
1993-2003

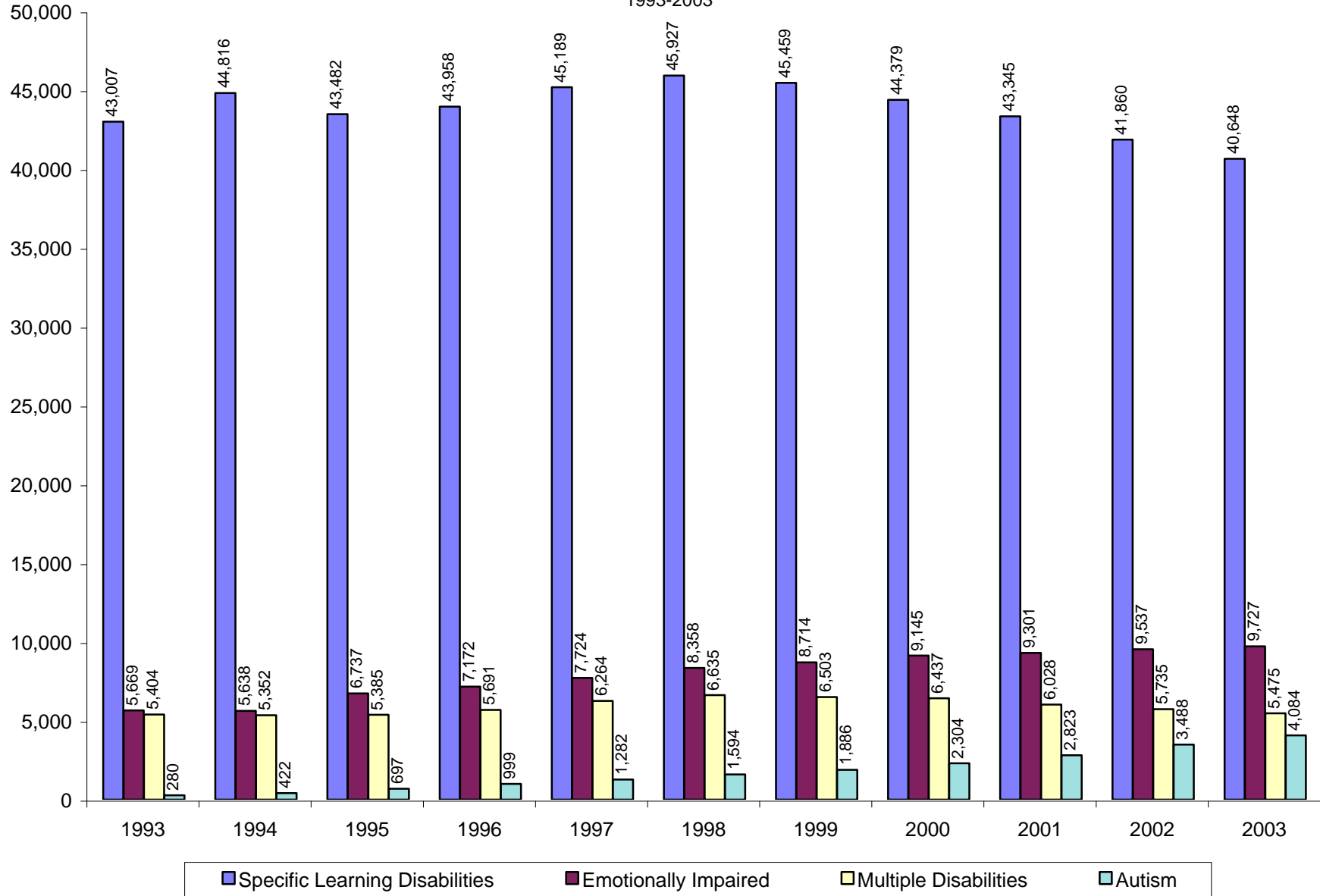


Table 4

Students with Disabilities by Age
October 31, 2003

	Total	Age																		
		3	4	5	6	7	8	9	10	11	12	13	14	15	16	17	18	19	20	21
Total State	113,760	2,898	4,024	5,176	5,701	6,260	7,247	8,284	9,009	9,203	9,648	9,723	9,414	8,948	7,936	6,247	2,451	855	644	92
Allegany	1,648	30	47	69	92	114	121	129	162	135	137	118	146	130	98	81	23	10	6	0
Anne Arundel	10,512	381	421	423	407	516	655	696	768	854	886	938	884	866	821	626	243	79	48	0
Baltimore City	15,313	288	433	634	714	718	829	1,044	1,185	1,297	1,506	1,524	1,407	1,274	1,029	764	360	166	125	16
Edison Schools Baltimore	216	2	5	11	16	22	31	31	37	38	20	3	0	0	0	0	0	0	0	0
	14,005	346	582	797	835	810	935	1,092	1,137	1,087	1,142	1,112	1,086	1,081	890	687	251	70	65	0
Calvert	2,373	45	76	94	132	143	168	153	173	199	211	225	205	191	165	126	48	12	7	0
Caroline	709	14	18	40	52	45	52	45	54	55	68	63	58	69	35	29	8	3	1	0
Carroll	3,701	104	111	214	204	192	226	259	275	307	313	303	300	317	263	211	64	15	20	3
Cecil	2,554	58	75	128	176	161	171	161	186	190	201	193	252	226	167	139	47	11	11	1
Charles	2,489	59	101	162	154	158	152	187	179	158	189	195	172	212	166	149	63	20	12	1
Dorchester	570	17	17	24	23	40	31	42	53	48	49	58	54	37	36	22	10	5	3	1
Frederick	4,762	124	129	177	232	313	375	419	397	422	405	376	372	359	342	222	65	17	14	2
Garrett	731	15	31	30	38	35	55	45	49	65	68	73	67	47	47	40	15	10	1	0
Harford	6,103	166	218	292	324	362	457	483	546	478	552	527	473	391	357	327	99	24	23	4
Howard	5,070	189	272	289	284	295	305	342	370	354	423	396	404	345	361	272	109	39	19	2
Kent	339	5	9	13	24	22	24	31	32	29	25	28	27	25	14	22	7	2	0	0
Montgomery	17,334	446	642	723	825	963	1,122	1,310	1,400	1,425	1,449	1,488	1,368	1,300	1,235	1,005	379	139	100	15
Prince George's	15,098	392	526	598	603	714	833	1,024	1,209	1,287	1,257	1,345	1,374	1,282	1,154	890	379	136	82	13
Queen Anne's	1,037	19	49	50	59	69	53	64	78	93	84	88	90	88	69	59	17	8	0	0
St. Mary's	2,222	56	81	116	153	138	180	213	189	171	166	168	127	144	139	107	51	17	5	1
Somerset	359	7	11	10	13	24	23	37	24	32	33	28	32	22	28	14	16	1	3	1
Talbot	458	21	19	23	31	23	40	34	29	24	31	35	32	36	32	31	9	4	3	1
Washington	2,780	46	61	127	157	193	189	209	207	200	199	234	233	240	223	169	62	12	16	3
Wicomico	1,711	37	46	66	90	113	141	150	173	141	115	110	122	129	106	95	53	10	13	1
Worcester	765	18	27	42	39	36	51	52	56	65	69	56	65	54	60	51	13	7	3	1
Total Local Education Agencies	112,859	2,885	4,007	5,152	5,677	6,219	7,219	8,252	8,968	9,154	9,598	9,684	9,350	8,865	7,837	6,138	2,391	817	580	66
Department of Juvenile Services	180	0	0	0	0	0	0	0	0	0	2	1	13	42	46	56	16	2	2	0
Adult Corrections	97	0	0	0	0	0	0	0	0	0	0	0	0	2	2	3	21	20	28	21
Maryland School for the Blind	180	6	3	1	5	13	7	5	8	9	10	5	12	14	13	20	10	12	24	3
Maryland School for the Deaf	444	7	14	23	19	28	21	27	33	40	38	33	39	25	38	30	13	4	10	2
Total State Operated Programs	901	13	17	24	24	41	28	32	41	49	50	39	64	83	99	109	60	38	64	26

Table 5
 Students with Disabilities by Age and Disability
 October 31, 2003

Age	Total	Mental Retardation	Hearing Impaired	Deaf	Speech/ Language	Visually Impaired	Emotion-ally Disturbed	Orthope-dically Impaired	Other Health Impaired	Specific Learning Disabilities	Deaf/ Blind	Multiple Disabilities	Autism	Traumatic Brain Injury	Develop-mental Delay
Total	113,760	6,814	666	715	29,349	573	9,727	537	11,055	40,648	28	5,475	4,084	337	3,752
3	2,898	17	18	21	1,555	18	0	30	54	2	3	77	104	4	995
4	4,024	25	28	26	2,329	20	4	38	65	8	1	74	178	6	1222
5	5,176	86	33	38	3,406	29	30	45	144	38	0	118	266	6	937
3-5	12,098	128	79	85	7,290	67	34	113	263	48	4	269	548	16	3,154
6	5,701	199	49	36	3,835	31	83	42	299	233	0	175	341	8	370
7	6,260	224	49	49	3,567	30	166	40	500	888	2	235	325	13	172
8	7,247	319	51	38	3,254	36	265	42	699	1,852	4	281	334	17	55
9	8,284	431	54	49	2,743	34	450	40	958	2,806	3	332	367	16	1
10	9,009	462	47	53	2,269	29	672	33	1,179	3,473	0	431	342	19	0
11	9,203	546	46	57	1,707	50	787	43	1,229	3,850	1	468	392	27	0
6-11	45,704	2,181	296	282	17,375	210	2,423	240	4,864	13,102	10	1,922	2,101	100	598
12	9,648	637	57	58	1,339	44	1,044	31	1,250	4,439	2	432	283	32	0
13	9,723	573	42	44	1,066	46	1,188	31	1,174	4,770	0	480	273	36	0
14	9,414	606	55	57	756	33	1,239	24	1,037	4,862	0	507	205	33	0
15	8,948	613	41	46	640	38	1,270	31	959	4,648	2	466	156	38	0
16	7,936	605	42	55	452	41	1,126	24	756	4,211	0	434	168	22	0
17	6,247	515	40	45	333	38	884	23	541	3,264	2	394	139	29	0
12-17	51,916	3,549	277	305	4,586	240	6,751	164	5,717	26,194	6	2,713	1,224	190	0
18	2,451	386	13	20	80	17	360	14	165	1,033	3	249	95	16	0
19	855	284	1	5	13	16	99	3	34	178	0	152	62	8	0
20	644	253	0	16	5	20	54	2	12	77	5	146	49	5	0
21	92	33	0	2	0	3	6	1	0	16	0	24	5	2	0
18-21	4,042	956	14	43	98	56	519	20	211	1,304	8	571	211	31	0

Table 6
 Students with Disabilities by Grade
 Grades 1 - 6, Prek, and Kindergarten
 October 31, 2003

	Grand Total	Kinder- garten		Pre- school		1		2		3		4		5		6	
		Total	Percent	Total	Percent	Total	Percent	Total	Percent	Total	Percent	Total	Percent	Total	Percent	Total	Percent
Total State	113,760	5,236	4.60%	6,998	6.15%	6,229	5.48%	6,625	5.82%	7,540	6.63%	8,509	7.48%	8,948	7.87%	9,618	8.45%
Allegany	1,648	61	3.70%	76	4.61%	98	5.95%	121	7.34%	120	7.28%	144	8.74%	146	8.86%	133	8.07%
Anne Arundel	10,512	405	3.85%	843	8.02%	452	4.30%	529	5.03%	626	5.96%	692	6.58%	810	7.71%	844	8.03%
Baltimore City	15,313	546	3.57%	834	5.45%	942	6.15%	882	5.76%	1,028	6.71%	1,201	7.84%	1,197	7.82%	1,562	10.20%
Edison Schools	216	9	4.17%	5	2.31%	21	9.72%	18	8.33%	35	16.20%	39	18.06%	40	18.52%	46	21.30%
Baltimore	14,005	818	5.84%	902	6.44%	858	6.13%	853	6.09%	981	7.00%	1,134	8.10%	1,202	8.58%	1,094	7.81%
Calvert	2,373	123	5.18%	135	5.69%	177	7.46%	154	6.49%	162	6.83%	167	7.04%	124	5.23%	259	10.91%
Caroline	709	38	5.36%	34	4.80%	61	8.60%	55	7.76%	43	6.06%	47	6.63%	65	9.17%	52	7.33%
Carroll	3,701	263	7.11%	156	4.22%	203	5.49%	201	5.43%	217	5.86%	234	6.32%	251	6.78%	293	7.92%
Cecil	2,554	117	4.58%	127	4.97%	209	8.18%	169	6.62%	170	6.66%	181	7.09%	208	8.14%	183	7.17%
Charles	2,489	127	5.10%	187	7.51%	182	7.31%	175	7.03%	155	6.23%	203	8.16%	167	6.71%	198	7.96%
Dorchester	570	26	4.56%	32	5.61%	31	5.44%	34	5.96%	34	5.96%	37	6.49%	58	10.18%	49	8.60%
Frederick	4,762	180	3.78%	277	5.82%	249	5.23%	320	6.72%	404	8.48%	414	8.69%	400	8.40%	424	8.90%
Garrett	731	41	5.61%	65	8.89%	33	4.51%	51	6.98%	51	6.98%	46	6.29%	80	10.94%	66	9.03%
Harford	6,103	264	4.33%	455	7.46%	342	5.60%	420	6.88%	490	8.03%	476	7.80%	459	7.52%	559	9.16%
Howard	5,070	354	6.98%	415	8.19%	295	5.82%	296	5.84%	309	6.09%	345	6.80%	376	7.42%	368	7.26%
Kent	339	13	3.83%	14	4.13%	24	7.08%	24	7.08%	24	7.08%	32	9.44%	36	10.62%	25	7.37%
Montgomery	17,334	735	4.24%	1,027	5.92%	890	5.13%	1,009	5.82%	1,138	6.57%	1,296	7.48%	1,439	8.30%	1,450	8.37%
Prince George's	15,098	647	4.29%	896	5.93%	524	3.47%	682	4.52%	817	5.41%	1,055	6.99%	1,096	7.26%	1,254	8.31%
Queen Anne's	1,037	58	5.59%	66	6.36%	57	5.50%	67	6.46%	59	5.69%	63	6.08%	84	8.10%	98	9.45%
St. Mary's	2,222	116	5.22%	132	5.94%	165	7.43%	145	6.53%	193	8.69%	212	9.54%	193	8.69%	177	7.97%
Somerset	359	11	3.06%	18	5.01%	15	4.18%	21	5.85%	36	10.03%	29	8.08%	31	8.64%	34	9.47%
Talbot	458	26	5.68%	38	8.30%	28	6.11%	29	6.33%	42	9.17%	32	6.99%	32	6.99%	33	7.21%
Washington	2,780	122	4.39%	119	4.28%	175	6.29%	214	7.70%	180	6.47%	194	6.98%	203	7.30%	186	6.69%
Wicomico	1,711	82	4.79%	70	4.09%	145	8.47%	96	5.61%	152	8.88%	170	9.94%	168	9.82%	135	7.89%
Worcester	765	38	4.97%	47	6.14%	40	5.23%	45	5.88%	56	7.32%	45	5.88%	52	6.80%	67	8.76%
Total Local Education Agencies	112,859	5,220	4.63%	6,970	6.18%	6,216	5.51%	6,610	5.86%	7,522	6.66%	8,488	7.52%	8,917	7.90%	9,589	8.50%
Department of Juvenile Services	180	0	0.00%	0	0.00%	0	0.00%	0	0.00%	0	0.00%	0	0.00%	0	0.00%	2	1.11%
Adult Corrections	97	0	0.00%	0	0.00%	0	0.00%	0	0.00%	0	0.00%	0	0.00%	0	0.00%	0	0.00%
Maryland School for the Blind	180	7	3.89%	13	7.22%	2	1.11%	2	1.11%	5	2.78%	3	1.67%	1	0.56%	8	4.44%
Maryland School for the Deaf	444	9	2.03%	15	3.38%	11	2.48%	13	2.93%	13	2.93%	18	4.05%	30	6.76%	19	4.28%
Total State Operated Programs	901	16	1.78%	28	3.11%	13	1.44%	15	1.66%	18	2.00%	21	2.33%	31	3.44%	29	3.22%

Table 6 (continued)
 Students with Disabilities by Grade
 Grades 7 - 12 & Ungraded
 October 31, 2003

													Ungraded			
	7		8		9		10		11		12		Elementary		Secondary	
	Total	Percent	Total	Percent	Total	Percent	Total	Percent	Total	Percent	Total	Percent	Total	Percent	Total	Percent
Total State	9,396	8.26%	9,215	8.10%	10,885	9.57%	8,049	7.08%	6,660	5.85%	6,291	5.53%	1,408	1.24%	2,153	1.89%
Allegany	142	8.62%	124	7.52%	141	8.56%	141	8.56%	92	5.58%	81	4.92%	0	0.00%	28	1.70%
Anne Arundel	779	7.41%	842	8.01%	1,039	9.88%	734	6.98%	669	6.36%	519	4.94%	289	2.75%	440	4.19%
Baltimore City	1,552	10.14%	1,240	8.10%	1,853	12.10%	914	5.97%	733	4.79%	829	5.41%	0	0.00%	0	0.00%
Edison Schools	2	0.93%	0	0.00%	0	0.00%	0	0.00%	0	0.00%	0	0.00%	1	0.46%	0	0.00%
Baltimore	1,127	8.05%	1,080	7.71%	1,186	8.47%	969	6.92%	764	5.46%	744	5.31%	108	0.77%	185	1.32%
Calvert	225	9.48%	160	6.74%	224	9.44%	153	6.45%	107	4.51%	81	3.41%	39	1.64%	83	3.50%
Caroline	69	9.73%	60	8.46%	77	10.86%	47	6.63%	31	4.37%	28	3.95%	2	0.28%	0	0.00%
Carroll	291	7.86%	262	7.08%	308	8.32%	258	6.97%	213	5.76%	203	5.49%	127	3.43%	221	5.97%
Cecil	204	7.99%	222	8.69%	270	10.57%	172	6.73%	163	6.38%	159	6.23%	0	0.00%	0	0.00%
Charles	168	6.75%	198	7.96%	221	8.88%	187	7.51%	165	6.63%	152	6.11%	0	0.00%	4	0.16%
Dorchester	59	10.35%	64	11.23%	56	9.82%	42	7.37%	24	4.21%	17	2.98%	0	0.00%	7	1.23%
Frederick	409	8.59%	381	8.00%	438	9.20%	322	6.76%	284	5.96%	260	5.46%	0	0.00%	0	0.00%
Garrett	65	8.89%	82	11.22%	27	3.69%	42	5.75%	33	4.51%	27	3.69%	0	0.00%	22	3.01%
Harford	465	7.62%	619	10.14%	472	7.73%	343	5.62%	296	4.85%	261	4.28%	62	1.02%	120	1.97%
Howard	408	8.05%	400	7.89%	448	8.84%	378	7.46%	350	6.90%	328	6.47%	0	0.00%	0	0.00%
Kent	28	8.26%	28	8.26%	32	9.44%	25	7.37%	24	7.08%	10	2.95%	0	0.00%	0	0.00%
Montgomery	1,459	8.42%	1,456	8.40%	1,595	9.20%	1,373	7.92%	1,163	6.71%	1,304	7.52%	0	0.00%	0	0.00%
Prince George's	1,181	7.82%	1,260	8.35%	1,595	10.56%	1,211	8.02%	935	6.19%	778	5.15%	578	3.83%	589	3.90%
Queen Anne's	85	8.20%	88	8.49%	111	10.70%	84	8.10%	56	5.40%	61	5.88%	0	0.00%	0	0.00%
St. Mary's	172	7.74%	157	7.07%	181	8.15%	152	6.84%	130	5.85%	96	4.32%	0	0.00%	1	0.05%
Somerset	37	10.31%	25	6.96%	32	8.91%	24	6.69%	12	3.34%	25	6.96%	4	1.11%	5	1.39%
Talbot	45	9.83%	24	5.24%	55	12.01%	32	6.99%	23	5.02%	16	3.49%	0	0.00%	3	0.66%
Washington	203	7.30%	214	7.70%	217	7.81%	220	7.91%	188	6.76%	131	4.71%	44	1.58%	170	6.12%
Wicomico	122	7.13%	106	6.20%	132	7.71%	98	5.73%	82	4.79%	74	4.32%	0	0.00%	79	4.62%
Worcester	64	8.37%	59	7.71%	62	8.10%	54	7.06%	50	6.54%	61	7.97%	9	1.18%	16	2.09%
Total Local Education Agencies	9,361	8.29%	9,151	8.11%	10,772	9.54%	7,975	7.07%	6,587	5.84%	6,245	5.53%	1,263	1.12%	1,973	1.75%
Department of Juvenile Services	7	3.89%	28	15.56%	74	41.11%	41	22.78%	22	12.22%	4	2.22%	0	0.00%	2	1.11%
Adult Corrections	0	0.00%	0	0.00%	0	0.00%	0	0.00%	0	0.00%	0	0.00%	0	0.00%	97	100.00%
Maryland School for the Blind	3	1.67%	6	3.33%	3	1.67%	8	4.44%	4	2.22%	2	1.11%	32	17.78%	81	45.00%
Maryland School for the Deaf	25	5.63%	30	6.76%	36	8.11%	25	5.63%	47	10.59%	40	9.01%	113	25.45%	0	0.00%
Total State Operated Programs	35	3.88%	64	7.10%	113	12.54%	74	8.21%	73	8.10%	46	5.11%	145	16.09%	180	19.98%

Table 7
Students with Disabilities by Grade and Disability

October 31, 2003

	Grand		Mental Retardation		Hearing Impaired		Deaf		Speech/ Language		Visually Impaired		Emotion-ally Disturbed		Orthope-dically Impaired	
	Total	Percent	Total	Percent	Total	Percent	Total	Percent	Total	Percent	Total	Percent	Total	Percent	Total	Percent
Total	113,760		6,814	6.06%	666	0.59%	715	0.64%	29,349	26.11%	573	0.51%	9,727	8.65%	537	0.48%
Kindergarten	5,236	4.60%	77	1.64%	29	0.62%	29	0.62%	3,458	73.64%	34	0.72%	23	0.49%	38	0.81%
Preschool	6,998	6.15%	65	1.04%	50	0.80%	41	0.65%	3,863	61.71%	42	0.67%	23	0.37%	81	1.29%
Grade 1	6,229	5.48%	195	3.37%	47	0.81%	33	0.57%	4,171	72.05%	28	0.48%	91	1.57%	48	0.83%
Grade 2	6,625	5.82%	253	3.86%	60	0.92%	35	0.53%	3,652	55.76%	27	0.41%	194	2.96%	41	0.63%
Grade 3	7,540	6.63%	314	4.20%	51	0.68%	31	0.41%	3,166	42.36%	32	0.43%	329	4.40%	39	0.52%
Grade 4	8,509	7.48%	422	4.70%	50	0.56%	43	0.48%	2,700	30.06%	33	0.37%	518	5.77%	41	0.46%
Grade 5	8,948	7.87%	466	4.89%	51	0.54%	51	0.54%	2,189	22.98%	26	0.27%	680	7.14%	36	0.38%
Grade 6	9,618	8.45%	547	5.61%	49	0.50%	43	0.44%	1,726	17.70%	45	0.46%	921	9.44%	36	0.37%
Grade 7	9,396	8.26%	568	5.77%	55	0.56%	42	0.43%	1,232	12.52%	34	0.35%	1,102	11.20%	28	0.28%
Grade 8	9,215	8.10%	516	5.72%	40	0.44%	42	0.47%	962	10.66%	42	0.47%	1,142	12.66%	27	0.30%
Grade 9	10,885	9.57%	707	6.86%	59	0.57%	59	0.57%	836	8.11%	30	0.29%	1,542	14.95%	24	0.23%
Grade 10	8,049	7.08%	516	6.55%	39	0.49%	45	0.57%	577	7.32%	37	0.47%	1,116	14.16%	24	0.30%
Grade 11	6,660	5.85%	540	8.57%	45	0.71%	64	1.02%	381	6.04%	28	0.44%	930	14.75%	31	0.49%
Grade 12	6,291	5.53%	739	13.28%	36	0.65%	60	1.08%	321	5.77%	29	0.52%	767	13.79%	31	0.56%
Ungraded Elementary	1,408	1.24%	252	12.96%	1	0.05%	95	4.88%	72	3.70%	35	1.80%	65	3.34%	8	0.41%
Ungraded Secondary	2,153	1.89%	637	25.43%	4	0.16%	2	0.08%	43	1.72%	71	2.83%	284	11.34%	4	0.16%

Table 7 continued

Students with Disabilities by Grade and Disability

October 31, 2003

	Other Health Impaired		Specific Learning Disabilities		Multiple Disabilities		Deaf/Blind		Autism		Traumatic Brain Injury		Developmental Delay	
	Total	Percent	Total	Percent	Total	Percent	Total	Percent	Total	Percent	Total	Percent	Total	Percent
Total	11,055	9.84%	40,648	36.17%	5,475	4.87%	28	0.02%	4,084	3.63%	337	0.30%	3,752	3.34%
Kindergarten	144	3.07%	57	1.21%	100	2.13%	0	0.00%	277	5.90%	7	0.15%	963	20.51%
Preschool	132	2.11%	11	0.18%	147	2.35%	4	0.06%	295	4.71%	8	0.13%	2,236	35.72%
Grade 1	387	6.69%	433	7.48%	133	2.30%	0	0.00%	315	5.44%	12	0.21%	336	5.80%
Grade 2	517	7.89%	1,158	17.68%	199	3.04%	1	0.02%	337	5.15%	7	0.11%	144	2.20%
Grade 3	803	10.74%	2,175	29.10%	233	3.12%	2	0.03%	298	3.99%	20	0.27%	47	0.63%
Grade 4	1,012	11.27%	2,997	33.37%	331	3.69%	1	0.01%	343	3.82%	17	0.19%	1	0.01%
Grade 5	1,207	12.67%	3,522	36.97%	359	3.77%	0	0.00%	334	3.51%	27	0.28%	0	0.00%
Grade 6	1,253	12.85%	4,237	43.45%	394	4.04%	1	0.01%	336	3.45%	30	0.31%	0	0.00%
Grade 7	1,177	11.96%	4,542	46.15%	350	3.56%	1	0.01%	247	2.51%	18	0.18%	0	0.00%
Grade 8	1,167	12.93%	4,597	50.95%	436	4.83%	0	0.00%	211	2.34%	33	0.37%	0	0.00%
Grade 9	1,184	11.48%	5,777	56.03%	451	4.37%	0	0.00%	173	1.68%	43	0.42%	0	0.00%
Grade 10	824	10.46%	4,326	54.90%	369	4.68%	0	0.00%	151	1.92%	25	0.32%	0	0.00%
Grade 11	620	9.84%	3,483	55.25%	357	5.66%	1	0.02%	150	2.38%	30	0.48%	0	0.00%
Grade 12	510	9.17%	3,089	55.53%	439	7.89%	2	0.04%	236	4.24%	30	0.54%	2	0.04%
Ungraded Elementary	42	2.16%	50	2.57%	521	26.79%	6	0.31%	227	11.67%	11	0.57%	23	1.18%
Ungraded Secondary	76	3.03%	194	7.74%	656	26.19%	9	0.36%	154	6.15%	19	0.76%	0	0.00%

Table 8
Students with Disabilities by Gender
Ages 3-21
October 31, 2003

	Grand Total	Male		Female	
		Total	Percent	Total	Percent
Total State	113,760	77,966	68.5%	35,786	31.5%
Allegany	1,648	1,087	66.0	561	34.0
Anne Arundel	10,512	7,176	68.3	3,336	31.7
Baltimore City	15,313	10,612	69.3	4,701	30.7
Edison Schools	216	155	71.8	61	28.2
Baltimore	14,005	9,624	68.7	4,381	31.3
Calvert	2,373	1,593	67.1	780	32.9
Caroline	709	463	65.3	246	34.7
Carroll	3,701	2,571	69.5	1,130	30.5
Cecil	2,554	1,745	68.3	809	31.7
Charles	2,489	1,744	70.1	745	29.9
Dorchester	570	376	66.0	194	34.0
Frederick	4,762	3,283	68.9	1,479	31.1
Garrett	731	499	68.3	232	31.7
Harford	6,103	4,129	67.7	1,974	32.3
Howard	5,070	3,492	68.9	1,578	31.1
Kent	339	232	68.4	107	31.6
Montgomery	17,334	11,795	68.0	5,539	32.0
Prince George's	15,098	10,445	69.2	4,653	30.8
Queen Anne's	1,037	729	70.3	308	29.7
St. Mary's	2,222	1,506	67.8	716	32.2
Somerset	359	239	66.6	120	33.4
Talbot	458	327	71.4	131	28.6
Washington	2,780	1,857	66.8	923	33.2
Wicomico	1,711	1,170	68.4	541	31.6
Worcester	765	522	68.2	243	31.8
Total Local Education Agencies	112,859	77,371	68.6	35,488	31.4
Department of Juvenile Services	180	168	93.3	12	6.7
Carter Center	9	8	88.9	1	11.1
Cheltenham Detention Center	16	16	100.0	0	0.0
Cumberland Youth Services Ctr.	25	25	100.0	0	0.0
Hickey	74	74	100.0	0	0.0
Maryland Youth Residence Center	8	8	100.0	0	0.0
Noyse Children's Center	11	11	100.0	0	0.0
Schaffer House	1	1	100.0	0	0.0
Thomas JS Waxter Children's Ctr.	11	0	0.0	11	100.0
Thomas O'Farrell	20	20	100.0	0	0.0
Western Maryland Children's Detention Ctr.	5	5	100.0	0	0.0
Adult Corrections	97	96	99.0	1	1.0
Maryland School for the Blind	180	102	56.7	78	43.3
Maryland School for the Deaf	444	237	53.4	207	46.6
Total State Operated Programs	901	595	66.0	298	33.1

Table 9
 Students with Disabilities by Race
 October 31, 2003
 Ages 3-21

	Grand Total	American Indian/ Alaskan Native		Asian/ Pacific Islander		African American		White		Hispanic	
		Total	Percent	Total	Percent	Total	Percent	Total	Percent	Total	Percent
Total State	113,760	448	0.4%	2,328	2.0%	45,681	40.2%	59,191	52.0%	6,112	5.4%
Allegany	1,648	11	0.7	1	0.1	76	4.6	1,556	94.4	4	0.2
Anne Arundel	10,512	35	0.3	138	1.3	2,527	24.0	7,532	71.7	280	2.7
Baltimore City	15,313	44	0.3	50	0.3	13,193	86.2	1,913	12.5	113	0.7
Edison Schools	216	0	0.0	0	0.0	215	99.5	1	0.5	0	0.0
Baltimore	14,005	88	0.6	229	1.6	5,097	36.4	8,345	59.6	246	1.8
Calvert	2,373	9	0.4	16	0.7	558	23.5	1,766	74.4	24	1.0
Caroline	709	0	0.0	0	0.0	188	26.5	508	71.7	13	1.8
Carroll	3,701	10	0.3	34	0.9	160	4.3	3,456	93.4	41	1.1
Cecil	2,554	4	0.2	8	0.3	180	7.0	2,313	90.6	49	1.9
Charles	2,489	31	1.2	35	1.4	1,116	44.8	1,260	50.6	47	1.9
Dorchester	570	2	0.4	2	0.4	288	50.5	269	47.2	9	1.6
Frederick	4,762	13	0.3	70	1.5	616	12.9	3,889	81.7	174	3.7
Garrett	731	1	0.1	1	0.1	1	0.1	728	99.6	0	0.0
Harford	6,103	14	0.2	82	1.3	1,034	16.9	4,857	79.6	116	1.9
Howard	5,070	13	0.3	254	5.0	1,230	24.3	3,407	67.2	166	3.3
Kent	339	2	0.6	0	0.0	116	34.2	213	62.8	8	2.4
Montgomery	17,334	59	0.3	1,093	6.3	4,670	26.9	8,109	46.8	3,403	19.6
Prince George's	15,098	79	0.5	242	1.6	11,835	78.4	1,701	11.3	1,241	8.2
Queen Anne's	1,037	2	0.2	6	0.6	147	14.2	875	84.4	7	0.7
St. Mary's	2,222	14	0.6	20	0.9	516	23.2	1,637	73.7	35	1.6
Somerset	359	1	0.3	1	0.3	157	43.7	193	53.8	7	1.9
Talbot	458	2	0.4	3	0.7	146	31.9	288	62.9	19	4.1
Washington	2,780	8	0.3	10	0.4	246	8.8	2,468	88.8	48	1.7
Wicomico	1,711	0	0.0	17	1.0	712	41.6	950	55.5	32	1.9
Worcester	765	0	0.0	2	0.3	270	35.3	482	63.0	11	1.4
Total Local Education Agencies	112,859	442	0.4	2,314	2.1	45,294	40.1	58,716	52.0	6,093	5.4
Department of Juvenile Services	180	5	2.8	0	0.0	134	74.4	39	21.7	2	1.1
Carter Center	9	0	0.0	0	0.0	4	44.4	5	55.6	0	0.0
Cheltenham Detention Center	16	0	0.0	0	0.0	16	100.0	0	0.0	0	0.0
Cumberland Youth Services Ctr.	25	0	0.0	0	0.0	15	60.0	9	36.0	1	4.0
Hickey School	74	1	1.4	0	0.0	64	86.5	8	10.8	1	1.4
Maryland Youth Residence Center	8	0	0.0	0	0.0	7	87.5	1	12.5	0	0.0
Noyse Children's Center	11	4	36.4	0	0.0	2	18.2	5	45.5	0	0.0
Schaffer House	1	0	0.0	0	0.0	1	100.0	0	0.0	0	0.0
Thomas JS Waxter Children's Ctr.	11	0	0.0	0	0.0	8	72.7	3	27.3	0	0.0
Thomas O'Farrell	20	0	0.0	0	0.0	16	80.0	4	20.0	0	0.0
Western Maryland Children's Detention Ctr.	5	0	0.0	0	0.0	1	20.0	4	80.0	0	0.0
Adult Corrections	97	0	0.0	0	0.0	89	91.8	8	8.2	0	0.0
Maryland School for the Blind	180	1	0.6	3	1.7	73	40.6	99	55.0	4	2.2
Maryland School for the Deaf	444	0	0.0	11	2.5	91	20.5	329	74.1	13	2.9
Total State Operated Programs	901	6	0.7	14	1.6	387	43.0	475	52.7	19	2.1

Table10
 Students with Disabilities by Race
 Compared with General Education Students by Race
 Ages 3-21
 October 31, 2003

	Grand Total	American Indian/ Alaskan Native		Asian/ Pacific Islander		African American		White		Hispanic	
		Total	Percent	Total	Percent	Total	Percent	Total	Percent	Total	Percent
Total SWD	112,859	442	0.7%	2,314	3.9%	45,294	76.0%	58,716	98.5%	6,093	10.2%
Total General Education	869,113	3,372	0.8%	42,215	9.8%	329,526	76.8%	438,450	102.1%	55,550	12.9%
Allegany SWD	1,648	11	0.7	1	0.1	76	4.6	1,556	94.4	4	0.2
General Education	9,926	23	0.2	67	0.7	433	4.4	9,360	94.3	43	0.4
Anne Arundel SWD	10,512	35	0.3	138	1.3	2,527	24.0	7,532	71.7	280	2.7
General Education	74,508	240	0.3	2,289	3.1	15,602	20.9	53,823	72.2	2,554	3.4
Baltimore City SWD	15,313	44	0.3	50	0.3	13,193	86.2	1,913	12.5	113	0.7
General Education	91,738	264	0.3	574	0.6	81,034	88.3	8,575	9.3	1,291	1.4
Edison Schools SWD	216	0	0.0	0	0.0	215	99.5	1	0.5	0	0.0
General Education	2,311	0	0.0	0	0.0	2,299	99.5	5	0.2	7	0.3
Baltimore SWD	14,005	88	0.6	229	1.6	5,097	36.4	8,345	59.6	246	1.8
General Education	108,523	541	0.5	4,690	4.3	39,804	36.7	60,729	56.0	2,759	2.5
Calvert SWD	2,373	9	0.4	16	0.7	558	23.5	1,766	74.4	24	1.0
General Education	17,423	36	0.2	202	1.2	2,742	15.7	14,230	81.7	213	1.2
Caroline SWD	709	0	0.0	0	0.0	188	26.5	508	71.7	13	1.8
General Education	5,400	15	0.3	51	0.9	1,056	19.6	4,115	76.2	163	3.0
Carroll SWD	3,701	10	0.3	34	0.9	160	4.3	3,456	93.4	41	1.1
General Education	28,832	75	0.3	365	1.3	795	2.8	27,218	94.4	379	1.3
Cecil SWD	2,554	4	0.2	8	0.3	180	7.0	2,313	90.6	49	1.9
General Education	16,475	46	0.3	134	0.8	1,243	7.5	14,667	89.0	385	2.3
Charles SWD	2,489	31	1.2	35	1.4	1,116	44.8	1,260	50.6	47	1.9
General Education	25,610	238	0.9	705	2.8	10,521	41.1	13,464	52.6	682	2.7
Dorchester SWD	570	2	0.4	2	0.4	288	50.5	269	47.2	9	1.6
General Education	4,803	13	0.3	56	1.2	1,989	41.4	2,643	55.0	102	2.1
Frederick SWD	4,762	13	0.3	70	1.5	616	12.9	3,889	81.7	174	3.7
General Education	38,950	113	0.3	1,145	2.9	3,853	9.9	32,243	82.8	1,596	4.1
Garrett SWD	731	1	0.1	1	0.1	1	0.1	728	99.6	0	0.0
General Education	4,810	0	0.0	9	0.2	12	0.2	4,782	99.4	7	0.1

*General education number includes students with disabilities.

Table 10 continued
 Students with Disabilities by Race
 Compared with General Education Students by Race
 Ages 3-21
 October 31, 2003

	Grand Total	American Indian/ Alaskan Native		Asian/ Pacific Islander		African American		White		Hispanic	
		Total	Percent	Total	Percent	Total	Percent	Total	Percent	Total	Percent
Harford SWD	6,103	14	0.2	82	1.3	1,034	16.9	4,857	79.6	116	1.9
General Education	40,200	215	0.5	925	2.3	6,571	16.3	31,402	78.1	1,087	2.7
Howard SWD	5,070	13	0.3	254	5.0	1,230	24.3	3,407	67.2	166	3.3
General Education	47,833	108	0.2	5,662	11.8	8,819	18.4	31,505	65.9	1,739	3.6
Kent SWD	339	2	0.6	0	0.0	116	34.2	213	62.8	8	2.4
General Education	2,565	9	0.4	14	0.5	655	25.5	1,787	69.7	100	3.9
Montgomery SWD	17,334	59	0.3	1,093	6.3	4,670	26.9	8,109	46.8	3,403	19.6
General Education	139,201	428	0.3	19,910	14.3	30,735	22.1	62,069	44.6	26,059	18.7
Prince George's SWD	15,098	79	0.5	242	1.6	11,835	78.4	1,701	11.3	1,241	8.2
General Education	137,285	782	0.6	4,196	3.1	106,480	77.6	11,045	8.0	14,782	10.8
Queen Anne's SWD	1,037	2	0.2	6	0.6	147	14.2	875	84.4	7	0.7
General Education	7,526	23	0.3	60	0.8	689	9.2	6,674	88.7	80	1.1
St. Mary's SWD	2,222	14	0.6	20	0.9	516	23.2	1,637	73.7	35	1.6
General Education	16,261	103	0.6	342	2.1	3,028	18.6	12,440	76.5	348	2.1
Somerset SWD	359	1	0.3	1	0.3	157	43.7	193	53.8	7	1.9
General Education	2,951	1	0.0	26	0.9	1,342	45.5	1,500	50.8	82	2.8
Talbot SWD	458	2	0.4	3	0.7	146	31.9	288	62.9	19	4.1
General Education	4,459	10	0.2	78	1.7	990	22.2	3,239	72.6	142	3.2
Washington SWD	2,780	8	0.3	10	0.4	246	8.8	2,468	88.8	48	1.7
General Education	20,338	45	0.2	229	1.1	1,939	9.5	17,719	87.1	406	2.0
Wicomico SWD	1,711	0	0.0	17	1.0	712	41.6	950	55.5	32	1.9
General Education	14,402	25	0.2	427	3.0	5,196	36.1	8,355	58.0	399	2.8
Worcester SWD	765	0	0.0	2	0.3	270	35.3	482	63.0	11	1.4
General Education	6,783	19	0.3	59	0.9	1,699	25.0	4,861	71.7	145	2.1

*General education number includes students with disabilities.

Table 11
 Students with Disabilities by Race and Disability
 Ages 3-21
 October 31, 2003

Race	Grand Total	Mental Retardation		Hearing Impaired		Deaf		Speech/ Language		Visually Impaired		Emotion-ally Disturbed		Orthope-dically Impaired	
		Total	Percent	Total	Percent	Total	Percent	Total	Percent	Total	Percent	Total	Percent	Total	Percent
Total State	113,760	6,814	100.00%	666	100.00%	715	100.00%	29,349	100.00%	573	100.00%	9,727	100.00%	537	100.00%
American Indian	448	24	0.35%	2	0.30%	1	0.14%	105	0.36%	2	0.35%	49	0.50%	2	0.37%
Asian	2,328	131	1.92%	35	5.26%	32	4.48%	926	3.16%	23	4.01%	60	0.62%	16	2.98%
African American	45,681	4,118	60.43%	247	37.09%	169	23.64%	9,521	32.44%	234	40.84%	5,090	52.33%	237	44.13%
White	59,191	2,316	33.99%	344	51.65%	468	65.45%	16,864	57.46%	293	51.13%	4,297	44.18%	252	46.93%
Hispanic	6,112	225	3.30%	38	5.71%	45	6.29%	1,933	6.59%	21	3.66%	231	2.37%	30	5.59%

Table 11 continued
 Students with Disabilities by Race and Disability
 Ages 3-21
 October 31, 2003

Race	Health Impaired		Learning Disabilities		Multiple Disabilities		Deaf/ Blind		Autism		Traumatic Brain Injury		Develop-mental Delay	
	Total	Percent	Total	Percent	Total	Percent	Total	Percent	Total	Percent	Total	Percent	Total	Percent
Total State	11,055	100.00%	40,648	100.00%	5,475	100.00%	28	100.00%	4,084	100.00%	337	100.00%	3,752	100.00%
American Indian	50	0.45%	156	0.38%	24	0.44%	0	0.00%	14	0.34%	2	0.59%	17	0.45%
Asian	142	1.28%	454	1.12%	161	2.94%	0	0.00%	198	4.85%	13	3.86%	137	3.65%
African American	4,056	36.69%	16,461	40.50%	2,277	41.59%	8	28.57%	1,370	33.55%	154	45.70%	1,739	46.35%
White	6,489	58.70%	20,970	51.59%	2,770	50.59%	19	67.86%	2,339	57.27%	151	44.81%	1,619	43.15%
Hispanic	318	2.88%	2,607	6.41%	243	4.44%	1	3.57%	163	3.99%	17	5.04%	240	6.40%

Table 12

Students with Disabilities by Least Restrictive Environment
 *Ages 3-21
 October 31, 2003

	Ages 6-21										Ages 3-21								
	Grand Total	Out < 21%		Out 21-60%		Out > 60%		Home		Hospital Total	Hospital Percent	Day				Residential			
		Total	Percent	Total	Percent	Total	Percent	Total	Percent			Total	Percent	Total	Percent	Total	Percent	Total	Percent
Total State	113,760	55,989	55.07%	19,249	18.93%	18,394	18.09%	310	0.30%	20	0.02%	3,813	3.35%	3,903	3.43%	110	0.10%	350	0.31%
Allegany	1,648	1,114	74.17%	207	13.78%	139	9.25%	4	0.27%	0	0.00%	0	0.00%	33	2.00%	0	0.00%	5	0.30%
Anne Arundel	10,512	5,509	59.32%	1,521	16.38%	1,481	15.95%	46	0.50%	4	0.04%	490	4.66%	335	3.19%	3	0.03%	18	0.17%
Baltimore City	15,313	5,272	37.77%	3,365	24.11%	3,786	27.12%	22	0.16%	6	0.04%	804	5.25%	742	4.85%	2	0.01%	20	0.13%
Edison Schools	216	107	54.04%	25	12.63%	65	32.83%	0	0.00%	0	0.00%	0	0.00%	2	0.93%	0	0.00%	0	0.00%
Baltimore	14,005	7,007	57.06%	904	7.36%	3,343	27.22%	65	0.53%	0	0.00%	511	3.65%	462	3.30%	0	0.00%	42	0.30%
Calvert	2,373	991	45.92%	883	40.92%	162	7.51%	9	0.42%	0	0.00%	80	3.37%	40	1.69%	0	0.00%	3	0.13%
Caroline	709	355	55.73%	177	27.79%	95	14.91%	7	1.10%	0	0.00%	0	0.00%	1	0.14%	0	0.00%	2	0.28%
Carroll	3,701	2,339	71.49%	535	16.35%	263	8.04%	6	0.18%	3	0.08%	37	1.00%	92	2.49%	0	0.00%	3	0.08%
Cecil	2,554	1,481	64.59%	490	21.37%	263	11.47%	8	0.35%	0	0.00%	1	0.04%	33	1.29%	3	0.12%	14	0.55%
Charles	2,489	1,362	62.85%	392	18.09%	305	14.07%	10	0.46%	1	0.04%	40	1.61%	49	1.97%	3	0.12%	6	0.24%
Dorchester	570	412	80.47%	45	8.79%	54	10.55%	1	0.20%	0	0.00%	0	0.00%	0	0.00%	0	0.00%	0	0.00%
Frederick	4,762	3,355	77.45%	534	12.33%	243	5.61%	42	0.97%	0	0.00%	104	2.18%	56	1.18%	0	0.00%	1	0.02%
Garrett	731	441	67.33%	125	19.08%	80	12.21%	3	0.46%	0	0.00%	0	0.00%	6	0.82%	0	0.00%	0	0.00%
Harford	6,103	3,549	65.40%	1,414	26.05%	180	3.32%	10	0.18%	1	0.02%	132	2.16%	128	2.10%	3	0.05%	18	0.29%
Howard	5,070	2,876	66.57%	937	21.69%	306	7.08%	2	0.05%	0	0.00%	95	1.87%	108	2.13%	0	0.00%	14	0.28%
Kent	339	224	71.79%	37	11.86%	44	14.10%	3	0.96%	0	0.00%	0	0.00%	4	1.18%	0	0.00%	0	0.00%
Montgomery	17,334	7,468	48.11%	3,098	19.96%	3,803	24.50%	28	0.18%	3	0.02%	500	2.88%	632	3.65%	69	0.40%	17	0.10%
Prince George's	15,098	5,652	41.61%	3,280	24.15%	3,111	22.91%	17	0.13%	0	0.00%	492	3.26%	1,010	6.69%	21	0.14%	46	0.30%
Queen Anne's	1,037	769	83.68%	111	12.08%	22	2.39%	4	0.44%	0	0.00%	0	0.00%	11	1.06%	0	0.00%	2	0.19%
St. Mary's	2,222	1,356	68.87%	388	19.71%	202	10.26%	10	0.51%	0	0.00%	0	0.00%	4	0.18%	1	0.05%	8	0.36%
Somerset	359	246	74.32%	25	7.55%	53	16.01%	2	0.60%	0	0.00%	2	0.56%	1	0.28%	1	0.28%	1	0.28%
Talbot	458	286	72.41%	84	21.27%	24	6.08%	0	0.00%	0	0.00%	0	0.00%	0	0.00%	0	0.00%	1	0.22%
Washington	2,780	1,976	77.61%	285	11.19%	101	3.97%	5	0.20%	0	0.00%	80	2.88%	93	3.35%	0	0.00%	8	0.29%
Wicomico	1,711	1,156	74.01%	185	11.84%	209	13.38%	2	0.13%	0	0.00%	0	0.00%	1	0.06%	3	0.18%	6	0.35%
Worcester	765	526	77.58%	98	14.45%	47	6.93%	4	0.59%	2	0.26%	0	0.00%	1	0.13%	0	0.00%	0	0.00%
Total Local Education Agencies	112,859	55,829	55.38%	19,145	18.99%	18,381	18.23%	310	0.31%	20	0.02%	3,368	2.98%	3,844	3.41%	109	0.10%	235	0.21%
Department of Juvenile Services	180	143	79.44%	24	13.33%	13	7.22%	0	0.00%	0	0.00%	0	0.00%	0	0.00%	0	0.00%	0	0.00%
Carter Center	9	9	100.00%	0	0.00%	0	0.00%	0	0.00%	0	0.00%	0	0.00%	0	0.00%	0	0.00%	0	0.00%
Cheltenham Detention Facility	16	5	31.25%	3	18.75%	8	50.00%	0	0.00%	0	0.00%	0	0.00%	0	0.00%	0	0.00%	0	0.00%
Cumberland Youth Services Ctr.	25	19	76.00%	6	24.00%	0	0.00%	0	0.00%	0	0.00%	0	0.00%	0	0.00%	0	0.00%	0	0.00%
Hickey School	74	66	89.19%	8	10.81%	0	0.00%	0	0.00%	0	0.00%	0	0.00%	0	0.00%	0	0.00%	0	0.00%
Maryland Youth Residence Center	8	8	100.00%	0	0.00%	0	0.00%	0	0.00%	0	0.00%	0	0.00%	0	0.00%	0	0.00%	0	0.00%
Noyse Children's Center	11	9	81.82%	2	18.18%	0	0.00%	0	0.00%	0	0.00%	0	0.00%	0	0.00%	0	0.00%	0	0.00%
Schaffer House	1	1	100.00%	0	0.00%	0	0.00%	0	0.00%	0	0.00%	0	0.00%	0	0.00%	0	0.00%	0	0.00%
Thomas JS Waxter Children's Ctr.	11	2	18.18%	5	45.45%	4	36.36%	0	0.00%	0	0.00%	0	0.00%	0	0.00%	0	0.00%	0	0.00%
Thomas O'Farrell	20	20	100.00%	0	0.00%	0	0.00%	0	0.00%	0	0.00%	0	0.00%	0	0.00%	0	0.00%	0	0.00%
Western Maryland Children's Detention Ctr.	5	4	80.00%	0	0.00%	1	20.00%	0	0.00%	0	0.00%	0	0.00%	0	0.00%	0	0.00%	0	0.00%
Adult Corrections	97	17	17.53%	80	82.47%	0	0.00%	0	0.00%	0	0.00%	0	0.00%	0	0.00%	0	0.00%	0	0.00%
Maryland School for the Blind	180	0	0.00%	0	0.00%	0	0.00%	0	0.00%	0	0.00%	1	0.56%	59	32.78%	1	0.56%	115	63.89%
Maryland School for the Deaf	444	0	0.00%	0	0.00%	0	0.00%	0	0.00%	0	0.00%	444	100.00%	0	0.00%	0	0.00%	0	0.00%
Total State Operated Programs	901	160	18.89%	104	12.28%	13	1.53%	0	0.00%	0	0.00%	445	49.39%	59	6.55%	1	0.11%	115	12.76%

*LRE A,B,C,D percentages calculated on number of 6-21 year olds.
 All other LRE percentages calculated on number of 3-21 year olds.

Figure 3
Students with Disabilities by LRE
Ages 3-21
October 31, 2003

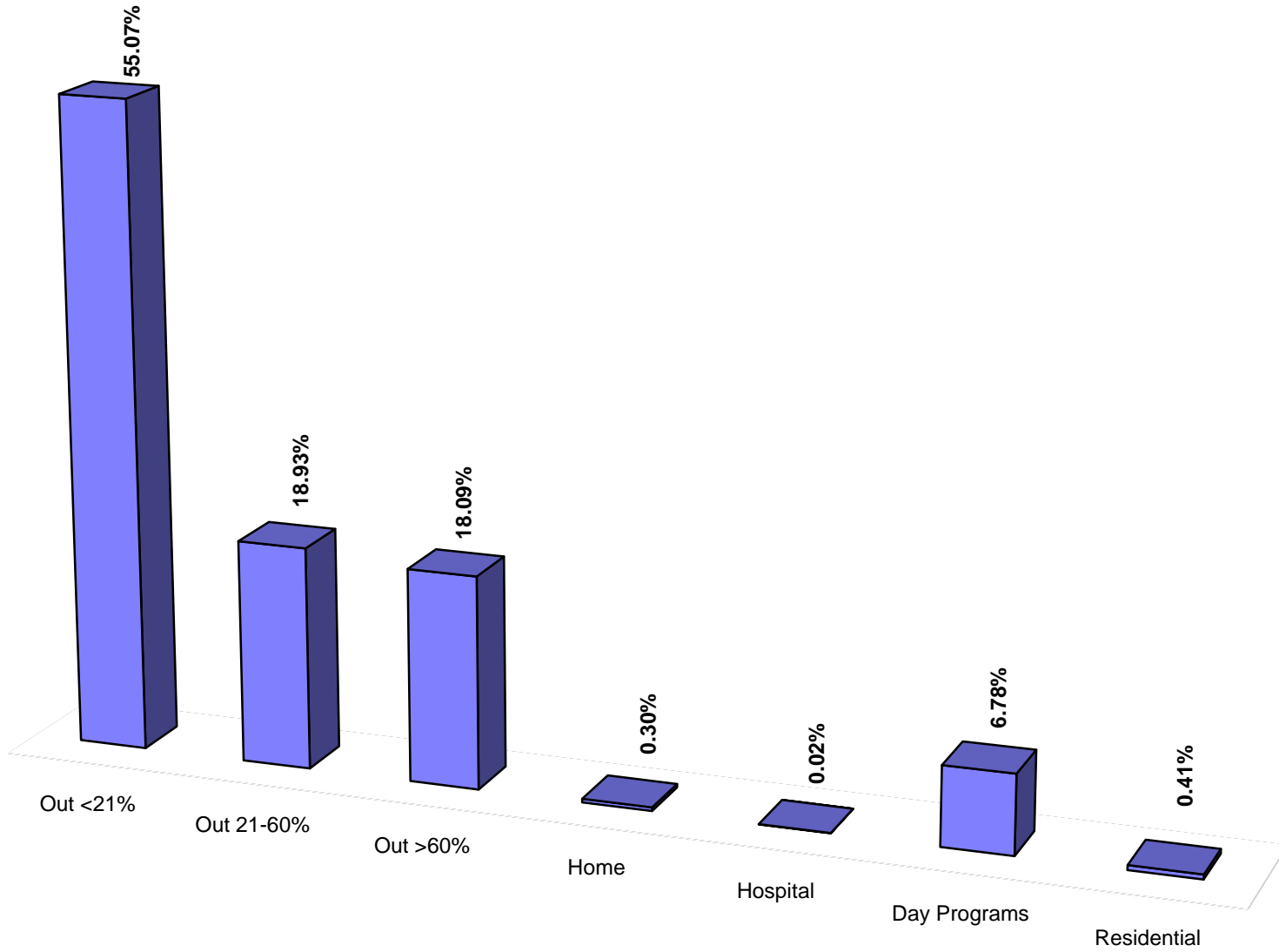


Figure 4
Students with Disabilities
Trend by LRE Setting
Ages 6-21
1997-2003

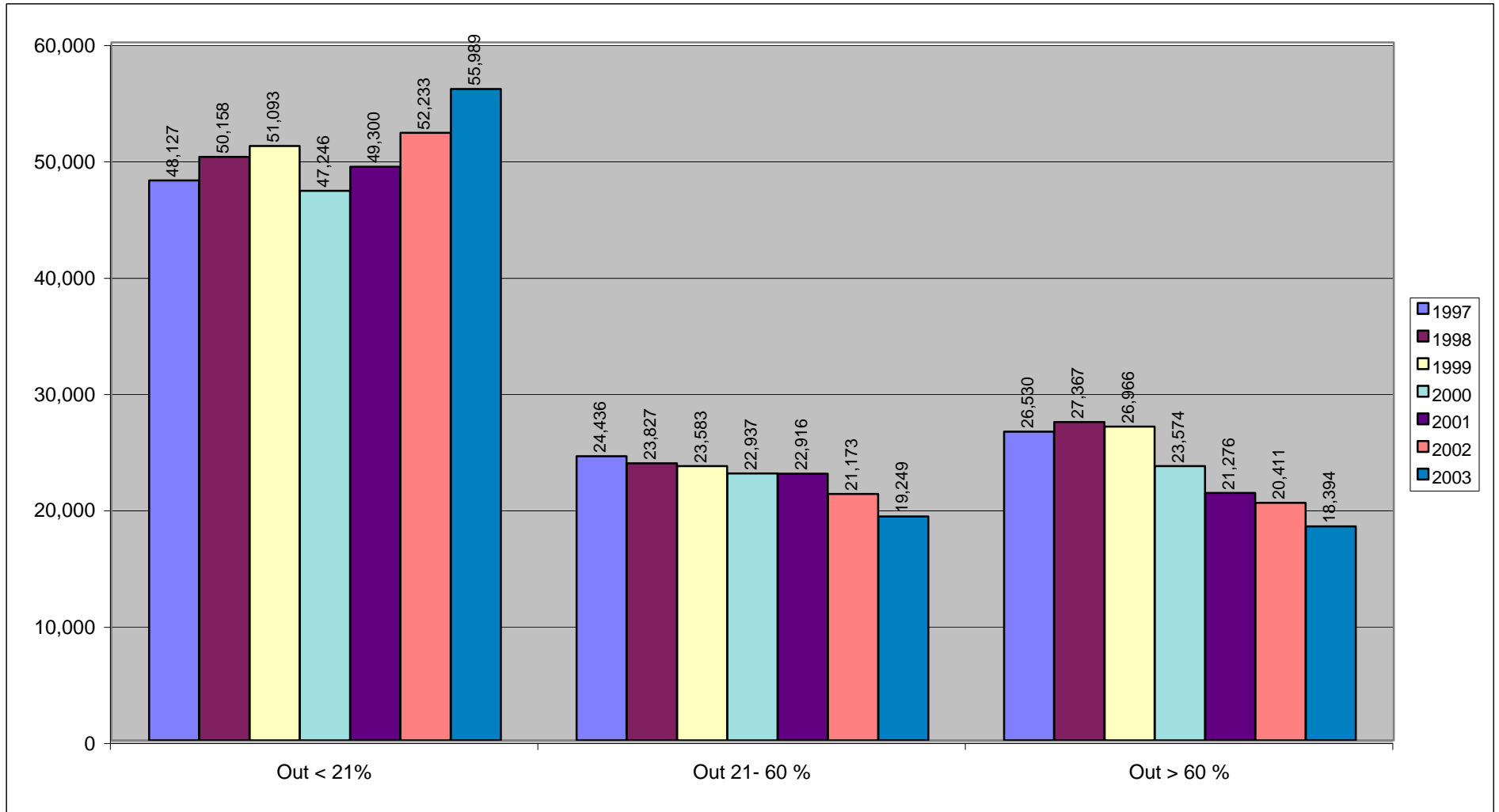


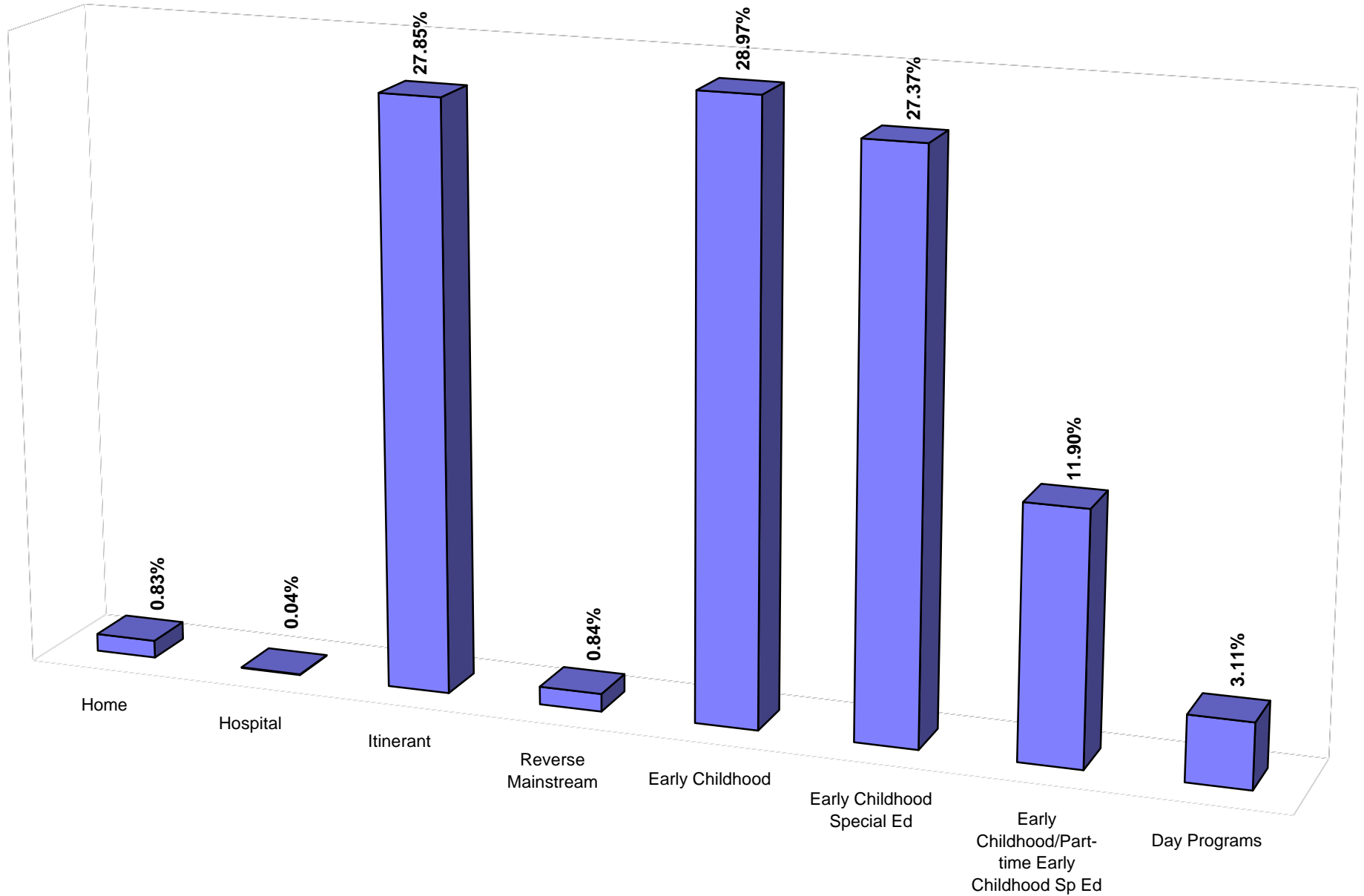
Table 12 (continued)

Preschool Students with Disabilities by Least Restrictive Environment
Ages 3-5
October 31, 2003

	Home		Itinerant		Rev Main		Early Childhood		Early Childhood Special Ed		Combined	
	Total	Percent	Total	Percent	Total	Percent	Total	Percent	Total	Percent	Total	Percent
Total State	113	0.93%	3,883	32.10%	119	0.98%	3,167	26.18%	3,098	25.61%	1,242	10.27%
Allegany	2	1.37%	76	52.05%	9	6.16%	45	30.82%	8	5.48%	6	4.11%
Anne Arundel	9	0.73%	454	37.06%	1	0.08%	177	14.45%	395	32.24%	69	5.63%
Baltimore City	42	3.10%	469	34.61%	34	2.51%	425	31.37%	302	22.29%	22	1.62%
Edison Schools	0	0.00%	7	38.89%	0	0.00%	9	50.00%	1	5.56%	0	0.00%
Baltimore	0	0.00%	168	9.74%	0	0.00%	955	55.36%	62	3.59%	486	28.17%
Calvert	0	0.00%	64	29.63%	0	0.00%	3	1.39%	67	31.02%	71	32.87%
Caroline	0	0.00%	20	27.78%	0	0.00%	30	41.67%	16	22.22%	6	8.33%
Carroll	1	0.23%	174	40.56%	0	0.00%	122	28.44%	108	25.17%	18	4.20%
Cecil	1	0.38%	51	19.54%	0	0.00%	118	45.21%	80	30.65%	11	4.21%
Charles	4	1.24%	185	57.45%	2	0.62%	124	38.51%	5	1.55%	1	0.31%
Dorchester	1	1.72%	8	13.79%	0	0.00%	19	32.76%	8	13.79%	22	37.93%
Frederick	0	0.00%	207	48.14%	0	0.00%	120	27.91%	90	20.93%	10	2.33%
Garrett	0	0.00%	10	13.16%	0	0.00%	66	86.84%	0	0.00%	0	0.00%
Harford	20	2.96%	166	24.56%	1	0.15%	289	42.75%	147	21.75%	45	6.66%
Howard	2	0.27%	259	34.53%	64	8.53%	58	7.73%	188	25.07%	161	21.47%
Kent	3	11.11%	0	0.00%	0	0.00%	24	88.89%	0	0.00%	0	0.00%
Montgomery	4	0.22%	933	51.52%	0	0.00%	48	2.65%	708	39.09%	23	1.27%
Prince George's	15	0.99%	352	23.22%	0	0.00%	138	9.10%	822	54.22%	142	9.37%
Queen Anne's	1	0.85%	31	26.27%	0	0.00%	66	55.93%	13	11.02%	7	5.93%
St. Mary's	1	0.40%	68	26.88%	8	3.16%	71	28.06%	44	17.39%	61	24.11%
Somerset	0	0.00%	4	14.29%	0	0.00%	15	53.57%	2	7.14%	7	25.00%
Talbot	0	0.00%	0	0.00%	0	0.00%	63	100.00%	0	0.00%	0	0.00%
Washington	6	2.56%	79	33.76%	0	0.00%	135	57.69%	2	0.85%	10	4.27%
Wicomico	1	0.67%	56	37.58%	0	0.00%	37	24.83%	12	8.05%	43	28.86%
Worcester	0	0.00%	42	48.28%	0	0.00%	10	11.49%	14	16.09%	21	24.14%
Total Local Education Agencies	113	0.94%	3,883	32.24%	119	0.99%	3,167	26.30%	3,094	25.69%	1,242	10.31%
Department of Juvenile Services	0	0.00%	0	0.00%	0	0.00%	0	0.00%	0	0.00%	0	0.00%
Carter Center	0	0.00%	0	0.00%	0	0.00%	0	0.00%	0	0.00%	0	0.00%
Cheltenham Detention Facility	0	0.00%	0	0.00%	0	0.00%	0	0.00%	0	0.00%	0	0.00%
Cumberland Youth Services Ctr.	0	0.00%	0	0.00%	0	0.00%	0	0.00%	0	0.00%	0	0.00%
Hickey School	0	0.00%	0	0.00%	0	0.00%	0	0.00%	0	0.00%	0	0.00%
Maryland Youth Residence Center	0	0.00%	0	0.00%	0	0.00%	0	0.00%	0	0.00%	0	0.00%
Noyes Children's Center	0	0.00%	0	0.00%	0	0.00%	0	0.00%	0	0.00%	0	0.00%
Schaffer House	0	0.00%	0	0.00%	0	0.00%	0	0.00%	0	0.00%	0	0.00%
Thomas JS Waxter Children's Ctr.	0	0.00%	0	0.00%	0	0.00%	0	0.00%	0	0.00%	0	0.00%
Thomas O'Farrell	0	0.00%	0	0.00%	0	0.00%	0	0.00%	0	0.00%	0	0.00%
Adult Corrections	0	0.00%	0	0.00%	0	0.00%	0	0.00%	0	0.00%	0	0.00%
Maryland School for the Blind	0	0.00%	0	0.00%	0	0.00%	0	0.00%	4	40.00%	0	0.00%
Maryland School for the Deaf	0	0.00%	0	0.00%	0	0.00%	0	0.00%	0	0.00%	0	0.00%
Total State Operated Programs	0	0.00%	0	0.00%	0	0.00%	0	0.00%	4	7.41%	0	0.00%

*Percentages calculated on total number of 3-5 year olds.

Figure 5
Students with Disabilities by LRE
Age 3-5
October 31, 2003



*Percent is of 3-5 only

Table 12 continued

Students with Disabilities by Least Restrictive Environment
Ages 3-5
October 31, 2003

	Grand Total	Hospital		Day				Residential			
		Total	Percent	Public		Private		Public		Private	
				Total	Percent	Total	Percent	Total	Percent	Total	Percent
Total State	12,098	2	0.02%	327	2.70%	147	1.22%	0	0.00%	0	0.00%
Allegany	146	0	0.00%	0	0.00%	0	0.00%	0	0.00%	0	0.00%
Anne Arundel	1,225	1	0.08%	118	9.63%	1	0.08%	0	0.00%	0	0.00%
Baltimore City	1,355	0	0.00%	33	2.44%	28	2.07%	0	0.00%	0	0.00%
Edison Schools	18	0	0.00%	0	0.00%	1	5.56%	0	0.00%	0	0.00%
Baltimore	1,725	0	0.00%	48	2.78%	6	0.35%	0	0.00%	0	0.00%
Calvert	215	0	0.00%	10	4.65%	0	0.00%	0	0.00%	0	0.00%
Caroline	72	0	0.00%	0	0.00%	0	0.00%	0	0.00%	0	0.00%
Carroll	429	0	0.00%	5	1.17%	1	0.23%	0	0.00%	0	0.00%
Cecil	261	0	0.00%	0	0.00%	0	0.00%	0	0.00%	0	0.00%
Charles	322	0	0.00%	1	0.31%	0	0.00%	0	0.00%	0	0.00%
Dorchester	58	0	0.00%	0	0.00%	0	0.00%	0	0.00%	0	0.00%
Frederick	430	0	0.00%	3	0.70%	0	0.00%	0	0.00%	0	0.00%
Garrett	76	0	0.00%	0	0.00%	0	0.00%	0	0.00%	0	0.00%
Harford	676	0	0.00%	4	0.59%	4	0.59%	0	0.00%	0	0.00%
Howard	750	0	0.00%	1	0.13%	17	2.27%	0	0.00%	0	0.00%
Kent	27	0	0.00%	0	0.00%	0	0.00%	0	0.00%	0	0.00%
Montgomery	1,811	1	0.06%	16	0.88%	78	4.31%	0	0.00%	0	0.00%
Prince George's	1,516	0	0.00%	42	2.77%	5	0.33%	0	0.00%	0	0.00%
Queen Anne's	118	0	0.00%	0	0.00%	0	0.00%	0	0.00%	0	0.00%
St. Mary's	253	0	0.00%	0	0.00%	0	0.00%	0	0.00%	0	0.00%
Somerset	28	0	0.00%	0	0.00%	0	0.00%	0	0.00%	0	0.00%
Talbot	63	0	0.00%	0	0.00%	0	0.00%	0	0.00%	0	0.00%
Washington	234	0	0.00%	2	0.85%	0	0.00%	0	0.00%	0	0.00%
Wicomico	149	0	0.00%	0	0.00%	0	0.00%	0	0.00%	0	0.00%
Worcester	87	0	0.00%	0	0.00%	0	0.00%	0	0.00%	0	0.00%
Total Local Education Agencies	12,044	2	0.02%	283	2.35%	141	1.17%	0	0.00%	0	0.00%
Maryland School for the Blind	10	0	0.00%	0	0.00%	6	60.00%	0	0.00%	0	0.00%
Maryland School for the Deaf	44	0	0.00%	44	100.00%	0	0.00%	0	0.00%	0	0.00%
Total State Operated Programs	54	0	0.00%	44	81.48%	6	11.11%	0	0.00%	0	0.00%

Table 12 continued

Students with Disabilities by Least Restrictive Environment
Ages 6-21
October 31, 2003

	Grand Total	Out < 21%		Out 21-60%		Out > 60%		Home		Hospital		Day				Residential			
		Total	Percent	Total	Percent	Total	Percent	Total	Percent	Total	Percent	Public		Private		Public		Private	
												Total	Percent	Total	Percent	Total	Percent	Total	Percent
Total State	101,662	55,989	55.07%	19,249	18.93%	18,394	18.09%	310	0.30%	18	0.02%	3,488	3.43%	3,825	3.76%	113	0.11%	345	0.34%
Allegany	1,502	1,114	74.17%	207	13.78%	139	9.25%	4	0.27%	0	0.00%	0	0.00%	33	2.20%	0	0.00%	5	0.33%
Anne Arundel	9,287	5,509	59.32%	1,521	16.38%	1,481	15.95%	46	0.50%	3	0.03%	372	4.01%	334	3.60%	3	0.03%	18	0.19%
Baltimore City	13,958	5,272	37.77%	3,365	24.11%	3,786	27.12%	22	0.16%	6	0.04%	771	5.52%	714	5.12%	2	0.01%	20	0.14%
Edison Schools	198	107	54.04%	25	12.63%	65	32.83%	0	0.00%	0	0.00%	0	0.00%	1	0.51%	0	0.00%	0	0.00%
Baltimore	12,280	7,007	57.06%	904	7.36%	3,343	27.22%	65	0.53%	0	0.00%	463	3.77%	456	3.71%	0	0.00%	42	0.34%
Calvert	2,158	991	45.92%	883	40.92%	162	7.51%	9	0.42%	0	0.00%	70	3.24%	40	1.85%	0	0.00%	3	0.14%
Caroline	637	355	55.73%	177	27.79%	95	14.91%	7	1.10%	0	0.00%	0	0.00%	1	0.16%	0	0.00%	2	0.31%
Carroll	3,272	2,339	71.49%	535	16.35%	263	8.04%	6	0.18%	3	0.09%	32	0.98%	91	2.78%	0	0.00%	3	0.09%
Cecil	2,293	1,481	64.59%	490	21.37%	263	11.47%	8	0.35%	0	0.00%	1	0.04%	33	1.44%	3	0.13%	14	0.61%
Charles	2,167	1,362	62.85%	392	18.09%	305	14.07%	10	0.46%	1	0.05%	39	1.80%	49	2.26%	3	0.14%	6	0.28%
Dorchester	512	412	80.47%	45	8.79%	54	10.55%	1	0.20%	0	0.00%	0	0.00%	0	0.00%	0	0.00%	0	0.00%
Frederick	4,332	3,355	77.45%	534	12.33%	243	5.61%	42	0.97%	0	0.00%	101	2.33%	56	1.29%	0	0.00%	1	0.02%
Garrett	655	441	67.33%	125	19.08%	80	12.21%	3	0.46%	0	0.00%	0	0.00%	6	0.92%	0	0.00%	0	0.00%
Harford	5,427	3,549	65.40%	1,414	26.05%	180	3.32%	10	0.18%	1	0.02%	128	2.36%	124	2.28%	3	0.06%	18	0.33%
Howard	4,320	2,876	66.57%	937	21.69%	306	7.08%	2	0.05%	0	0.00%	94	2.18%	91	2.11%	0	0.00%	14	0.32%
Kent	312	224	71.79%	37	11.86%	44	14.10%	3	0.96%	0	0.00%	0	0.00%	4	1.28%	0	0.00%	0	0.00%
Montgomery	15,523	7,468	48.11%	3,098	19.96%	3,803	24.50%	28	0.18%	2	0.01%	485	3.12%	621	4.00%	69	0.44%	17	0.11%
Prince George's	13,582	5,652	41.61%	3,280	24.15%	3,111	22.91%	17	0.13%	0	0.00%	450	3.31%	1,005	7.40%	21	0.15%	46	0.34%
Queen Anne's	919	769	83.68%	111	12.08%	22	2.39%	4	0.44%	0	0.00%	0	0.00%	11	1.20%	0	0.00%	2	0.22%
St. Mary's	1,969	1,356	68.87%	388	19.71%	202	10.26%	10	0.51%	0	0.00%	0	0.00%	4	0.20%	1	0.05%	8	0.41%
Somerset	331	246	74.32%	25	7.55%	53	16.01%	2	0.60%	0	0.00%	2	0.60%	1	0.30%	1	0.30%	1	0.30%
Talbot	395	286	72.41%	84	21.27%	24	6.08%	0	0.00%	0	0.00%	0	0.00%	0	0.00%	0	0.00%	1	0.25%
Washington	2,546	1,976	77.61%	285	11.19%	101	3.97%	5	0.20%	0	0.00%	78	3.06%	93	3.65%	0	0.00%	8	0.31%
Wicomico	1,562	1,156	74.01%	185	11.84%	209	13.38%	2	0.13%	0	0.00%	1	0.06%	3	0.19%	6	0.38%	1	0.06%
Worcester	678	526	77.58%	98	14.45%	47	6.93%	4	0.59%	2	0.29%	0	0.00%	1	0.15%	0	0.00%	0	0.00%
Total Local Education Agencies	100,815	55,829	55.38%	19,145	18.99%	18,381	18.23%	310	0.31%	18	0.02%	3,087	3.06%	3,772	3.74%	112	0.11%	230	0.23%
Department of Juvenile Services	175	143	79.44%	24	13.33%	13	7.22%	0	0.00%	0	0.00%	0	0.00%	0	0.00%	0	0.00%	0	0.00%
Carter Center	9	9	100.00%	0	0.00%	0	0.00%	0	0.00%	0	0.00%	0	0.00%	0	0.00%	0	0.00%	0	0.00%
Cheltenham Detention Facility	16	5	31.25%	3	18.75%	8	50.00%	0	0.00%	0	0.00%	0	0.00%	0	0.00%	0	0.00%	0	0.00%
Cumberland Youth Services Ctr.	25	19	76.00%	6	24.00%	0	0.00%	0	0.00%	0	0.00%	0	0.00%	0	0.00%	0	0.00%	0	0.00%
Hickey School	74	66	89.19%	8	10.81%	0	0.00%	0	0.00%	0	0.00%	0	0.00%	0	0.00%	0	0.00%	0	0.00%
Maryland Youth Residence Center	8	8	100.00%	0	0.00%	0	0.00%	0	0.00%	0	0.00%	0	0.00%	0	0.00%	0	0.00%	0	0.00%
Noyse Children's Center	11	9	81.82%	2	18.18%	0	0.00%	0	0.00%	0	0.00%	0	0.00%	0	0.00%	0	0.00%	0	0.00%
Schaffer House	1	1	100.00%	0	0.00%	0	0.00%	0	0.00%	0	0.00%	0	0.00%	0	0.00%	0	0.00%	0	0.00%
Thomas JS Waxter Children's Ctr.	11	2	18.18%	5	45.45%	4	36.36%	0	0.00%	0	0.00%	0	0.00%	0	0.00%	0	0.00%	0	0.00%
Thomas O'Farrell	20	20	100.00%	0	0.00%	0	0.00%	0	0.00%	0	0.00%	0	0.00%	0	0.00%	0	0.00%	0	0.00%
Western Maryland Children's Detention Ctr.	5	4	80.00%	0	0.00%	1	20.00%	0	0.00%	0	0.00%	0	0.00%	0	0.00%	0	0.00%	0	0.00%
Adult Corrections	97	17	17.53%	80	82.47%	0	0.00%	0	0.00%	0	0.00%	0	0.00%	0	0.00%	0	0.00%	0	0.00%
Maryland School for the Blind	170	0	0.00%	0	0.00%	0	0.00%	0	0.00%	0	0.00%	1	0.59%	53	31.18%	1	0.59%	115	67.65%
Maryland School for the Deaf	400	0	0.00%	0	0.00%	0	0.00%	0	0.00%	0	0.00%	400	100.00%	0	0.00%	0	0.00%	0	0.00%
Total State Operated Programs	847	160	18.89%	104	12.28%	13	1.53%	0	0.00%	0	0.00%	401	47.34%	53	6.26%	1	0.12%	115	13.58%

*Percentages calculated on total number of 6-21 year olds.

Table 12a
 Students with Disabilities in LRE M Compared to LRE A in Rank Order
 October 31, 2003

LRE M Early Childhood Ages 3-5			LRE A Out < 21% Ages 6-21		
	Total	Percent		Total	Percent
Total Local Education Agencies	3,158	26.25%	Total Local Education Agencies	55,722	55.38%
Calvert	3	1.39%	Baltimore City	5,272	37.77%
Montgomery	48	2.65%	Prince George's	5,652	41.61%
Howard	58	7.73%	Calvert	991	45.92%
Prince George's	138	9.10%	Montgomery	7,468	48.11%
Worcester	10	11.49%	Caroline	355	55.73%
Anne Arundel	177	14.45%	Baltimore	7,007	57.06%
Wicomico	37	24.83%	Anne Arundel	5,509	59.32%
Frederick	120	27.91%	Charles	1,362	62.85%
St. Mary's	71	28.06%	Harford	3,549	65.40%
Carroll	122	28.44%	Cecil	1,481	65.49%
Allegany	45	30.82%	Howard	2,876	66.57%
Baltimore City	425	31.37%	Garrett	441	67.33%
Dorchester	19	32.76%	St. Mary's	1,356	68.87%
Charles	124	38.51%	Carroll	2,339	71.49%
Caroline	30	41.67%	Kent	224	71.79%
Harford	289	42.75%	Talbot	286	72.41%
Cecil	118	45.21%	Wicomico	1,156	74.01%
Somerset	15	53.57%	Allegany	1,114	74.17%
Baltimore	955	55.36%	Somerset	246	74.32%
Queen Anne's	66	55.93%	Frederick	3,355	77.45%
Washington	135	57.69%	Worcester	526	77.58%
Garrett	66	86.84%	Washington	1,976	77.61%
Kent	24	88.89%	Dorchester	412	80.47%
Talbot	63	100.00%	Queen Anne's	769	83.68%

*Data does not include Edison Schools

Table 12b
 Maryland Students with Disabilities LRE O Compared to LRE B in Rank Order
 October 31, 2003

LRE O Combined Early Childhood Ages 3-5			LRE B Out 21-60% Ages 6-21		
	Total	Percent		Total	Percent
Total Local Education Agencies	1,242	10.32%	Total Local Education Agencies	19,120	18.10%
Garrett	0	0.00%	Baltimore	904	7.36%
Kent	0	0.00%	Somerset	25	7.55%
Talbot	0	0.00%	Dorchester	45	8.79%
Charles	1	0.31%	Washington	285	11.19%
Montgomery	23	1.27%	Wicomico	185	11.84%
Baltimore City	22	1.62%	Kent	37	11.86%
Frederick	10	2.33%	Queen Anne's	111	12.08%
Allegany	6	4.11%	Frederick	534	12.33%
Carroll	18	4.20%	Allegany	207	13.78%
Cecil	11	4.21%	Worcester	98	14.45%
Washington	10	4.27%	Carroll	535	16.35%
Anne Arundel	69	5.63%	Anne Arundel	1,521	16.38%
Queen Anne's	7	5.93%	Charles	392	18.09%
Harford	45	6.66%	Garrett	125	19.08%
Caroline	6	8.33%	St. Mary's	388	19.71%
Prince George's	142	9.37%	Montgomery	3,098	19.96%
Howard	161	21.47%	Talbot	84	21.27%
St. Mary's	61	24.11%	Cecil	490	21.37%
Worcester	21	24.14%	Howard	937	21.69%
Somerset	7	25.00%	Baltimore City	3,365	24.11%
Baltimore	486	28.17%	Prince George's	3,280	24.15%
Wicomico	43	28.86%	Harford	1,414	26.05%
Calvert	71	32.87%	Caroline	177	27.79%
Dorchester	22	37.93%	Calvert	883	40.92%

*Data does not include Edison Schools

Table 12c

Students with Disabilities LRE N Compared to LRE C in Rank Order

October 31, 2003

LRE N Early Childhood Special Education Ages 3-5			LRE C Out > 60% Ages 6-21		
	Total	Percent		Total	Percent
Total Local Education Agencies	3,093	25.72%	Total Local Education Agencies	18,316	18.20%
Garrett	0	0.00%	Queen Anne's	22	2.39%
Kent	0	0.00%	Harford	180	3.32%
Talbot	0	0.00%	Washington	101	3.97%
Washington	2	0.85%	Frederick	243	5.61%
Charles	5	1.55%	Talbot	24	6.08%
Baltimore	62	3.59%	Worcester	47	6.93%
Allegany	8	5.48%	Howard	306	7.08%
Somerset	2	7.14%	Calvert	162	7.51%
Wicomico	12	8.05%	Carroll	263	8.04%
Queen Anne's	13	11.02%	Allegany	139	9.25%
Dorchester	8	13.79%	St. Mary's	202	10.26%
Worcester	14	16.09%	Dorchester	54	10.55%
St. Mary's	44	17.39%	Cecil	263	11.47%
Frederick	90	20.93%	Garrett	80	12.21%
Harford	147	21.75%	Wicomico	209	13.38%
Caroline	16	22.22%	Charles	305	14.07%
Baltimore City	302	22.29%	Kent	44	14.10%
Howard	188	25.07%	Caroline	95	14.91%
Carroll	108	25.17%	Anne Arundel	1,481	15.95%
Cecil	80	30.65%	Somerset	53	16.01%
Calvert	67	31.02%	Prince George's	3,111	22.91%
Anne Arundel	395	32.24%	Montgomery	3,803	24.50%
Montgomery	708	39.09%	Baltimore City	3,786	27.12%
Prince George's	822	54.22%	Baltimore	3,343	27.22%

*Data does not include Edison Schools

Table 12d
Maryland Special Education - Focused Monitoring LRE
Quartile Clusters (Child Count 10-31-2003)
LRE for Ages 3-5

Categories	LRE M Goal ≥ 60 %			LRE O Part Time			LRE M + O Goal ≥ 80 %			LRE N Goal Goal ≤ 15 %			
	EARLY CHILDHOOD SETTING			EARLY CHILDHOOD/EARLY CHILDHOOD SP ED			COMBINED LRE M + O			EARLY CHILDHOOD SP ED			
	Total 3-5	Total LRE M	Percent	Total 3-5	Total LRE O	Percent	Total 3-5	Total LRE M+O	Percent	Total 3-5	Total LRE N	Percent	
Total State	12,026	3,158	26.26%	12,026	1,242	10.33%	12,026	4,400	36.59%	12,026	3,093	25.72%	
1	Baltimore Co.	1725	955	55.36%	1725	486	28.17%	1725	1441	83.54%	1725	62	3.59%
	Garrett	76	66	86.84%	76	0	0.00%	76	66	86.84%	76	0	0.00%
	Kent	27	24	88.89%	27	0	0.00%	27	24	88.89%	27	0	0.00%
	Somerset	28	15	53.57%	28	7	25.00%	28	22	78.57%	28	2	7.14%
	Talbot	63	63	100.00%	63	0	0.00%	63	63	100.00%	63	0	0.00%
	Washington	234	135	57.69%	234	10	4.27%	234	145	61.97%	234	2	0.85%
2	Allegany	146	45	30.82%	146	6	4.11%	146	51	34.93%	146	8	5.48%
	Charles	322	124	38.51%	322	1	0.31%	322	125	38.82%	322	5	1.55%
	Dorchester	58	19	32.76%	58	22	37.93%	58	41	70.69%	58	8	13.79%
	Queen Anne's	118	66	55.93%	118	7	5.93%	118	73	61.86%	118	13	11.02%
	St. Mary's	253	71	28.06%	253	61	24.11%	253	132	52.17%	253	44	17.39%
	Wicomico	149	37	24.83%	149	43	28.86%	149	80	53.69%	149	12	8.05%
3	Baltimore City	1355	425	31.37%	1355	22	1.62%	1355	447	32.99%	1355	302	22.29%
	Caroline	72	30	41.67%	72	6	8.33%	72	36	50.00%	72	16	22.22%
	Carroll	429	122	28.44%	429	18	4.20%	429	140	32.63%	429	108	25.17%
	Frederick	430	120	27.91%	430	10	2.33%	430	130	30.23%	430	90	20.93%
	Harford	676	289	42.75%	676	45	6.66%	676	334	49.41%	676	147	21.75%
	Worcester	87	10	11.49%	87	21	24.14%	87	31	35.63%	87	14	16.09%
4	Anne Arundel	1225	177	14.45%	1225	69	5.63%	1,225	246	20.08%	1225	395	32.24%
	Calvert	215	3	1.40%	215	71	33.02%	215	74	34.42%	215	67	31.16%
	Cecil	261	118	45.21%	261	11	4.21%	261	129	49.43%	261	80	30.65%
	Howard	750	58	7.73%	750	161	21.47%	750	219	29.20%	750	188	25.07%
	Montgomery	1811	48	2.65%	1811	23	1.27%	1811	71	3.92%	1811	708	39.09%
	Prince George's	1516	138	9.10%	1516	142	9.37%	1516	280	18.47%	1516	822	54.22%

Percentages calculated on total number of 3-5 year olds
 Quartile determination based on review of above indicators.
 Overall score calculated on assigned points compared to the goal.

- Category 1 Continuous Improvement
- Category 2 Continuous Improvement
- Category 3 State Technical assistance
- Category 4 State Technical Assistance and Oversight

Table 12e
Maryland Special Education - Focused Monitoring LRE
Quartile Clusters (Child Count 10-31-2003)
LRE for Ages 6-21

Categories (Overall) Rank Score	LEA	LRE A (Out < 21%) Goal > 60%				LRE B (Out 21 < 60%)				LRE A + B Goal ≥ 80 %				LRE C (Out > 60%) Goal ≤ 15 %			
		Total 6-21	Total LRE A	LRE A Sub- Ranking	Percent	Total 6-21	Total LRE B	LRE B Sub- Ranking	Percent	Total 6-21	Total LRE A+B	LRE A+B Sub- Ranking	Percent	Total 6-21	Total LRE C	LRE C Sub- Ranking	Percent
	<i>State Total</i>	100,617	55,722		55.38%	100,617	19,120		19.00%	100,617	74,842		74.38%	100,617	18,316		18.20%
1	2 Frederick	4,332	3,355	5	77.45%	4,332	534	17	12.33%	4,332	3,889	5	89.77%	4,332	243	4	5.61%
	3 Harford	5,427	3,549	15	65.40%	5,427	1,414	3	26.05%	5,427	4,963	4	91.45%	5,427	180	2	3.32%
	1 Queen Anne's	919	769	1	83.68%	919	111	18	12.08%	919	880	1	95.76%	919	22	1	2.39%
	4 Talbot	395	286	9	72.41%	395	84	8	21.27%	395	370	2	93.67%	395	24	5	6.08%
	5 Washington	2,546	1,976	3	77.61%	2,546	285	21	11.19%	2,546	2,261	7	88.81%	2,546	101	3	3.97%
	6 Worcester	678	526	4	77.58%	678	98	15	14.45%	678	624	3	92.04%	678	47	6	6.93%
2	7 Allegany	1,502	1,114	7	74.17%	1,502	207	16	13.78%	1,502	1,321	10	87.95%	1,502	139	10	9.25%
	8 Carroll	3,272	2,339	11	71.49%	3,272	535	14	16.35%	3,272	2,874	11	87.84%	3,272	263	9	8.04%
	9 Dorchester	512	412	2	80.47%	512	45	22	8.79%	512	457	6	89.26%	512	54	12	10.55%
	10 Howard	4,320	2,876	14	66.57%	4,320	937	6	21.69%	4,320	3,813	9	88.26%	4,320	306	7	7.08%
	11 Kent	312	224	10	71.79%	312	37	19	11.86%	312	261	16	83.65%	312	44	17	14.10%
	12 Wicomico	1,562	1,156	8	74.01%	1,562	185	20	11.84%	1,562	1,341	15	85.85%	1,562	209	15	13.38%
3	18 Calvert	2,158	991	22	45.92%	2,158	883	1	40.92%	2,158	1,874	12	86.84%	2,158	162	8	7.51%
	13 Cecil	2,293	1,481	16	64.59%	2,293	490	7	21.37%	2,293	1,971	14	85.96%	2,293	263	13	11.47%
	14 Charles	2,167	1,362	17	62.85%	2,167	392	12	18.09%	2,167	1,754	19	80.94%	2,167	305	16	14.07%
	15 Garrett	655	441	13	67.33%	655	125	11	19.08%	655	566	13	86.41%	655	80	14	12.21%
	17 Somerset	331	246	6	74.32%	331	25	23	7.55%	331	271	18	81.87%	331	53	20	16.01%
	16 St. Mary's	1,969	1,356	12	68.87%	1,969	388	10	19.71%	1,969	1,744	8	88.57%	1,969	202	11	10.26%
4	20 Anne Arundel	9,287	5,509	18	59.32%	9,287	1,521	13	16.38%	9,287	7,030	20	75.70%	9,287	1,481	19	15.95%
	21 Baltimore	12,280	7,007	19	57.06%	12,280	904	24	7.36%	12,280	7,911	23	64.42%	12,280	3,343	24	27.22%
	24 Baltimore City	13,958	5,272	24	37.77%	13,958	3,365	5	24.11%	13,958	8,637	24	61.88%	13,958	3,786	23	27.12%
	19 Caroline	637	355	20	55.73%	637	177	2	27.79%	637	532	17	83.52%	637	95	18	14.91%
	22 Montgomery	15,523	7,468	21	48.11%	15,523	3,098	9	19.96%	15,523	10,566	21	68.07%	15,523	3,803	22	24.50%
	23 Prince George's	13,582	5,652	23	41.61%	13,582	3,280	4	24.15%	13,582	8,932	22	65.76%	13,582	3,111	21	22.91%

Quartile determination based on review of above indicators.
 Overall score calculated on assigned points compared to the goal.

- Category 1 Continuous Improvement
- Category 2 Continuous Improvement
- Category 3 State Technical Assistance
- Category 4 State Technical Assistance and Oversight

Table 13
 Students with Disabilities Served in Home/Hospital
 Ages 3-21
 October 31, 2003

	Grand Total	Home		Hospital	
		Number	Percent	Number	Percent
Total State	113,760	310	0.27%	20	0.02%
Allegany	1,648	4	0.24%	0	0.00%
Anne Arundel	10,512	46	0.44%	4	0.04%
Baltimore City	15,313	22	0.14%	6	0.04%
Edison Schools	216	0	0.00%	0	0.00%
Baltimore	14,005	65	0.46%	0	0.00%
Calvert	2,373	9	0.38%	0	0.00%
Caroline	709	7	0.99%	0	0.00%
Carroll	3,701	6	0.16%	3	0.08%
Cecil	2,554	8	0.31%	0	0.00%
Charles	2,489	10	0.40%	1	0.04%
Dorchester	570	1	0.18%	0	0.00%
Frederick	4,762	42	0.88%	0	0.00%
Garrett	731	3	0.41%	0	0.00%
Harford	6,103	10	0.16%	1	0.02%
Howard	5,070	2	0.04%	0	0.00%
Kent	339	3	0.88%	0	0.00%
Montgomery	17,334	28	0.16%	3	0.02%
Prince George's	15,098	17	0.11%	0	0.00%
Queen Anne's	1,037	4	0.39%	0	0.00%
St. Mary's	2,222	10	0.45%	0	0.00%
Somerset	359	2	0.56%	0	0.00%
Talbot	458	0	0.00%	0	0.00%
Washington	2,780	5	0.18%	0	0.00%
Wicomico	1,711	2	0.12%	0	0.00%
Worcester	765	4	0.52%	2	0.26%
Total Local Education Agencies	112,859	310	0.27%	20	0.02%
Department of Juvenile Services	180	0	0.00%	0	0.00%
Carter Center	9	0	0.00%	0	0.00%
Cheltenham Detention Facility	16	0	0.00%	0	0.00%
Cumberland Youth Services Ctr.	25	0	0.00%	0	0.00%
Hickey School	74	0	0.00%	0	0.00%
Maryland Youth Residence Center	8	0	0.00%	0	0.00%
Noyse Children's Center	11	0	0.00%	0	0.00%
Schaffer House	1	0	0.00%	0	0.00%
Thomas JS Waxter Children's Ctr.	11	0	0.00%	0	0.00%
Thomas O'Farrell	20	0	0.00%	0	0.00%
Western Maryland Children's Detention Ctr	5	0	0.00%	0	0.00%
Adult Corrections	97	0	0.00%	0	0.00%
Maryland School for the Blind	180	0	0.00%	0	0.00%
Maryland School for the Deaf	444	0	0.00%	0	0.00%
Total State Operated Programs	901	0	0.00%	0	0.00%

*Home percents calculated on 6-21 year olds. Hospital percents calculated on 3-21 year olds.

Table 14

Students with Disabilities Trend by LRE
1994 - 2003

	1994	1995	1996	1997	1998	1999	2000	2001	2002	2003
Total all LRE	96,779	100,863	104,630	109,084	111,688	111,711	112,078	112,426	113,128	113,760
Ages 3-5										
Early Childhood (M)	NA	NA	NA	NA	NA	NA	2,513	2,652	3,229	3,167
Early Childhood Special Ed (N)	NA	NA	NA	NA	NA	NA	2,326	3,144	3,150	3,098
Combined (O)	NA	NA	NA	NA	NA	NA	1,871	1,115	1,370	1,242
Ages 6-21										
Out < 21% (A)	47,506	43,295	44,997	48,127	50,158	51,093	47,246	49,300	52,233	55,989
Out 21- 60% (B)	18,772	25,596	24,589	24,436	23,827	23,583	22,937	22,916	21,173	19,249
Out > 60% (C)	23,578	23,010	25,479	26,530	27,367	26,966	23,574	21,276	20,411	18,394

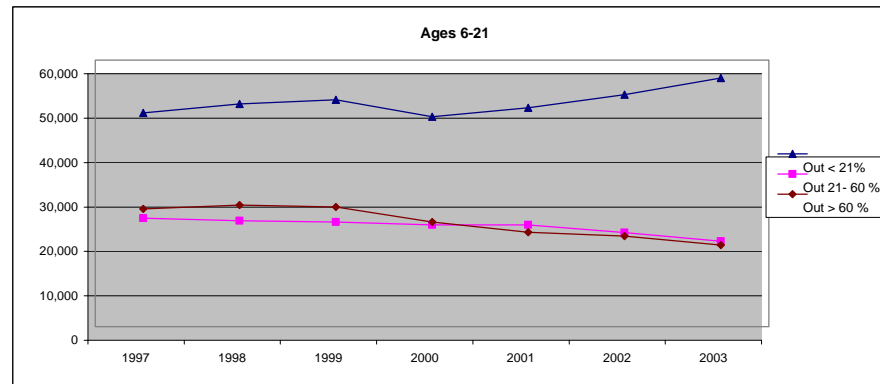
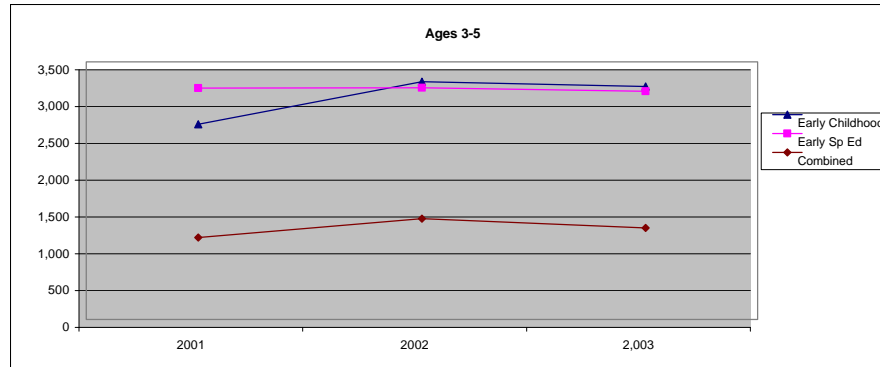


Table 15
Students with Disabilities by Race and LRE
Ages 3-21
October 31, 2003

	Grand Total	Out < 21%		Out 21-60%		Out > 60%		Home		Hospital		Day				Residential			
		Total	Percent	Total	Percent	Total	Percent	Total	Percent	Total	Percent	Public		Private		Public		Private	
												Total	Percent	Total	Percent	Total	Percent	Total	Percent
Total State	113,760	55,989	49.22%	19,249	16.92%	18,394	16.17%	310	0.27%	20	0.02%	3,813	3.35%	3,903	3.43%	110	0.10%	350	0.31%
American Indian/Alaskan Native	448	229	51.12%	66	14.73%	64	14.29%	3	0.67%	0	0.00%	9	2.01%	19	0.22%	0	0.00%	1	4.24%
Asian	2,328	1,060	45.53%	304	13.06%	409	17.57%	1	0.04%	1	0.04%	93	3.99%	65	0.47%	2	0.09%	11	2.79%
African American	45,681	18,161	39.76%	9,597	21.01%	10,265	22.47%	105	0.23%	7	0.02%	1,818	3.98%	1,785	0.28%	46	0.10%	128	3.91%
White	59,191	33,966	57.38%	7,911	13.37%	6,364	10.75%	193	0.33%	11	0.02%	1,735	2.93%	1,928	0.35%	57	0.10%	205	3.26%
Hispanic	6,112	2,573	42.10%	1,371	22.43%	1,292	21.14%	8	0.13%	1	0.02%	158	2.59%	106	0.08%	5	0.08%	5	1.73%

Preschool Students with Disabilities by Race and LRE
Ages 3-5

	Home		Itinerant		Reverse Mainstream		Early Childhood		Early Childhood Special Ed		Combined	
	Total	Percent	Total	Percent	Total	Percent	Total	Percent	Total	Percent	Total	Percent
Total State	113	25.22%	3,883	3.41%	119	0.10%	3,167	2.78%	3,098	2.72%	1,242	1.09%
American Indian/Alaskan Native	0	0.00%	15	3.35%	0	0.00%	17	3.79%	20	4.46%	5	1.12%
Asian	1	0.04%	105	4.51%	6	0.26%	64	2.75%	165	7.09%	41	1.76%
African American	48	0.11%	937	2.05%	44	0.10%	986	2.16%	1,322	2.89%	432	0.95%
White	61	0.10%	2,619	4.42%	68	0.11%	2,012	3.40%	1,342	2.27%	719	1.21%
Hispanic	3	0.05%	207	3.39%	1	0.02%	88	1.44%	249	4.07%	45	0.74%

Table 16

*Number and Percent of Students with Disabilities by ESY Service

Ages 3-21

October 31, 2003

	Grand Total	ESY	
		Total	Percent
Total State	113,760	9,836	8.6%
Allegany	1,648	178	10.8
Anne Arundel	10,512	971	9.2
Baltimore City	15,313	675	4.4
Edison Schools	216	0	0.0
Baltimore	14,005	1,278	9.1
Calvert	2,373	82	3.5
Caroline	709	3	0.4
Carroll	3,701	234	6.3
Cecil	2,554	67	2.6
Charles	2,489	128	5.1
Dorchester	570	10	1.8
Frederick	4,762	756	15.9
Garrett	731	30	4.1
Harford	6,103	259	4.2
Howard	5,070	1,060	20.9
Kent	339	62	18.3
Montgomery	17,334	2,142	12.4
Prince George's	15,098	1,297	8.6
Queen Anne's	1,037	67	6.5
St. Mary's	2,222	101	4.5
Somerset	359	11	3.1
Talbot	458	15	3.3
Washington	2,780	250	9.0
Wicomico	1,711	58	3.4
Worcester	765	3	0.4
Total Local Education Agencies	112,859	9,737	8.6
Department of Juvenile Services	180	0	0.0
Adult Corrections	97	0	0.0
Maryland School for the Blind	180	97	53.9
Maryland School for the Deaf	444	2	0.5
Total State Operated Programs	901	99	11.0

*Data may not reflect actual numbers or data may be incomplete. MSDE is working with local agencies to improve the accuracy of the data.

Table 17a

*Number and Percent of Students with Disabilities Placed by Their Parents in Private Schools
Ages 3-21
October 31, 2003

	Grand	Parent Placed		Receiving Special Education Service		*Only Related Service		*No Service	
	Total	Total	Percent	Total	Percent	Total	Percent	Total	Percent
Total State	112,859	1,423	1.26%	1,288	1.1%	17	0.0%	118	0.1%
Allegany	1,648	12	0.73%	12	0.7	0	0.0	0	0.0
Anne Arundel	10,512	164	1.56%	163	1.6	1	0.0	0	0.0
Baltimore City	15,313	161	1.05%	150	1.0	9	0.1	2	1.2
Edison Schools	216	0	0.00%	0	0.0	0	0.0	0	0.0
Baltimore	14,005	298	2.13%	295	2.1	3	0.0	0	0.0
Calvert	2,373	19	0.80%	6	0.3	0	0.0	13	68.4
Caroline	709	1	0.14%	1	0.1	0	0.0	0	0.0
Carroll	3,701	77	2.08%	70	1.9	0	0.0	7	9.1
Cecil	2,554	24	0.94%	21	0.8	0	0.0	3	12.5
Charles	2,489	34	1.37%	23	0.9	1	0.0	10	29.4
Dorchester	570	4	0.70%	3	0.5	0	0.0	1	25.0
Frederick	4,762	47	0.99%	39	0.8	0	0.0	8	17.0
Garrett	731	0	0.00%	0	0.0	0	0.0	0	0.0
Harford	6,103	133	2.18%	113	1.9	0	0.0	20	15.0
Howard	5,070	10	0.20%	4	0.1	0	0.0	6	60.0
Kent	339	6	1.77%	2	0.6	1	0.3	3	50.0
Montgomery	17,334	296	1.71%	265	1.5	2	0.0	29	9.8
Prince George's	15,098	60	0.40%	60	0.4	0	0.0	0	0.0
Queen Anne's	1,037	0	0.00%	0	0.0	0	0.0	0	0.0
St. Mary's	2,222	32	1.44%	28	1.3	0	0.0	4	12.5
Somerset	359	1	0.28%	1	0.3	0	0.0	0	0.0
Talbot	458	11	2.40%	1	0.2	0	0.0	10	90.9
Washington	2,780	9	0.32%	7	0.3	0	0.0	2	22.2
Wicomico	1,711	17	0.99%	17	1.0	0	0.0	0	0.0
Worcester	765	7	0.92%	7	0.9	0	0.0	0	0.0

*Data may not reflect actual numbers or data may be incomplete. MSDE is working with local agencies to improve the accuracy of the data.

Table 17b

*Number and Percent of Students with Disabilities Placed by Their Parents in Private Schools

Ages 3-5

October 31, 2003

	Grand	Parent Placed		Receiving Special Education Service		*Only Related Service		*No Service	
	Total	Total	Percent	Total	Percent	Total	Percent	Total	Percent
Total State	12,044	380	3.16%	368	3.1%	4	0.0%	8	0.1%
Allegany	146	2	1.37%	2	1.4	0	0.0	0	0.0
Anne Arundel	1,225	38	3.10%	38	3.1	0	0.0	0	0.0
Baltimore City	1,355	16	1.18%	14	1.0	1	0.1	1	6.3
Edison Schools	18	0	0.00%	0	0.0	0	0.0	0	0.0
Baltimore	1,725	168	9.74%	168	9.7	0	0.0	0	0.0
Calvert	215	2	0.93%	1	0.5	0	0.0	1	0.0
Caroline	72	0	0.00%	0	0.0	0	0.0	0	0.0
Carroll	429	12	2.80%	12	2.8	0	0.0	0	0.0
Cecil	261	6	2.30%	6	2.3	0	0.0	0	0.0
Charles	322	5	1.55%	3	0.9	1	0.3	1	20.0
Dorchester	58	3	5.17%	3	5.2	0	0.0	0	0.0
Frederick	430	1	0.23%	1	0.2	0	0.0	0	0.0
Garrett	76	0	0.00%	0	0.0	0	0.0	0	0.0
Harford	676	18	2.66%	15	2.2	0	0.0	3	16.7
Howard	750	0	0.00%	0	0.0	0	0.0	0	0.0
Kent	27	1	3.70%	1	3.7	0	0.0	0	0.0
Montgomery	1,811	76	4.20%	74	4.1	2	0.1	0	0.0
Prince George's	1,516	18	1.19%	18	1.2	0	0.0	0	0.0
Queen Anne's	118	0	0.00%	0	0.0	0	0.0	0	0.0
St. Mary's	253	5	1.98%	5	2.0	0	0.0	0	0.0
Somerset	28	0	0.00%	0	0.0	0	0.0	0	0.0
Talbot	63	2	3.17%	0	0.0	0	0.0	2	100.0
Washington	234	2	0.85%	2	0.9	0	0.0	0	0.0
Wicomico	149	2	1.34%	2	1.3	0	0.0	0	0.0
Worcester	87	3	3.45%	3	3.4	0	0.0	0	0.0

*Data may not reflect actual numbers or data may be incomplete. MSDE is working with local agencies to improve the accuracy of the data.

Table 18

*Number and Percent of Students with Disabilities with IEPs Older than 13 Months and Evaluations Which Need to be Updated
Ages 3-21
October 31, 2003

	Grand	IEPs Older than 13 Months		Evaluations Which Need to be Updated	
	Total	Total	Percent	Total	Percent
Total State	113,760	1,646	1.4%	5,002	4.4%
Allegany	1,648	3	0.2	21	1.3
Anne Arundel	10,512	198	1.9	199	1.9
Baltimore City	15,313	102	0.7	177	1.2
Edison Schools	216	4	1.9	6	2.8
Baltimore	14,005	0	0.0	93	0.7
Calvert	2,373	2	0.1	18	0.8
Caroline	709	0	0.0	0	0.0
Carroll	3,701	11	0.3	33	0.9
Cecil	2,554	3	0.1	28	1.1
Charles	2,489	21	0.8	207	8.3
Dorchester	570	0	0.0	2	0.4
Frederick	4,762	0	0.0	0	0.0
Garrett	731	1	0.1	1	0.1
Harford	6,103	0	0.0	0	0.0
Howard	5,070	24	0.5	21	0.4
Kent	339	0	0.0	0	0.0
Montgomery	17,334	0	0.0	2,740	15.8
Prince George's	15,098	1,216	8.1	1,357	9.0
Queen Anne's	1,037	23	2.2	26	2.5
St. Mary's	2,222	0	0.0	3	0.1
Somerset	359	0	0.0	0	0.0
Talbot	458	7	1.5	4	0.9
Washington	2,780	13	0.5	26	0.9
Wicomico	1,711	16	0.9	25	1.5
Worcester	765	0	0.0	7	0.9
Total Local Education Agencies	112,859	1,644	1.5	4,994	4.4
Department of Juvenile Services	180	32	17.8	13	7.2
Adult Corrections	97	2	2.1	6	6.2
Maryland School for the Blind	180	0	0.0	2	1.1
Maryland School for the Deaf	444	0	0.0	0	0.0
Total State Operated Programs	901	2	0.2	8	0.9

*Data may not reflect actual numbers or data may be incomplete. MSDE is working with local agencies to improve the accuracy of the data.

Table 19
Number of Students in Nonpublic Schools by Disability
October 31, 2003

NONPUBLIC SCHOOL	TOTAL	Mental Retardation	Hard of Hearing	Deaf	Speech/ Language	Visually Impaired	Emotionally Disturbed	Orthopedically Impaired	Other Health Impaired	Specific Learning Disabilities	Multiple Disabilities	Deaf/ Blind	Traumatic Brain Injury	Autism	Developmental Delay
GRAND TOTAL	4,313	175	7	3	462	0	1,836	50	166	290	696	0	33	495	100
ACCIDENT HEADSTART CTR	4	0	0	0	4	0	0	0	0	0	0	0	0	0	0
ACCOTINK	9	0	0	0	0	0	3	0	2	1	3	0	0	0	0
ALTERNATIVE ED PILOT PROJ	11	1	2	0	1	0	2	0	0	5	0	0	0	0	0
ARROW CENTERS	24	0	0	0	1	0	22	0	0	1	0	0	0	0	0
AU CLAIR	8	0	0	0	0	0	8	0	0	0	0	0	0	0	0
BALTIMORE ACADEMY	14	0	0	0	0	0	13	0	0	0	1	0	0	0	0
BANCROFT	3	1	0	0	0	0	0	0	0	0	0	0	0	2	0
BENEDICTINE	41	8	0	0	0	0	0	0	2	0	17	0	1	13	0
BENHAVEN	1	0	0	0	0	0	0	0	0	0	0	0	0	1	0
BENNINGTON	8	0	0	0	0	0	8	0	0	0	0	0	0	0	0
BERTELL ACADEMY OF PG	40	0	0	0	0	0	29	0	1	5	5	0	0	0	0
BRIGHTSIDE SCHOOL	1	0	0	0	0	0	1	0	0	0	0	0	0	0	0
CAMPHILL SPECIAL SCHOOL	2	0	0	0	0	0	0	0	0	0	1	0	0	1	0
CEDAR RIDGE	38	1	0	0	0	0	18	0	13	4	1	0	0	1	0
CENTER ON DEAFNESS	1	0	0	1	0	0	0	0	0	0	0	0	0	0	0
CHAMBERLAIN SCHOOL	1	0	0	0	0	0	1	0	0	0	0	0	0	0	0
CHELSEA SCHOOL	40	0	0	0	0	0	3	0	1	26	10	0	0	0	0
CHESAPEAKE YOUTH ACADEMY	2	0	0	0	0	0	0	0	0	0	2	0	0	0	0
CHILD FIND ANNE ARUNDEL	204	0	0	1	182	0	0	1	0	1	1	0	0	1	17
CHILDRENS CARE HOSPITAL	1	0	0	0	0	0	0	0	0	0	1	0	0	0	0
CHILDREN'S GUILD PG COUNTY	64	0	0	0	2	0	36	0	5	3	18	0	0	0	0
CHILDRENS GUILD AA CO	2	0	0	0	0	0	2	0	0	0	0	0	0	0	0
CHILDRENS GUILD BALTIMORE CITY	124	3	0	0	0	0	97	3	3	1	14	0	0	2	1
CHIMES	67	32	0	0	0	0	12	0	2	0	12	0	0	9	0
CHRIST CHURCH SCHOOL (PRI	1	0	0	0	1	0	0	0	0	0	0	0	0	0	0
COMMUNITY SCHOOL OF MD.	49	0	0	0	1	0	0	0	0	0	7	0	0	39	2
DESISTO	1	0	0	0	0	0	1	0	0	0	0	0	0	0	0
DEVEREAUX,GA.	1	0	0	0	0	0	1	0	0	0	0	0	0	0	0
DEVEREAUX,PA.	2	0	0	0	0	0	1	0	0	0	1	0	0	0	0
EAGLE HILL SCHOOL	1	0	0	0	0	0	0	0	0	1	0	0	0	0	0
EARLY LEARNING CENTER	2	0	0	0	2	0	0	0	0	0	0	0	0	0	0
EDGEMEADE	57	2	0	0	0	0	49	0	0	2	4	0	0	0	0
EPISCOPAL CTR. FOR CHILDR	17	0	0	0	1	0	13	0	1	0	2	0	0	0	0
FAMILY ADVOCACY	49	1	0	0	0	0	47	0	0	0	1	0	0	0	0
FLORENCE BERTELL ACADEMY	3	0	0	0	0	0	3	0	0	0	0	0	0	0	0
FORBUSH- MARGARET BRENT	13	0	0	0	0	0	0	0	0	0	0	0	0	13	0
FORBUSH BALTIMORE COUNTY	182	3	0	0	0	0	133	0	3	1	14	0	0	25	3
FOUNDATION INTERMEDIATE SCHOOL	72	0	0	0	0	0	57	1	3	2	9	0	0	0	0
FOUNDATION SCH OF MONTGOMERY	71	0	0	0	0	0	67	0	1	2	1	0	0	0	0
FOUNDATION SCHOOL OF ALEXANDRIA	7	0	0	0	0	0	7	0	0	0	0	0	0	0	0
FRIENDSHIP SCHOOL	1	0	0	0	0	0	0	0	0	0	1	0	0	0	0
FROST SCHOOL	41	0	0	0	0	0	31	0	2	1	5	0	0	2	0
GATEWAY	42	1	1	0	12	0	0	0	3	0	1	0	0	22	2
GOOD SHEPHERD	46	0	0	0	0	0	39	1	0	1	2	0	1	2	0
GRACE ACADEMY	2	0	0	0	1	0	0	0	1	0	0	0	0	0	0
GRACE LUTHERAN	1	0	0	0	1	0	0	0	0	0	0	0	0	0	0
GRAFTON, MD	21	1	0	0	0	0	1	0	0	0	5	0	0	14	0
GRAFTON,VA.	17	1	0	0	0	0	1	0	0	0	5	0	0	10	0
GROVE SCHOOL, CONN. ONP	1	0	0	0	0	0	1	0	0	0	0	0	0	0	0

Table 19 (continued)
 Number of Students in Nonpublic Schools by Disability
 October 31, 2003

NONPUBLIC SCHOOL	TOTAL	Mental Retardation	Hard of Hearing	Deaf	Speech/ Language	Visually Impaired	Emotionally Disturbed	Orthopedically Impaired	Other Health Impaired	Specific Learning Disabilities	Multiple Disabilities	Deaf/ Blind	Traumatic Brain Injury	Autism	Developmental Delay
HANNAH MORE AT SPHS	1	0	0	0	0	0	0	0	0	0	1	0	0	0	0
HANNAH MORE CENTER BALTIMORE COUNTY	130	0	0	0	0	0	64	0	8	6	22	0	2	28	0
HANNAH MORE- SEVERN RIVER	7	0	0	0	0	0	1	0	0	0	2	0	0	4	0
HARBOR SCHOOL, BALTIMORE	70	1	0	0	2	0	4	0	6	13	28	0	1	15	0
HARBOUR SCHOOL ANNE ARUNDEL	153	1	1	0	3	0	22	0	16	30	46	0	1	33	0
HATTIE SAMS LEARNING CTR	14	0	0	0	0	0	14	0	0	0	0	0	0	0	0
HEAD START HOWARD	1	0	0	0	1	0	0	0	0	0	0	0	0	0	0
HEADSTART BALTIMORE CITY	184	0	1	0	164	0	0	2	1	0	0	0	0	0	16
HEADSTART - ALLEGANY	21	0	0	0	12	0	0	0	0	0	0	0	0	0	9
HEADSTART - FRIENDSVILLE	2	0	0	0	1	0	0	0	0	0	1	0	0	0	0
HEADSTART OAK STREET	5	0	0	0	5	0	0	0	0	0	0	0	0	0	0
HEADSTART-JENNINGS	3	0	0	0	1	0	0	0	0	0	2	0	0	0	0
HERITAGE ACADEMY	1	0	0	0	1	0	0	0	0	0	0	0	0	0	0
HIGH ROAD	2	0	0	0	0	0	2	0	0	0	0	0	0	0	0
HIGH ROAD BALTIMORE COUNTY	109	2	0	0	0	0	57	1	11	28	7	0	0	3	0
HIGH ROAD - LAPLATA	16	0	0	0	0	0	15	0	0	0	1	0	0	0	0
HIGH ROAD ACADEMY HOWARD COUNTY	29	0	0	0	3	0	1	0	1	18	5	0	0	1	0
HIGH ROAD ACADEMY PG COUNTY	98	0	0	0	0	0	55	0	2	16	25	0	0	0	0
HILLHAVEN	1	0	0	0	0	0	0	0	0	0	0	0	0	1	0
HOWARD COMMUNITY COLLEGE	8	2	0	0	1	0	0	0	0	0	2	0	1	2	0
IVYMOUNT SCHOOLONPUBLIC	107	2	0	0	2	0	1	0	4	1	53	0	1	43	0
JEFFERSON SCHOOL ALLEGANY	73	0	0	0	1	0	60	0	3	1	6	0	0	2	0
JEFFERSON SCHOOL CARROLL	12	0	0	0	0	0	11	0	0	0	1	0	0	0	0
JEFFERSON SCHOOL FREDERICK	30	0	0	0	0	0	15	0	1	0	14	0	0	0	0
JFK INSTITUTE	336	18	1	0	8	0	65	10	23	15	80	0	19	97	0
KATHERINE THOMAS SCHOOL	1	0	0	0	1	0	0	0	0	0	0	0	0	0	0
KATHLEEN THOMAS TLC	10	0	0	0	1	0	0	0	1	3	3	0	0	2	0
KENNEDY KRIEGER	12	1	0	0	0	0	4	0	0	0	1	0	1	5	0
KINGSBURY DAY SCHOOL	23	0	0	0	2	0	2	0	3	10	5	0	0	0	1
KINGSBURY SCHOOL DC	1	0	0	0	0	0	0	0	0	1	0	0	0	0	0
KITZMILLER HEAD START	3	1	0	0	2	0	0	0	0	0	0	0	0	0	0
KOBA INSTITUTE (FOCUS POINT)	20	0	0	0	0	0	13	0	1	1	5	0	0	0	0
LAB SCHOOL DC	47	0	0	0	2	0	1	0	8	33	2	0	1	0	0
LAB SCHOOL OF BALTIMORE	1	0	0	0	0	0	0	0	0	1	0	0	0	0	0
LAUREL HALL	76	1	0	0	0	0	55	0	3	4	12	0	0	1	0
LEARNING TREE	4	1	0	0	0	0	0	0	0	1	1	0	0	1	0
LEARY OF PG COUNTY	28	2	0	0	1	0	14	0	0	1	10	0	0	0	0
LEARY SCHOOL VA	31	3	0	0	0	0	15	0	0	2	11	0	0	0	0
LIBERTY CHRISTIAN	1	0	0	0	0	0	0	0	0	1	0	0	0	0	0
LINWOOD	23	0	0	0	0	0	2	0	0	0	4	0	0	17	0
LITTLE FLOWER	2	0	0	0	2	0	0	0	0	0	0	0	0	0	0
LODGE SCHOOL	33	0	0	0	0	0	27	0	3	0	2	0	0	1	0
MARGARET S STERK	3	0	1	1	0	0	1	0	0	0	0	0	0	0	0
MONTESSORI OF WESTMINSTER	1	0	0	0	1	0	0	0	0	0	0	0	0	0	0
MPAC	64	0	0	0	0	0	0	0	1	0	1	0	1	14	47
NATIONAL CHILDREN'S CTR.	56	13	0	0	0	0	3	1	0	0	25	0	0	14	0
NEW DIRECTION	2	0	0	0	0	0	2	0	0	0	0	0	0	0	0
NEW FOUNDATION	28	1	0	0	0	0	26	0	1	0	0	0	0	0	0
NORBEL HOWARD	1	0	0	0	0	0	0	0	0	0	1	0	0	0	0
NORBEL BALTIMORE CITY	8	0	0	0	2	0	3	0	1	1	0	0	0	1	0
OAKMONT	35	0	0	0	0	0	33	0	1	0	0	0	1	0	0
OVERLOOK HEADSTART	5	1	0	0	4	0	0	0	0	0	0	0	0	0	0
PACT	2	0	0	0	0	0	0	0	0	0	1	0	0	0	1

Table 19 (continued)
 Number of Students in Nonpublic Schools by Disability
 October 31, 2003

NONPUBLIC SCHOOL	TOTAL	Mental Retardation	Hard of Hearing	Deaf	Speech/ Language	Visually Impaired	Emotionally Disturbed	Orthopedically Impaired	Other Health Impaired	Specific Learning Disabilities	Multiple Disabilities	Deaf/ Blind	Traumatic Brain Injury	Autism	Developmental Delay
PATHWAYS - HYATTSVILLE	4	0	0	0	0	0	1	0	0	1	2	0	0	0	0
PATHWAYS CTR.	108	0	0	0	0	0	78	0	0	4	24	0	0	2	0
PHILLIPS HOWARD	74	2	0	0	1	0	32	1	1	5	28	0	0	4	0
PHILLIPS VA	67	5	0	0	1	0	27	0	4	2	24	0	1	3	0
PINES TREATMENT CTR.	12	1	0	0	0	0	10	0	1	0	0	0	0	0	0
POTOMAC RIDGE	62	0	0	0	0	0	53	0	1	2	6	0	0	0	0
PRESCHOOL	19	0	0	0	16	0	0	1	0	1	1	0	0	0	0
PRESCHOOL CHILD FIND WASHINGTON CO	3	0	0	0	1	0	0	0	1	0	0	0	0	0	1
RADCLIFFE CREEK SCHOOL	2	0	0	0	0	0	0	0	0	2	0	0	0	0	0
REGINALD LOURIE	7	0	0	0	0	0	3	0	0	0	2	0	0	2	0
REGIONAL CTR.FOR INFANTS& CHILDREN	7	0	0	0	0	0	4	0	0	0	2	0	0	1	0
RICA BALTIMORE	89	0	0	0	0	0	78	0	1	4	6	0	0	0	0
RIDGE SCHOOL	8	0	0	0	0	0	7	0	0	0	1	0	0	0	0
SAINT JOHN SCHOOL	2	0	0	0	1	0	0	0	0	0	0	0	0	1	0
SALEM CHILDREN'S TRUST	15	1	0	0	0	0	9	0	1	0	4	0	0	0	0
SHOREHAVEN	15	3	0	0	0	0	0	0	0	0	11	0	0	1	0
ST. AUGUSTINE	1	0	0	0	1	0	0	0	0	0	0	0	0	0	0
ST. MARGARET'S SCHOOL	2	0	0	0	0	0	1	0	1	0	0	0	0	0	0
ST.COLETTA SCHOOL	43	4	0	0	0	0	0	0	1	0	16	0	0	22	0
ST.ELIZABETHS SCHOOL&HAB.	118	29	0	0	6	0	35	3	8	7	16	0	1	13	0
ST.JOHN'S CHILD DEV.CTR.,	2	0	0	0	0	0	0	0	0	0	0	0	0	2	0
STRAWBRIDGE SCHOOL	58	0	0	0	0	0	56	0	0	1	1	0	0	0	0
SUMMITT SCHOOL	18	0	0	0	0	0	0	0	1	10	7	0	0	0	0
TAYLOR MANOR HOSPITAL	5	0	0	0	0	0	5	0	0	0	0	0	0	0	0
TRINITY	1	0	0	0	1	0	0	0	0	0	0	0	0	0	0
UCP	51	15	0	0	0	0	0	25	0	0	11	0	0	0	0
VALLEY ACADEMY	4	0	0	0	0	0	1	0	1	2	0	0	0	0	0
VENDORING(AWAITING NP)	1	0	0	0	0	0	1	0	0	0	0	0	0	0	0
VILLA MARIA AT ST VINCENT	2	0	0	0	0	0	1	0	0	1	0	0	0	0	0
VILLA MARIA BALTIMORE COUNTY	113	0	0	0	1	0	106	0	2	3	1	0	0	0	0
VILLA MARIA/SEATON KEOUGH	9	0	0	0	0	0	7	0	0	0	2	0	0	0	0
WOODBURNE	14	0	0	0	1	0	11	0	0	1	1	0	0	0	0
WOODS SCHOOL	5	1	0	0	0	0	0	0	0	0	4	0	0	0	0
YOUTH IN TRANSITION BALTIMORE CITY	26	7	0	0	0	0	15	0	0	0	2	0	0	2	0
YOUTH IN TRANSITION SCHOOL BALTIMORE	2	2	0	0	0	0	0	0	0	0	0	0	0	0	0

MARYLAND SPECIAL EDUCATION EXIT DATA

JULY 1, 2002 - JUNE 30, 2003

Table 20
 Students with Disabilities by Exit Reason and LEA
 Ages 14 - 21
 July 2002 - June 2003

	Total	Returned to General Ed		Graduated				Reached Maximum Age		Deceased		Transferred				Dropped Out	
		General Ed	Percent	with Diploma	Percent	with Certificate	Percent	Age	Percent	Percent	Percent	Continuing Special Ed	Percent	Not Continuing Special Ed	Percent	Out	Percent
STATE TOTAL	10,044	1,375	13.7%	3,676	36.6%	521	5.2%	140	1.4%	39	0.4%	2,217	22.1%	453	4.5%	1,623	16.2%
Allegany	178	18	10.1%	62	34.8%	10	5.6%	6	3.4%	2	1.1%	25	14.0%	10	5.6%	45	25.3%
Anne Arundel	1,220	110	9.0%	502	41.1%	36	3.0%	33	2.7%	6	0.5%	302	24.8%	6	0.5%	225	18.4%
Baltimore City	1,948	278	14.3%	255	13.1%	119	6.1%	23	1.2%	13	0.7%	396	20.3%	161	8.3%	703	36.1%
Baltimore	1,300	199	15.3%	626	48.2%	36	2.8%	0	0.0%	3	0.2%	320	24.6%	0	0.0%	116	8.9%
Calvert	220	34	15.5%	95	43.2%	4	1.8%	0	0.0%	2	0.9%	50	22.7%	3	1.4%	32	14.5%
Caroline	63	4	6.3%	25	39.7%	6	9.5%	2	3.2%	0	0.0%	14	22.2%	1	1.6%	11	17.5%
Carroll	285	44	15.4%	171	60.0%	18	6.3%	3	1.1%	0	0.0%	17	6.0%	3	1.1%	29	10.2%
Cecil	222	10	4.5%	65	29.3%	19	8.6%	7	3.2%	1	0.5%	61	27.5%	10	4.5%	49	22.1%
Charles	369	129	34.9%	91	24.7%	5	1.4%	5	1.4%	0	0.0%	95	25.7%	0	0.0%	44	11.9%
Dorchester	50	6	12.0%	15	30.0%	4	8.0%	0	0.0%	0	0.0%	10	20.0%	6	12.0%	9	18.0%
Frederick	392	85	21.7%	181	46.2%	14	3.6%	0	0.0%	1	0.3%	56	14.3%	18	4.6%	37	9.4%
Garrett	81	9	11.1%	17	21.0%	6	7.4%	0	0.0%	1	1.2%	30	37.0%	2	2.5%	16	19.8%
Harford	442	83	18.8%	220	49.8%	22	5.0%	6	1.4%	1	0.2%	41	9.3%	12	2.7%	57	12.9%
Howard	460	36	7.8%	231	50.2%	15	3.3%	8	1.7%	2	0.4%	142	30.9%	2	0.4%	24	5.2%
Kent	34	2	5.9%	17	49.9%	2	5.9%	0	0.0%	0	0.0%	5	14.7%	0	0.3%	8	23.5%
Montgomery	1,225	193	15.8%	594	48.5%	70	5.7%	12	1.0%	0	0.0%	250	20.4%	76	6.2%	30	2.4%
Prince George's	524	15	2.9%	126	24.0%	61	11.6%	1	0.2%	3	0.6%	194	37.0%	36	6.9%	88	16.8%
Queen Anne's	35	2	5.7%	28	80.0%	4	11.4%	0	0.0%	0	0.0%	1	2.9%	0	0.0%	0	0.0%
St. Mary's	181	19	10.5%	77	42.5%	10	5.5%	0	0.0%	0	0.0%	46	25.4%	0	0.1%	29	16.0%
Somerset	48	7	14.6%	14	29.2%	7	14.6%	0	0.0%	0	0.0%	18	37.5%	0	0.0%	2	4.2%
Talbot	62	15	24.2%	9	14.5%	7	11.3%	3	4.8%	0	0.0%	9	14.5%	2	3.2%	17	27.4%
Washington	170	35	20.6%	102	60.0%	21	12.4%	1	0.6%	0	0.0%	1	0.6%	4	2.4%	6	3.5%
Wicomico	181	11	6.1%	74	40.9%	5	2.8%	13	7.2%	2	1.1%	43	23.8%	2	1.1%	31	17.1%
Worcester	100	16	16.0%	52	51.9%	6	6.0%	0	0.0%	1	1.0%	18	18.0%	0	0.1%	7	7.0%
LEA TOTAL	9,791	1,360	13.9%	3,649	37.3%	507	5.2%	123	1.3%	38	0.4%	2,144	21.9%	355	26.1%	1,615	16.5%
Adult Corrections	49	1	2.0%	1	2.0%	0	0.0%	17	34.7%	0	0.0%	10	20.4%	14	28.6%	6	12.2%
Department of Juvenile Services	149	10	6.7%	4	2.7%	0	0.0%	0	0.0%	0	0.0%	50	33.6%	84	56.4%	1	0.7%
MSB	24	4	16.6%	4	16.6%	14	58.1%	0	0.0%	1	4.1%	1	4.1%	0	0.4%	0	0.0%
MSD	31	0	0.0%	18	57.9%	0	0.0%	0	0.0%	0	0.0%	12	38.6%	0	0.3%	1	3.2%
SOP TOTAL	253	15	5.9%	27	10.7%	14	5.5%	17	6.7%	1	0.4%	73	28.8%	98	38.8%	8	3.2%

Figure 6
Students with Disabilities
by Exit Reason
July 2002-June 2003

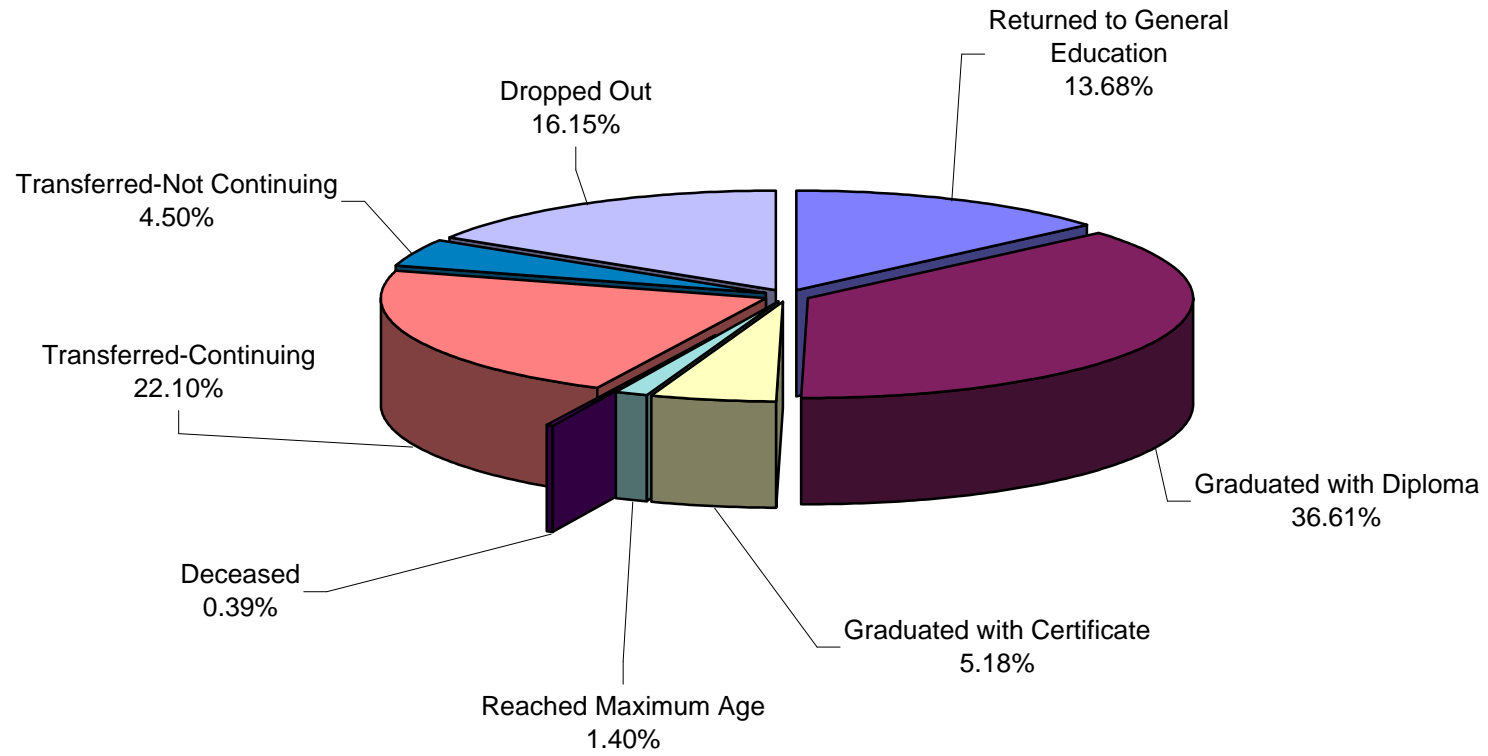


Table 21
 Students with Disabilities by Exit Reason and Disability
 Ages 14 - 21
 July 2002 - June 2003

	Total	Returned to General Ed		Graduated				Reached Maximum Age		Deceased		Transferred				Dropped Out	
		Number	Percent	with Diploma		with Certificate		Number	Percent	Number	Percent	Continuing		Not Known to be Continuing		Number	Percent
				Number	Percent	Number	Percent					Number	Percent	Number	Percent		
State Total	10,044	1,375	13.69%	3,676	36.60%	521	5.19%	135	1.34%	39	0.39%	2,222	22.12%	453	4.51%	1,623	16.16%
Mentally Retarded	780	14	18.85%	147	18.85%	204	26.15%	65	8.33%	3	0.38%	181	23.21%	35	4.49%	131	16.79%
Hearing Impaired	60	6	58.33%	35	58.33%	3	5.00%	1	1.67%	0	0.00%	10	16.67%	2	3.33%	3	5.00%
Deaf	51	1	62.75%	32	62.75%	0	0.00%	0	0.00%	0	0.00%	17	33.33%	0	0.00%	1	1.96%
Speech/Language	695	253	34.82%	242	34.82%	13	1.87%	2	0.29%	1	0.14%	91	13.09%	24	3.45%	69	9.93%
Visually Impaired	55	3	43.64%	24	43.64%	13	23.64%	0	0.00%	1	1.82%	9	16.36%	1	1.82%	4	7.27%
Emotionally Disturbed	1,747	173	25.13%	439	25.13%	50	2.86%	7	0.40%	11	0.63%	550	31.48%	139	7.96%	378	21.64%
Orthopedically Impaired	34	4	67.65%	23	67.65%	1	2.94%	2	5.88%	1	2.94%	3	8.82%	0	0.00%	0	0.00%
Other Health Impaired	687	82	41.05%	282	41.05%	18	2.62%	7	1.02%	4	0.58%	176	25.62%	22	3.20%	96	13.97%
Specific Learning Disability	5,400	817	42.20%	2,279	42.20%	107	1.98%	10	0.19%	9	0.17%	1,074	19.89%	214	3.96%	890	16.48%
Deaf/Blind	2	0	50.00%	1	50.00%	1	50.00%	0	0.00%	0	0.00%	0	0.00%	0	0.00%	0	0.00%
Multiple Handicap	391	19	29.16%	114	29.16%	88	22.51%	31	7.93%	9	2.30%	79	20.20%	9	2.30%	42	10.74%
Autism	48	3	37.50%	18	37.50%	5	10.42%	1	2.08%	0	0.00%	10	20.83%	5	10.42%	6	12.50%
Traumatic Brain Injury	94	0	42.55%	40	42.55%	18	19.15%	9	9.57%	0	0.00%	22	23.40%	2	2.13%	3	3.19%
Developmental Delay	0	0	0.00%	0	0.00%	0	0.00%	0	0.00%	0	0.00%	0	0.00%	0	0.00%	0	0.00%

Maryland Students with Disabilities Suspension Data

Table 22
 Extended Suspensions: Number and Percentage of Suspensions
 Maryland Public Schools
 2002-03

	Number and Percentage of All Students Suspended			Number and Percentage of Students with Disabilities Suspended			Number and Percentage of Non-disabled Students Suspended		
	Total 9/30/2002 Enrollment	Suspended for More Than 10 Days	Percent	12/1/2002 SSIS Count*	Suspended for More Than 10 Days	Percent	Total	Suspended for More Than 10 Days	Percent
Total State	866,743	4,393	0.51%	112,184	1,085	0.97%	754,559	3,308	0.44%
Allegany	10,128	0	0.00%	1,781	0	0.00%	8,347	0	0.00%
Anne Arundel	74,787	152	0.20%	10,695	46	0.43%	64,092	106	0.17%
Baltimore City	94,031	1,752	1.86%	15,183	582	3.83%	78,848	1,170	1.48%
Edison Schools	2,199	1	0.05%	231	0	0.00%	1,968	1	0.05%
Baltimore	108,297	715	0.66%	13,559	102	0.75%	94,738	613	0.65%
Calvert	17,153	9	0.05%	2,315	0	0.00%	14,838	9	0.06%
Caroline	5,535	0	0.00%	722	0	0.00%	4,813	0	0.00%
Carroll	28,430	0	0.00%	3,723	0	0.00%	24,707	0	0.00%
Cecil	16,203	90	0.56%	2,593	12	0.46%	13,610	78	0.57%
Charles	24,794	53	0.21%	2,504	10	0.40%	22,290	43	0.19%
Dorchester	4,817	11	0.23%	591	1	0.17%	4,226	10	0.24%
Frederick	38,559	34	0.09%	4,728	4	0.08%	33,831	30	0.09%
Garrett	4,833	4	0.08%	721	1	0.14%	4,112	3	0.07%
Harford	40,252	347	0.86%	6,079	96	1.58%	34,173	251	0.73%
Howard	47,197	59	0.13%	5,005	8	0.16%	42,192	51	0.12%
Kent	2,629	5	0.19%	346	0	0.00%	2,283	5	0.22%
Montgomery	138,983	296	0.21%	17,013	66	0.39%	121,970	230	0.19%
Prince George's	135,439	784	0.58%	15,076	135	0.90%	120,363	649	0.54%
Queen Anne's	7,523	8	0.11%	995	0	0.00%	6,528	8	0.12%
St. Mary's	16,110	17	0.11%	2,144	0	0.00%	13,966	17	0.12%
Somerset	2,978	0	0.00%	361	0	0.00%	2,617	0	0.00%
Talbot	4,498	4	0.09%	467	1	0.21%	4,031	3	0.07%
Washington	20,102	52	0.26%	2,829	21	0.74%	17,273	31	0.18%
Wicomico	14,395	0	0.00%	1,663	0	0.00%	12,732	0	0.00%
Worcester	6,871	0	0.00%	860	0	0.00%	6,011	0	0.00%

* For more information see publication 'Suspension, Expulsions and Health Related Exclusions Maryland Public Schools' on the MSDE web site

Table 23
Multiple Suspensions - Summing to Greater than Ten Days
Maryland Public Schools
2002-03

	Number and Percentage of All Students Suspended			Number and Percentage of Students with Disabilities Suspended			Number and Percentage of Non-disabled Students Suspended		
	Total Suspended for 9/30/2002 Enrollment	More Than 10 Days	Percent	12/1/2002 Suspended for SSIS Count*	More Than 10 Days	Percent	Total Suspended for	More Than 10 Days	Percent
Total State	866,743	6,935	0.80%	112,184	1,448	1.29%	754,559	5,436	0.72%
Allegany	10,128	60	0.59%	1,781	9	0.51%	8,347	0	0.00%
Anne Arundel	74,787	489	0.65%	10,695	67	0.63%	64,092	422	0.66%
Baltimore City	94,031	1,307	1.39%	15,183	231	1.52%	78,848	1,076	1.36%
Edison Schools Baltimore	2,199	1	0.05%	231	0	0.00%	1,968	1	0.05%
Baltimore	108,297	748	0.69%	13,559	175	1.29%	94,738	573	0.60%
Calvert	17,153	130	0.76%	2,315	35	1.51%	14,838	95	0.64%
Caroline	5,535	40	0.72%	722	8	1.11%	4,813	32	0.66%
Carroll	28,430	91	0.32%	3,723	24	0.64%	24,707	67	0.27%
Cecil	16,203	254	1.57%	2,593	20	0.77%	13,610	234	1.72%
Charles	24,794	184	0.74%	2,504	28	1.12%	22,290	156	0.70%
Dorchester	4,817	124	2.57%	591	32	5.41%	4,226	92	2.18%
Frederick	38,559	235	0.61%	4,728	63	1.33%	33,831	172	0.51%
Garrett	4,833	7	0.14%	721	2	0.28%	4,112	5	0.12%
Harford	40,252	591	1.47%	6,079	192	3.16%	34,173	399	1.17%
Howard	47,197	95	0.20%	5,005	11	0.22%	42,192	84	0.20%
Kent	2,629	41	1.56%	346	10	2.89%	2,283	31	1.36%
Montgomery	138,983	358	0.26%	17,013	118	0.69%	121,970	240	0.20%
Prince George's	135,439	1,422	1.05%	15,076	271	1.80%	120,363	1,151	0.96%
Queen Anne's	7,523	31	0.41%	995	9	0.90%	6,528	22	0.34%
St. Mary's	16,110	190	1.18%	2,144	20	0.93%	13,966	170	1.22%
Somerset	2,978	71	2.38%	361	7	1.94%	2,617	64	2.45%
Talbot	4,498	31	0.69%	467	8	1.71%	4,031	23	0.57%
Washington	20,102	28	0.14%	2,829	6	0.21%	17,273	22	0.13%
Wicomico	14,395	351	2.44%	1,663	84	5.05%	12,732	267	2.10%
Worcester	6,871	56	0.82%	860	18	2.09%	6,011	38	0.63%

*Source: Maryland Special Education Census Data, December 1, 2002, Table 1

NOTE: Students who were disabled at the time of one suspension but not at the time of another suspension may be included in the all student column but may not be included in the disabled and/or non-disabled columns.

* For more information see publication 'Suspension, Expulsions and Health Related Exclusions Maryland Public Schools' on the MSDE web site

MARYLAND INFANTS AND TODDLERS PROGRAM
PART C DATA
as of 12/1/2003

Table 24
Part C Child Report
as of 12/1/03

Jurisdiction	Total # of Children Receiving Early Intervention Services as of 12/1/03			Total Snapshot (as of 12/1/03)	Total # of Children Receiving Early Intervention Services Annually	Total # of Children Referred to Local Infants & Toddlers Programs Annually
	Birth to One	One to Two	Two to Three		Annual Count (from 12/1/02 to 12/1/03)	Referral Count (from 12/1/02 to 12/1/03)
Total State	763	1,851	3,160	5,774	11,001	10,236
Allegany	19	28	45	92	166	148
Anne Arundel	49	152	313	514	969	925
Baltimore City	124	266	378	768	1,396	1,194
Baltimore	75	254	474	803	1,619	1,837
Calvert	11	13	47	71	142	105
Caroline	4	4	15	23	52	48
Carroll	30	45	74	149	300	331
Cecil	14	18	34	66	123	123
Charles	27	50	55	132	213	230
Dorchester	16	21	16	53	85	60
Frederick	31	71	118	220	420	418
Garrett	5	6	10	21	41	36
Harford	24	76	167	267	545	483
Howard	42	88	184	314	588	651
Kent	1	1	1	3	11	16
Montgomery	175	402	673	1250	2,290	1,877
Prince George's	77	219	377	673	1,310	1,105
Queen Anne's	3	21	16	40	81	70
Somerset	1	2	4	7	16	23
St. Mary's	13	31	39	83	171	166
Talbot	4	13	16	33	71	56
Washington	10	44	50	104	219	173
Wicomico	5	20	44	69	132	114
Worcester	3	6	10	19	41	47

Figure 7
Part C Eligibility
for 12/1/03

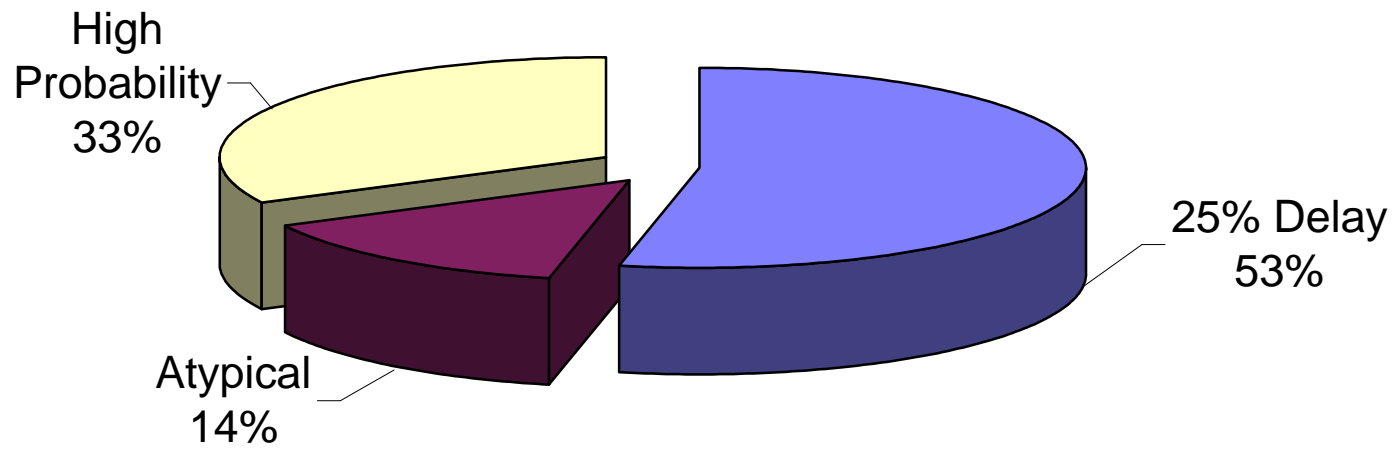


Table 25

Transition Summary Report 12/1/02 to 12/1/03

Transitioned at Age 3	IEP Meeting at least 90 days prior to 3rd birthday	IEP Meeting at least 90 days prior to 3rd birthday and PartB eligible	IEP Meeting at least 90 days prior to 3rd birthday and PartB eligible and had Ref. to Community Service	IEP Meeting at least 90 days prior to 3rd birthday and NOT PartB eligible	IEP Meeting at least 90 days prior to 3rd birthday and NOT PartB eligible and had Ref. to Community Service	Meeting held but not at least 90 days prior to 3rd birthday	Meeting held but not at least 90 days prior to 3rd birthday and Part B Eligible	Meeting held but not at least 90 days prior to 3rd birthday due to Referral within 90 days	Meeting held but not at least 90 days prior to 3rd birthday due to Parent choice	Parent Declined to Consider Eligibility in Part B	No IEP Meeting date	No IEP Meeting Date and no reason entered	
Total	3080	775	665	389	94	76	1785	1579	20	30	26	520	457
Allegany	39	29	25	17	4	3	10	8	0	0	0	0	0
Anne Arundel	280	130	129	17	1	1	139	138	0	0	0	11	11
Baltimore City	394	82	49	29	32	27	265	204	3	3	5	47	43
Baltimore County	514	67	56	22	10	7	296	251	5	4	1	151	149
Calvert	42	8	5	5	3	3	32	29	0	0	0	2	2
Caroline	14	8	7	6	1	1	5	4	0	0	0	1	1
Carroll	78	12	5	4	1	0	33	16	2	0	1	33	32
Cecil	38	18	18	16	0	0	20	19	0	0	0	0	0
Charles	49	9	8	0	1	0	38	33	0	0	0	2	2
Dorchester	17	13	13	12	0	0	4	4	0	0	0	0	0
Frederick	105	15	14	7	1	1	75	67	1	4	0	15	15
Garrett	12	9	7	4	0	0	2	2	1	0	0	1	1
Harford	161	13	13	8	0	0	144	127	0	2	2	4	1
Howard	169	84	78	24	1	1	81	77	0	6	0	4	4
Kent	4	1	0	0	1	1	3	3	0	1	0	0	0
Montgomery	602	19	9	2	10	5	361	329	5	8	15	222	171
Prince George's	379	150	149	148	0	0	215	210	1	0	1	14	13
Queen Anne's	14	4	4	4	0	0	6	6	0	0	0	4	4
Somerset	2	0	0	0	0	0	0	0	0	0	0	2	2
St. Mary's	38	15	14	3	1	0	20	18	1	0	0	3	3
Talbot	20	9	8	7	1	1	10	10	0	0	0	1	1
Washington	51	43	21	21	22	21	7	7	0	0	0	1	1
Wicomico	43	28	24	24	4	4	14	12	1	2	1	1	0
Worcester	15	9	9	9	0	0	5	5	0	0	0	1	1