

## Section 13. Student Characteristics

### Summary Statistics

Students' scale score means and standard deviations are presented in Table 13.1. Results from online and paper test-takers were pooled for the analyses. All results are based on the final Research files sent to MSDE.

**Table 13.1** MD Mod-HSA Mean Scale Scores by Content Area and Test Administration

Content Area	October			January			April			May			Summer		
	N	Mean	SD	N	Mean	SD	N	Mean	SD	N	Mean	SD	N	Mean	SD
Algebra	1,696	365.8	46.0	2,535	363.0	45.8	513	363.8	47.1	4,291	362.2	51.2	254	362.9	49.7
Biology	1,271	362.9	44.5	1,961	364.4	43.4	564	364.7	42.1	2,800	366.1	43.1	218	367.9	46.2
English	1,698	360.7	40.3	2,377	361.7	37.8	570	362.1	36.2	3,291	358.3	40.5	240	362.4	37.4
Government	1,381	359.4	47.2	2,000	356.0	46.9	462	357.0	45.9	2,950	361.5	50.0	221	359.0	46.8

The results presented in Tables 13.2 to 13.3 are based on the combined results for students who took the tests in October 2008 and January, April, May, and Summer 2009. The mean scale scores are presented for the years 2008 and 2009 by content area in Table 13.2. Table 13.3 presents the passing rates for these years.

**Table 13.2** MD Mod-HSA Mean Scale Scores by Content Area and Test Year

Content Area	2008	2009
Algebra	360.1	363.2
Biology	360.2	365.0
English	353.2	360.2
Government	357.2	359.2

**Table 13.3** MD Mod-HSA Percentage Passing Rates (Proficient + Advanced) by Content Area and Test Year

Content Area	2008	2009
Algebra	9.8	9.2
Biology	16.1	14.5
English	10.4	12.2
Government	19.9	20.3

The Algebra and English tests are used for the high school mathematics and English/language arts components of the MSDE Adequate Yearly Progress report as required

under the NCLB Act. Beginning with the January 2008 administration, Biology was used for the NCLB science component. Table 13.4 presents the percentage of Algebra, English, and Biology students classified as Basic, Proficient, and Advanced in 2009. Figures 13.1 through 13.4 show the distribution of scale scores for the May 2009 administration for each content area.

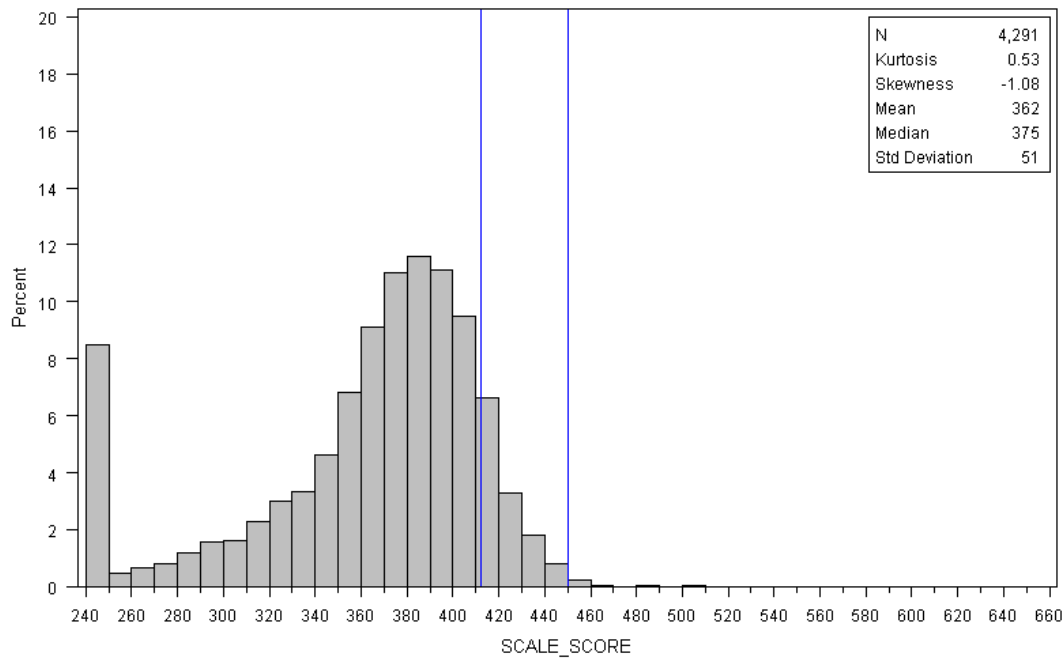
**Table 13.4** MD Mod-HSA Percentage of Students in Each Performance Category by Content Area

Content Area*	Basic	Proficient	Advanced
Algebra	90.8	8.9	0.4
Biology	85.5	14.2	0.3
English	87.8	11.7	0.6

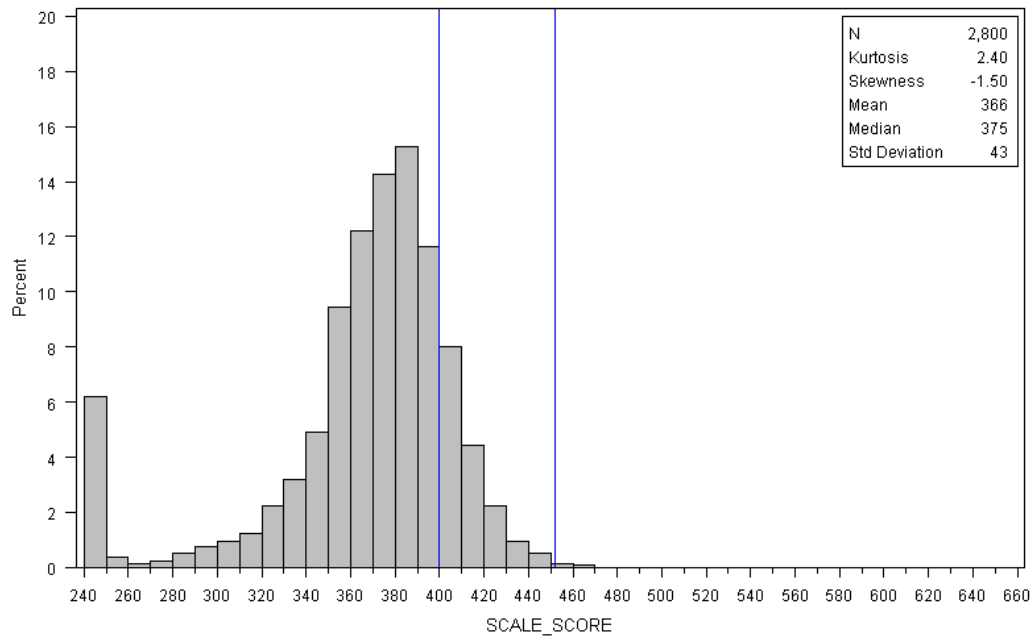
\*Government does not have an Advanced cut-score and therefore is not included in this table.

Summary statistics for all students and for subgroups based on gender, special education programs, ethnicity, and English language fluency are presented in Tables 13.5 through 13.28. The tables include the number of students tested for whom valid scores were available, mean scale scores, and standard deviations of scale scores. In addition, raw score reliabilities are provided for the overall group of examinees and for subgroups.

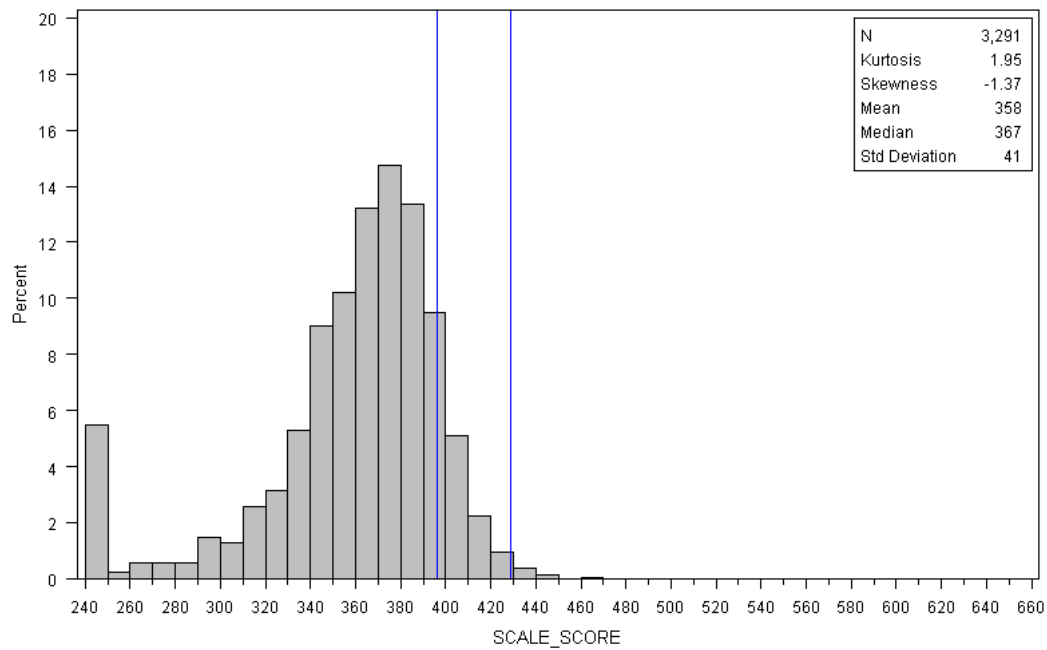
**Figure 13.1** Histogram of Total Scale Scores for MD Mod-HSA May 2009 Algebra



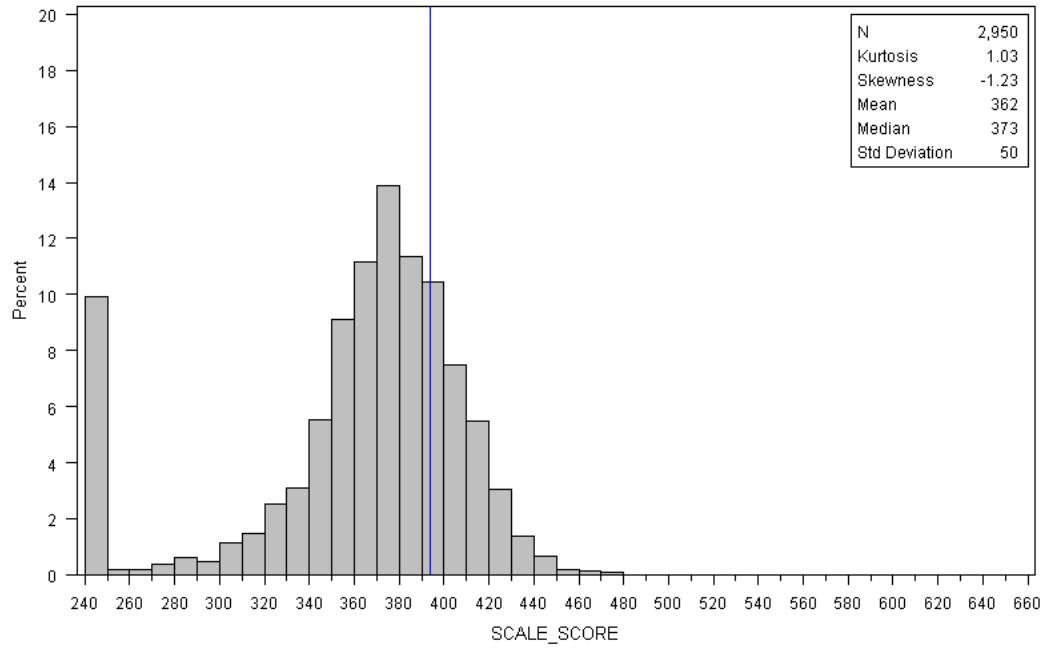
**Figure 13.2** Histogram of Total Scale Scores for MD Mod-HSA May 2009 Biology



**Figure 13.3** Histogram of Total Scale Scores for MD Mod-HSA May 2009 English



**Figure 13.4** Histogram of Total Scale Scores for MD Mod-HSA May 2009 Government



**Table 13.5** Summary Statistics for Algebra: MD Mod-HSA October 2008 Form

		Forms 108, 308				
		Mean	SD	N	%	Alpha
Overall		365.8	46.0	1,696	100.0	0.75
Gender						
	Male	367.2	45.8	1,034	61.0	0.76
	Female	363.4	46.3	654	38.6	0.72
	Missing	*	*	8	0.5	*
Special Education						
	Yes	363.6	47.6	847	49.9	0.75
	No	368.1	44.3	845	49.8	0.75
	Exited	*	*	0	0.0	*
	Exited and placed in 504 <sup>a</sup>	*	*	0	0.0	*
	504	*	*	4	0.2	*
Ethnicity						
	American Indian	*	*	2	0.1	*
	Asian/Pacific Islander	*	*	20	1.2	*
	African American	358.3	48.7	1,019	60.1	0.72
	White	379.0	36.3	561	33.1	0.76
	Hispanic	364.3	50.1	80	4.7	0.76
	Missing	*	*	14	0.8	*
Limited English Proficient						
	Yes	*	*	4	0.2	*
	No	365.9	45.9	1,691	99.7	0.75
	Exited <sup>b</sup>	*	*	1	0.1	*

\* Statistics not reported for sample size less than 50 ( $N < 50$ ).

<sup>a</sup> A 504 plan is a legal document falling under the provisions of the Rehabilitation Act of 1973 that provides a program of instructional services to assist students with special needs who are in a regular education setting.

<sup>b</sup> LEP Exited indicates students who have exited English language acquisition services.

**Table 13.6** Summary Statistics for Algebra: MD Mod-HSA January 2009 Form

		Form 209				Alpha
		Mean	SD	N	%	
Overall		363.0	45.8	2,535	100.0	0.74
Gender						
	Male	363.8	46.1	1,558	61.5	0.75
	Female	361.4	45.3	957	37.8	0.71
	Missing	*	*	20	0.8	*
Special Education						
	Yes	363.9	45.1	1,629	64.3	0.74
	No	361.4	46.8	899	35.5	0.74
	Exited	*	*	0	0.0	*
	Exited and placed in 504 <sup>a</sup>	*	*	0	0.0	*
	504	*	*	7	0.3	*
Ethnicity						
	American Indian	*	*	15	0.6	*
	Asian/Pacific Islander	*	*	27	1.1	*
	African American	356.9	47.6	1,619	63.9	0.72
	White	375.8	38.9	728	28.7	0.75
	Hispanic	369.2	40.5	110	4.3	0.70
	Missing	*	*	36	1.4	*
Limited English Proficient						
	Yes	*	*	5	0.2	*
	No	363.0	45.8	2,525	99.6	0.74
	Exited <sup>b</sup>	*	*	5	0.2	*

\* Statistics not reported for sample size less than 50 (N < 50).

<sup>a</sup> A 504 plan is a legal document falling under the provisions of the Rehabilitation Act of 1973 that provides a program of instructional services to assist students with special needs who are in a regular education setting.

<sup>b</sup> LEP Exited indicates students who have exited English language acquisition services.

**Table 13.7** Summary Statistics for Algebra: MD Mod-HSA April 2009 Form

		Form 209				Alpha
		Mean	SD	N	%	
Overall		363.8	47.1	513	100.0	0.75
Gender						
	Male	363.0	48.3	322	62.8	0.75
	Female	365.0	45.6	186	36.3	0.76
	Missing	*	*	5	1.0	*
Special Education						
	Yes	361.5	47.1	417	81.3	0.71
	No	373.4	46.1	94	18.3	0.83
	Exited	*	*	0	0.0	*
	Exited and placed in 504 <sup>a</sup>	*	*	0	0.0	*
	504	*	*	2	0.4	*
Ethnicity						
	American Indian	*	*	3	0.6	*
	Asian/Pacific Islander	*	*	6	1.2	*
	African American	359.5	49.0	381	74.3	0.75
	White	380.6	35.9	90	17.5	0.73
	Hispanic	*	*	28	5.5	*
	Missing	*	*	5	1.0	*
Limited English Proficient						
	Yes	*	*	0	0.0	*
	No	363.7	47.1	511	99.6	0.75
	Exited <sup>b</sup>	*	*	2	0.4	*

\* Statistics not reported for sample size less than 50 ( $N < 50$ ).

<sup>a</sup> A 504 plan is a legal document falling under the provisions of the Rehabilitation Act of 1973 that provides a program of instructional services to assist students with special needs who are in a regular education setting.

<sup>b</sup> LEP Exited indicates students who have exited English language acquisition services.

**Table 13.8** Summary Statistics for Algebra: MD Mod-HSA May 2009 Forms

		Forms 109, 509				
		Mean	SD	N	%	Alpha
Overall		362.2	51.2	4,291	100.0	0.78
Gender						
	Male	363.3	51.2	2,794	65.1	0.79
	Female	360.0	51.2	1,465	34.1	0.77
	Missing	*	*	32	0.8	*
Special Education						
	Yes	363.3	49.9	3,267	76.1	0.77
	No	358.9	55.1	994	23.2	0.80
	Exited	*	*	10	0.2	*
	Exited and placed in 504 <sup>a</sup>	*	*	0	0.0	*
	504	*	*	20	0.5	*
Ethnicity						
	American Indian	*	*	16	0.4	*
	Asian/Pacific Islander	376.3	49.2	56	1.3	0.79
	African American	354.9	53.2	2,741	63.9	0.76
	White	377.1	43.5	1,058	24.7	0.79
	Hispanic	371.0	45.7	373	8.7	0.77
	Missing	*	*	47	1.1	*
Limited English Proficient						
	Yes	*	*	25	0.6	*
	No	362.1	51.3	4,226	98.5	0.78
	Exited <sup>b</sup>	*	*	40	0.9	*

\* Statistics not reported for sample size less than 50 ( $N < 50$ ).

<sup>a</sup> A 504 plan is a legal document falling under the provisions of the Rehabilitation Act of 1973 that provides a program of instructional services to assist students with special needs who are in a regular education setting.

<sup>b</sup> LEP Exited indicates students who have exited English language acquisition services.



**Table 13.9** Summary Statistics for Algebra: MD Mod-HSA Summer 2009 Forms

	Forms 309, 609					Forms 409, 709				
	Mean	SD	N	%	Alpha	Mean	SD	N	%	Alpha
Overall	361.7	46.2	192	100.0	0.75	366.5	59.4	62	100.0	0.86
Gender										
Male	358.6	49.9	117	60.9	0.76	*	*	39	62.9	*
Female	366.6	39.6	75	39.1	0.73	*	*	23	37.1	*
Missing	*	*	0	0.0	*	*	*	0	0.0	*
Special Education										
Yes	368.7	48.5	51	26.6	0.78	*	*	13	21.0	*
No	359.2	45.2	141	73.4	0.73	*	*	49	79.0	*
Exited	*	*	0	0.0	*	*	*	0	0.0	*
Exited and placed in 504 <sup>a</sup>	*	*	0	0.0	*	*	*	0	0.0	*
504	*	*	0	0.0	*	*	*	0	0.0	*
Ethnicity										
American Indian	*	*	0	0.0	*	*	*	2	3.2	*
Asian/Pacific Islander	*	*	1	0.5	*	*	*	0	0.0	*
African American	358.3	44.5	130	67.7	0.69	*	*	39	62.9	*
White	*	*	46	24.0	*	*	*	19	30.6	*
Hispanic	*	*	10	5.2	*	*	*	1	1.6	*
Missing	*	*	5	2.6	*	*	*	1	1.6	*
Limited English Proficient										
Yes	*	*	1	0.5	*	*	*	0	0.0	*
No	361.5	46.2	191	99.5	0.75	366.5	59.4	62	100.0	0.86
Exited <sup>b</sup>	*	*	0	0.0	*	*	*	0	0.0	*

\* Statistics not reported for sample size less than 50 (N < 50).

<sup>a</sup> A 504 plan is a legal document falling under the provisions of the Rehabilitation Act of 1973 that provides a program of instructional services to assist students with special needs who are in a regular education setting.

<sup>b</sup> LEP Exited indicates students who have exited English language acquisition services.

**Table 13.10** Summary Statistics for Biology: MD Mod-HSA October 2008 Forms

		Forms 108, 308				
		Mean	SD	N	%	Alpha
Overall		362.9	44.5	1,271	100.0	0.67
Gender						
	Male	362.0	45.8	779	61.3	0.67
	Female	364.6	41.7	487	38.3	0.66
	Missing	*	*	5	0.4	*
Special Education						
	Yes	361.0	45.7	682	53.7	0.66
	No	365.2	42.8	586	46.1	0.68
	Exited	*	*	0	0.0	*
	Exited and placed in 504 <sup>a</sup>	*	*	0	0.0	*
	504	*	*	3	0.2	*
Ethnicity						
	American Indian	*	*	2	0.2	*
	Asian/Pacific Islander	*	*	11	0.9	*
	African American	355.8	47.0	794	62.5	0.68
	White	375.7	35.7	399	31.4	0.62
	Hispanic	376.7	34.2	60	4.7	0.61
	Missing	*	*	5	0.4	*
Limited English Proficient						
	Yes	*	*	2	0.2	*
	No	362.8	44.5	1,268	99.8	0.67
	Exited <sup>b</sup>	*	*	1	0.1	*

\* Statistics not reported for sample size less than 50 (N < 50).

<sup>a</sup> A 504 plan is a legal document falling under the provisions of the Rehabilitation Act of 1973 that provides a program of instructional services to assist students with special needs who are in a regular education setting.

<sup>b</sup> LEP Exited indicates students who have exited English language acquisition services.

**Table 13.11** Summary Statistics for Biology: MD Mod-HSA January 2009 Form

		Form 209				
		Mean	SD	N	%	Alpha
Overall		364.4	43.4	1,961	100.0	0.69
Gender						
	Male	364.5	45.1	1,203	61.3	0.71
	Female	364.7	39.8	748	38.1	0.65
	Missing	*	*	10	0.5	*
Special Education						
	Yes	365.9	42.3	1,399	71.3	0.69
	No	360.8	45.9	553	28.2	0.68
	Exited	*	*	2	0.1	*
	Exited and placed in 504 <sup>a</sup>	*	*	0	0.0	*
	504	*	*	7	0.4	*
Ethnicity						
	American Indian	*	*	7	0.4	*
	Asian/Pacific Islander	*	*	25	1.3	*
	African American	360.3	45.4	1,251	63.8	0.69
	White	373.8	37.2	561	28.6	0.66
	Hispanic	364.5	39.4	102	5.2	0.65
	Missing	*	*	15	0.8	*
Limited English Proficient						
	Yes	*	*	6	0.3	*
	No	364.5	43.3	1,949	99.4	0.69
	Exited <sup>b</sup>	*	*	6	0.3	*

\* Statistics not reported for sample size less than 50 (N < 50).

<sup>a</sup> A 504 plan is a legal document falling under the provisions of the Rehabilitation Act of 1973 that provides a program of instructional services to assist students with special needs who are in a regular education setting.

<sup>b</sup> LEP Exited indicates students who have exited English language acquisition services.

**Table 13.12** Summary Statistics for Biology: MD Mod-HSA April 2009 Form

		Form 209				
		Mean	SD	N	%	Alpha
Overall		364.7	42.1	564	100.0	0.69
Gender						
	Male	363.4	42.4	352	62.4	0.70
	Female	366.7	41.6	212	37.6	0.67
	Missing	*	*	0	0.0	*
Special Education						
	Yes	362.0	44.2	452	80.1	0.70
	No	375.5	29.8	112	19.9	0.65
	Exited	*	*	0	0.0	*
	Exited and placed in 504 <sup>a</sup>	*	*	0	0.0	*
	504	*	*	0	0.0	*
Ethnicity						
	American Indian	*	*	2	0.4	*
	Asian/Pacific Islander	*	*	5	0.9	*
	African American	362.4	42.8	416	73.8	0.68
	White	372.1	38.7	103	18.3	0.69
	Hispanic	*	*	33	5.9	*
	Missing	*	*	5	0.9	*
Limited English Proficient						
	Yes	*	*	0	0.0	*
	No	364.6	42.1	562	99.6	0.69
	Exited <sup>b</sup>	*	*	2	0.4	*

\* Statistics not reported for sample size less than 50 (N < 50).

<sup>a</sup> A 504 plan is a legal document falling under the provisions of the Rehabilitation Act of 1973 that provides a program of instructional services to assist students with special needs who are in a regular education setting.

<sup>b</sup> LEP Exited indicates students who have exited English language acquisition services.

**Table 13.13** Summary Statistics for Biology: MD Mod-HSA May 2009 Forms

		Forms 109, 509				
		Mean	SD	N	%	Alpha
Overall		366.1	43.1	2,800	100.0	0.70
Gender						
	Male	366.5	43.9	1,809	64.6	0.72
	Female	365.2	41.5	967	34.5	0.67
	Missing	*	*	24	0.9	*
Special Education						
	Yes	366.0	42.7	2,299	82.1	0.69
	No	367.1	45.3	487	17.4	0.73
	Exited	*	*	5	0.2	*
	Exited and placed in 504 <sup>a</sup>	*	*	0	0.0	*
	504	*	*	9	0.3	*
Ethnicity						
	American Indian	*	*	13	0.5	*
	Asian/Pacific Islander	*	*	46	1.6	*
	African American	360.8	45.4	1,755	62.7	0.68
	White	376.1	37.5	726	25.9	0.71
	Hispanic	372.4	37.7	229	8.2	0.70
	Missing	*	*	31	1.1	*
Limited English Proficient						
	Yes	*	*	13	0.5	*
	No	366.3	43.1	2,772	99.0	0.70
	Exited <sup>b</sup>	*	*	15	0.5	*

\* Statistics not reported for sample size less than 50 (N < 50).

<sup>a</sup> A 504 plan is a legal document falling under the provisions of the Rehabilitation Act of 1973 that provides a program of instructional services to assist students with special needs who are in a regular education setting.

<sup>b</sup> LEP Exited indicates students who have exited English language acquisition services.

**Table 13.14** Summary Statistics for Biology: MD Mod-HSA Summer 2009 Forms

	Forms 309, 609					Forms 409, 709				
	Mean	SD	N	%	Alpha	Mean	SD	N	%	Alpha
Overall	360.4	46.9	171	100.0	0.74	*	*	47	100.0	*
Gender										
Male	356.2	53.4	111	64.9	0.79	*	*	27	57.4	*
Female	368.4	30.2	60	35.1	0.54	*	*	20	42.6	*
Missing	*	*	0	0.0	*	*	*	0	0.0	*
Special Education										
Yes	*	*	40	23.4	*	*	*	16	34.0	*
No	358.5	45.8	131	76.6	0.71	*	*	31	66.0	*
Exited	*	*	0	0.0	*	*	*	0	0.0	*
Exited and placed in 504 <sup>a</sup>	*	*	0	0.0	*	*	*	0	0.0	*
504	*	*	0	0.0	*	*	*	0	0.0	*
Ethnicity										
American Indian	*	*	1	0.6	*	*	*	0	0.0	*
Asian/Pacific Islander	*	*	3	1.8	*	*	*	0	0.0	*
African American	357.4	44.9	122	71.3	0.68	*	*	23	48.9	*
White	*	*	40	23.4	*	*	*	20	42.6	*
Hispanic	*	*	5	2.9	*	*	*	3	6.4	*
Missing	*	*	0	0.0	*	*	*	1	2.1	*
Limited English Proficient										
Yes	*	*	1	0.6	*	*	*	0	0.0	*
No	360.3	47.0	170	99.4	0.74	*	*	47	100.0	*
Exited <sup>b</sup>	*	*	0	0.0	*	*	*	0	0.0	*

\* Statistics not reported for sample size less than 50 (N < 50).

<sup>a</sup> A 504 plan is a legal document falling under the provisions of the Rehabilitation Act of 1973 that provides a program of instructional services to assist students with special needs who are in a regular education setting.

<sup>b</sup> LEP Exited indicates students who have exited English language acquisition services.

**Table 13.15** Summary Statistics for English: MD Mod-HSA October 2008 Forms

		Forms 108, 308				
		Mean	SD	N	%	Alpha
Overall		360.7	40.3	1,698	100.0	0.76
Gender						
	Male	359.0	42.0	1,091	64.3	0.77
	Female	363.7	36.8	600	35.3	0.74
	Missing	*	*	7	0.4	*
Special Education						
	Yes	357.6	40.7	870	51.2	0.73
	No	364.0	39.5	822	48.4	0.77
	Exited	*	*	1	0.1	*
	Exited and placed in 504 <sup>a</sup>	*	*	0	0.0	*
	504	*	*	5	0.3	*
Ethnicity						
	American Indian	*	*	5	0.3	*
	Asian/Pacific Islander	*	*	19	1.1	*
	African American	356.2	42.2	951	56.0	0.76
	White	366.0	38.5	626	36.9	0.76
	Hispanic	370.0	27.8	89	5.2	0.70
	Missing	*	*	8	0.5	*
Limited English Proficient						
	Yes	*	*	2	0.1	*
	No	360.7	40.3	1,695	99.8	0.76
	Exited <sup>b</sup>	*	*	1	0.1	*

\* Statistics not reported for sample size less than 50 ( $N < 50$ ).

<sup>a</sup> A 504 plan is a legal document falling under the provisions of the Rehabilitation Act of 1973 that provides a program of instructional services to assist students with special needs who are in a regular education setting.

<sup>b</sup> LEP Exited indicates students who have exited English language acquisition services.

**Table 13.16** Summary Statistics for English: MD Mod-HSA January 2009 Form

		Form 209				
		Mean	SD	N	%	Alpha
Overall		361.7	37.8	2,377	100.0	0.77
Gender						
	Male	360.4	39.2	1,502	63.2	0.78
	Female	364.3	34.8	863	36.3	0.77
	Missing	*	*	12	0.5	*
Special Education						
	Yes	363.2	35.8	1,586	66.7	0.77
	No	359.1	40.8	785	33.0	0.78
	Exited	*	*	1	0.0	*
	Exited and placed in 504 <sup>a</sup>	*	*	0	0.0	*
	504	*	*	5	0.2	*
Ethnicity						
	American Indian	*	*	12	0.5	*
	Asian/Pacific Islander	*	*	32	1.3	*
	African American	357.6	39.8	1,465	61.6	0.78
	White	370.3	32.2	725	30.5	0.75
	Hispanic	366.3	30.3	128	5.4	0.76
	Missing	*	*	15	0.6	*
Limited English Proficient						
	Yes	*	*	5	0.2	*
	No	361.8	37.8	2,366	99.5	0.77
	Exited <sup>b</sup>	*	*	6	0.3	*

\* Statistics not reported for sample size less than 50 ( $N < 50$ ).

<sup>a</sup> A 504 plan is a legal document falling under the provisions of the Rehabilitation Act of 1973 that provides a program of instructional services to assist students with special needs who are in a regular education setting.

<sup>b</sup> LEP Exited indicates students who have exited English language acquisition services.



**Table 13.17** Summary Statistics for English: MD Mod-HSA April 2009 Form

		Form 209				
		Mean	SD	N	%	Alpha
Overall		362.1	36.2	570	100.0	0.79
Gender						
	Male	360.9	37.2	371	65.1	0.77
	Female	364.1	34.7	194	34.0	0.81
	Missing	*	*	5	0.9	*
Special Education						
	Yes	360.4	36.6	466	81.8	0.79
	No	369.8	33.7	104	18.2	0.76
	Exited	*	*	0	0.0	*
	Exited and placed in 504 <sup>a</sup>	*	*	0	0.0	*
	504	*	*	0	0.0	*
Ethnicity						
	American Indian	*	*	2	0.4	*
	Asian/Pacific Islander	*	*	5	0.9	*
	African American	358.0	37.0	396	69.5	0.77
	White	374.5	29.0	124	21.8	0.75
	Hispanic	*	*	36	6.3	*
	Missing	*	*	7	1.2	*
Limited English Proficient						
	Yes	*	*	0	0.0	*
	No	362.0	36.2	568	99.6	0.78
	Exited <sup>b</sup>	*	*	2	0.4	*

\* Statistics not reported for sample size less than 50 ( $N < 50$ ).

<sup>a</sup> A 504 plan is a legal document falling under the provisions of the Rehabilitation Act of 1973 that provides a program of instructional services to assist students with special needs who are in a regular education setting.

<sup>b</sup> LEP Exited indicates students who have exited English language acquisition services.

**Table 13.18** Summary Statistics for English: MD Mod-HSA May 2009 Forms

		Forms 109, 509				
		Mean	SD	N	%	Alpha
Overall		358.3	40.5	3291	100.0	0.77
Gender						
	Male	357.3	41.5	2135	64.9	0.78
	Female	360.0	38.9	1117	33.9	0.77
	Missing	*	*	39	1.2	*
Special Education						
	Yes	358.8	39.8	2453	74.5	0.77
	No	356.6	42.8	818	24.9	0.79
	Exited	*	*	8	0.2	*
	Exited and placed in 504 <sup>a</sup>	*	*	0	0.0	*
	504	*	*	12	0.4	*
Ethnicity						
	American Indian	*	*	18	0.5	*
	Asian/Pacific Islander	360.0	44.5	58	1.8	0.76
	African American	354.3	42.2	2010	61.1	0.78
	White	365.0	37.1	892	27.1	0.77
	Hispanic	364.9	35.4	273	8.3	0.75
	Missing	*	*	40	1.2	*
Limited English Proficient						
	Yes	*	*	14	0.4	*
	No	358.3	40.5	3256	98.9	0.77
	Exited <sup>b</sup>	*	*	21	0.6	*

\* Statistics not reported for sample size less than 50 ( $N < 50$ ).

<sup>a</sup> A 504 plan is a legal document falling under the provisions of the Rehabilitation Act of 1973 that provides a program of instructional services to assist students with special needs who are in a regular education setting.

<sup>b</sup> LEP Exited indicates students who have exited English language acquisition services.

**Table 13.19** Summary Statistics for English: MD Mod-HSA Summer 2009 Forms

	Forms 309, 609					Forms 409, 709				
	Mean	SD	N	%	Alpha	Mean	SD	N	%	Alpha
Overall	358.9	37.6	194	100.0	0.74	*	*	46	100.0	*
Gender										
Male	354.3	38.9	121	62.4	0.72	*	*	27	58.7	*
Female	366.1	34.5	72	37.1	0.76	*	*	16	34.8	*
Missing	*	*	1	0.5	*	*	*	3	6.5	*
Special Education										
Yes	*	*	44	22.7	*	*	*	9	19.6	*
No	358.6	38.5	150	77.3	0.75	*	*	37	80.4	*
Exited	*	*	0	0.0	*	*	*	0	0.0	*
Exited and placed in 504 <sup>a</sup>	*	*	0	0.0	*	*	*	0	0.0	*
504	*	*	0	0.0	*	*	*	0	0.0	*
Ethnicity										
American Indian	*	*	1	0.5	*	*	*	1	2.2	*
Asian/Pacific Islander	*	*	5	2.6	*	*	*	0	0.0	*
African American	354.8	39.9	126	64.9	0.74	*	*	25	54.3	*
White	*	*	48	24.7	*	*	*	12	26.1	*
Hispanic	*	*	13	6.7	*	*	*	3	6.5	*
Missing	*	*	1	0.5	*	*	*	5	10.9	*
Limited English Proficient										
Yes	*	*	6	3.1	*	*	*	0	0.0	*
No	358.9	38.2	188	96.9	0.75	*	*	46	100.0	*
Exited <sup>b</sup>	*	*	0	0.0	*	*	*	0	0.0	*

\* Statistics not reported for sample size less than 50 (N < 50).

<sup>a</sup> A 504 plan is a legal document falling under the provisions of the Rehabilitation Act of 1973 that provides a program of instructional services to assist students with special needs who are in a regular education setting.

<sup>b</sup> LEP Exited indicates students who have exited English language acquisition services.

**Table 13.20** Summary Statistics for Government: MD Mod-HSA October 2008 Forms

		Forms 108, 308				
		Mean	SD	N	%	Alpha
Overall		359.4	47.2	1,381	100.0	0.73
Gender						
	Male	360.6	47.4	851	61.6	0.74
	Female	357.1	46.9	522	37.8	0.71
	Missing	*	*	8	0.6	*
Special Education						
	Yes	356.9	48.9	685	49.6	0.70
	No	362.1	45.1	692	50.1	0.76
	Exited	*	*	0	0.0	*
	Exited and placed in 504 <sup>a</sup>	*	*	0	0.0	*
	504	*	*	4	0.3	*
Ethnicity						
	American Indian	*	*	5	0.4	*
	Asian/Pacific Islander	*	*	17	1.2	*
	African American	355.0	49.5	782	56.6	0.74
	White	367.0	41.7	491	35.6	0.69
	Hispanic	353.7	52.3	74	5.4	0.82
	Missing	*	*	12	0.9	*
Limited English Proficient						
	Yes	*	*	3	0.2	*
	No	359.5	47.1	1,376	99.6	0.73
	Exited <sup>b</sup>	*	*	2	0.1	*

\* Statistics not reported for sample size less than 50 (N < 50).

<sup>a</sup> A 504 plan is a legal document falling under the provisions of the Rehabilitation Act of 1973 that provides a program of instructional services to assist students with special needs who are in a regular education setting.

<sup>b</sup> LEP Exited indicates students who have exited English language acquisition services.

**Table 13.21** Summary Statistics for Government: MD Mod-HSA January 2009 Form

		Form 209				
		Mean	SD	N	%	Alpha
Overall		356.0	46.9	2,000	100.0	0.79
Gender						
	Male	356.7	47.7	1,253	62.7	0.80
	Female	354.9	45.4	734	36.7	0.77
	Missing	*	*	13	0.7	*
Special Education						
	Yes	357.4	45.4	1,371	68.6	0.78
	No	352.9	49.9	621	31.1	0.81
	Exited	*	*	1	0.1	*
	Exited and placed in 504 <sup>a</sup>	*	*	0	0.0	*
	504	*	*	7	0.4	*
Ethnicity						
	American Indian	*	*	10	0.5	*
	Asian/Pacific Islander	*	*	27	1.4	*
	African American	354.2	48.4	1,241	62.1	0.80
	White	360.2	43.6	601	30.1	0.77
	Hispanic	353.1	47.6	104	5.2	0.71
	Missing	*	*	17	0.9	*
Limited English Proficient						
	Yes	*	*	3	0.2	*
	No	356.0	47.0	1,992	99.6	0.79
	Exited <sup>b</sup>	*	*	5	0.3	*

\* Statistics not reported for sample size less than 50 ( $N < 50$ ).

<sup>a</sup> A 504 plan is a legal document falling under the provisions of the Rehabilitation Act of 1973 that provides a program of instructional services to assist students with special needs who are in a regular education setting.

<sup>b</sup> LEP Exited indicates students who have exited English language acquisition services.

**Table 13.22** Summary Statistics for Government: MD Mod-HSA April 2009 Form

		Form 209				
		Mean	SD	N	%	Alpha
Overall		357.0	45.9	462	100.0	0.76
Gender						
	Male	354.4	49.3	286	61.9	0.76
	Female	361.9	38.7	173	37.4	0.76
	Missing	*	*	3	0.6	*
Special Education						
	Yes	355.0	46.0	385	83.3	0.74
	No	366.9	44.2	77	16.7	0.80
	Exited	*	*	0	0.0	*
	Exited and placed in 504 <sup>a</sup>	*	*	0	0.0	*
	504	*	*	0	0.0	*
Ethnicity						
	American Indian	*	*	1	0.2	*
	Asian/Pacific Islander	*	*	6	1.3	*
	African American	354.6	46.9	347	75.1	0.75
	White	365.1	44.1	79	17.1	0.77
	Hispanic	*	*	25	5.4	*
	Missing	*	*	4	0.9	*
Limited English Proficient						
	Yes	*	*	1	0.2	*
	No	357.1	45.9	460	99.6	0.76
	Exited <sup>b</sup>	*	*	1	0.2	*

\* Statistics not reported for sample size less than 50 (N < 50).

<sup>a</sup> A 504 plan is a legal document falling under the provisions of the Rehabilitation Act of 1973 that provides a program of instructional services to assist students with special needs who are in a regular education setting.

<sup>b</sup> LEP Exited indicates students who have exited English language acquisition services.

**Table 13.23** Summary Statistics for Government: MD Mod-HSA May 2009 Forms

		Forms 109, 509				
		Mean	SD	N	%	Alpha
Overall		361.5	50.0	2,950	100.0	0.78
Gender						
	Male	361.6	51.1	1,873	63.5	0.79
	Female	360.9	48.5	1,032	35.0	0.75
	Missing	*	*	45	1.5	*
Special Education						
	Yes	361.8	49.5	2,200	74.6	0.78
	No	361.1	51.3	735	24.9	0.78
	Exited	*	*	7	0.2	*
	Exited and placed in 504 <sup>a</sup>	*	*	0	0.0	*
	504	*	*	8	0.3	*
Ethnicity						
	American Indian	*	*	18	0.6	*
	Asian/Pacific Islander	370.6	46.3	50	1.7	0.81
	African American	357.3	50.7	1,791	60.7	0.76
	White	369.2	48.3	801	27.2	0.80
	Hispanic	364.6	48.7	234	7.9	0.77
	Missing	370.2	44.9	56	1.9	0.74
Limited English Proficient						
	Yes	*	*	13	0.4	*
	No	361.5	50.0	2,919	98.9	0.78
	Exited <sup>b</sup>	*	*	18	0.6	*

\* Statistics not reported for sample size less than 50 ( $N < 50$ ).

<sup>a</sup> A 504 plan is a legal document falling under the provisions of the Rehabilitation Act of 1973 that provides a program of instructional services to assist students with special needs who are in a regular education setting.

<sup>b</sup> LEP Exited indicates students who have exited English language acquisition services.

**Table 13.24** Summary Statistics for Government: MD Mod-HSA Summer 2009 Forms

	Forms 309, 609					Forms 409, 709				
	Mean	SD	N	%	Alpha	Mean	SD	N	%	Alpha
Overall	352.3	46.0	187	100.0	0.63	*	*	34	100.0	*
Gender										
Male	350.7	50.1	124	66.3	0.67	*	*	25	73.5	*
Female	355.4	36.5	63	33.7	0.50	*	*	9	26.5	*
Missing	*	*	0	0.0	*	*	*	0	0.0	*
Special Education										
Yes	354.9	42.4	61	32.6	0.62	*	*	11	32.4	*
No	351.0	47.7	126	67.4	0.64	*	*	23	67.6	*
Exited	*	*	0	0.0	*	*	*	0	0.0	*
Exited and placed in 504 <sup>a</sup>	*	*	0	0.0	*	*	*	0	0.0	*
504	*	*	0	0.0	*	*	*	0	0.0	*
Ethnicity										
American Indian	*	*	1	0.5	*	*	*	0	0.0	*
Asian/Pacific Islander	*	*	1	0.5	*	*	*	1	2.9	*
African American	349.8	46.8	132	70.6	0.57	*	*	20	58.8	*
White	*	*	46	24.6	*	*	*	12	35.3	*
Hispanic	*	*	7	3.7	*	*	*	1	2.9	*
Missing	*	*	0	0.0	*	*	*	0	0.0	*
Limited English Proficient										
Yes	*	*	1	0.5	*	*	*	0	0.0	*
No	352.2	46.1	186	99.5	0.63	*	*	33	97.1	*
Exited <sup>b</sup>	*	*	0	0.0	*	*	*	1	2.9	*

\* Statistics not reported for sample size less than 50 (N < 50).

<sup>a</sup> A 504 plan is a legal document falling under the provisions of the Rehabilitation Act of 1973 that provides a program of instructional services to assist students with special needs who are in a regular education setting.

<sup>b</sup> LEP Exited indicates students who have exited English language acquisition services.



## Demographic Characteristics

Summary statistics describing the demographic characteristics of the students who received scores on the MD Mod-HSAs are provided in Tables 13.25 to 13.28. Statistics are provided for the October 2008 and the January, April, May, and Summer 2009 administrations of Algebra, Biology, English, and Government. The results from online and paper test-takers were pooled for the analyses. All demographic results are based on the final Research file sent to MSDE.

**Table 13.25** Demographic Information for MD Mod-HSA Algebra

	October Forms		January Form		April Form		May Form		Summer Forms	
	N	%	N	%	N	%	N	%	N	%
Overall	1696	100.0	2535	100.0	513	100.0	4291	100.0	192	100.0
Gender										
Male	1034	61.0	1558	61.5	322	62.8	2794	65.1	117	60.9
Female	654	38.6	957	37.8	186	36.3	1465	34.1	75	39.1
Missing	8	0.5	20	0.8	5	1.0	32	0.7	0	0.0
Special Education										
Yes	847	49.9	1629	64.3	417	81.3	3267	76.1	51	26.6
No	845	49.8	899	35.5	94	18.3	994	23.2	141	73.4
Exited	0	0.0	0	0.0	0	0.0	10	0.2	0	0.0
Exited and placed in 504 <sup>a</sup>	0	0.0	0	0.0	0	0.0	0	0.0	0	0.0
504	4	0.2	7	0.3	2	0.4	20	0.5	0	0.0
Ethnicity										
American Indian	2	0.1	15	0.6	3	0.6	16	0.4	0	0.0
Asian/Pacific Islander	20	1.2	27	1.1	6	1.2	56	1.3	1	0.5
African American	1019	60.1	1619	63.9	381	74.3	2741	63.9	130	67.7
White	561	33.1	728	28.7	90	17.5	1058	24.7	46	24.0
Hispanic	80	4.7	110	4.3	28	5.5	373	8.7	10	5.2
Missing	14	0.8	36	1.4	5	1.0	47	1.1	5	2.6
Limited English Proficient										
Yes	4	0.2	5	0.2	0	0.0	25	0.6	1	0.5
No	1691	99.7	2525	99.6	511	99.6	4226	98.5	191	99.5
Exited <sup>b</sup>	1	0.1	5	0.2	2	0.4	40	0.9	0	0.0

<sup>a</sup> A 504 plan is a legal document falling under the provisions of the Rehabilitation Act of 1973 that provides a program of instructional services to assist students with special needs who are in a regular education setting.

<sup>b</sup> LEP Exited indicates students who have exited English language acquisition services.

**Table 13.26** Demographic Information for MD Mod-HSA Biology

	October Forms		January Form		April Form		May Form		Summer Forms	
	N	%	N	%	N	%	N	%	N	%
Overall	1,271	100.0	1,961	100.0	564	100.0	2,800	100.0	218	100.0
Gender										
Male	779	61.3	1,203	61.3	352	62.4	1,809	64.6	138	63.3
Female	487	38.3	748	38.1	212	37.6	967	34.5	80	36.7
Missing	5	0.4	10	0.5	0	0.0	24	0.9	0	0.0
Special Education										
Yes	682	53.7	1,399	71.3	452	80.1	2,299	82.1	56	25.7
No	586	46.1	553	28.2	112	19.9	487	17.4	162	74.3
Exited	0	0.0	2	0.1	0	0.0	5	0.2	0	0.0
Exited and placed in 504 <sup>a</sup>	0	0.0	0	0.0	0	0.0	0	0.0	0	0.0
504	3	0.2	7	0.4	0	0.0	9	0.3	0	0.0
Ethnicity										
American Indian	2	0.2	7	0.4	2	0.4	13	0.5	1	0.5
Asian/Pacific Islander	11	0.9	25	1.3	5	0.9	46	1.6	3	1.4
African American	794	62.5	1,251	63.8	416	73.8	1,755	62.7	145	66.5
White	399	31.4	561	28.6	103	18.3	726	25.9	60	27.5
Hispanic	60	4.7	102	5.2	33	5.9	229	8.2	8	3.7
Missing	5	0.4	15	0.8	5	0.9	31	1.1	1	0.5
Limited English Proficient										
Yes	2	0.2	6	0.3	0	0.0	13	0.5	1	0.5
No	1,268	99.8	1,949	99.4	562	99.6	2,772	99.0	217	99.5
Exited <sup>b</sup>	1	0.1	6	0.3	2	0.4	15	0.5	0	0.0

<sup>a</sup> A 504 plan is a legal document falling under the provisions of the Rehabilitation Act of 1973 that provides a program of instructional services to assist students with special needs who are in a regular education setting.

<sup>b</sup> LEP Exited indicates students who have exited English language acquisition services.

**Table 13.27** Demographic Information for MD Mod-HSA English

	October Forms		January Form		April Form		May Form		Summer Forms	
	N	%	N	%	N	%	N	%	N	%
Overall	1,698	100.0	2,377	100.0	570	100.0	3,291	100.0	240	100.0
Gender										
Male	1,091	64.3	1,502	63.2	371	65.1	2,135	64.9	148	61.7
Female	600	35.3	863	36.3	194	34.0	1,117	33.9	88	36.7
Missing	7	0.4	12	0.5	5	0.9	39	1.2	4	1.7
Special Education										
Yes	870	51.2	1,586	66.7	466	81.8	2,453	74.5	53	22.1
No	822	48.4	785	33.0	104	18.2	818	24.9	187	77.9
Exited	1	0.1	1	0.0	0	0.0	8	0.2	0	0.0
Exited and placed in 504 <sup>a</sup>	0	0.0	0	0.0	0	0.0	0	0.0	0	0.0
504	5	0.3	5	0.2	0	0.0	12	0.4	0	0.0
Ethnicity										
American Indian	5	0.3	12	0.5	2	0.4	18	0.5	2	0.8
Asian/Pacific Islander	19	1.1	32	1.3	5	0.9	58	1.8	5	2.1
African American	951	56.0	1,465	61.6	396	69.5	2,010	61.1	151	62.9
White	626	36.9	725	30.5	124	21.8	892	27.1	60	25.0
Hispanic	89	5.2	128	5.4	36	6.3	273	8.3	16	6.7
Missing	8	0.5	15	0.6	7	1.2	40	1.2	6	2.5
Limited English Proficient										
Yes	2	0.1	5	0.2	0	0.0	14	0.4	6	2.5
No	1,695	99.8	2,366	99.5	568	99.6	3,256	98.9	234	97.5
Exited <sup>b</sup>	1	0.1	6	0.3	2	0.4	21	0.6	0	0.0

<sup>a</sup> A 504 plan is a legal document falling under the provisions of the Rehabilitation Act of 1973 that provides a program of instructional services to assist students with special needs who are in a regular education setting.

<sup>b</sup> LEP Exited indicates students who have exited English language acquisition services.

**Table 13.28** Demographic Information for MD Mod-HSA Government

	October Forms		January Form		April Form		May Form		Summer Forms	
	N	%	N	%	N	%	N	%	N	%
Overall	1,381	100.0	2,000	100.0	462	100.0	2,950	100.0	221	100.0
Gender										
Male	851	61.6	1,253	62.7	286	61.9	1,873	63.5	149	67.4
Female	522	37.8	734	36.7	173	37.4	1,032	35.0	72	32.6
Missing	8	0.6	13	0.7	3	0.6	45	1.5	0	0.0
Special Education										
Yes	685	49.6	1,371	68.6	385	83.3	2,200	74.6	72	32.6
No	692	50.1	621	31.1	77	16.7	735	24.9	149	67.4
Exited	0	0.0	1	0.1	0	0.0	7	0.2	0	0.0
Exited and placed in 504 <sup>a</sup>	0	0.0	0	0.0	0	0.0	0	0.0	0	0.0
504	4	0.3	7	0.4	0	0.0	8	0.3	0	0.0
Ethnicity										
American Indian	5	0.4	10	0.5	1	0.2	18	0.6	1	0.5
Asian/Pacific Islander	17	1.2	27	1.4	6	1.3	50	1.7	2	0.9
African American	782	56.6	1,241	62.1	347	75.1	1,791	60.7	152	68.8
White	491	35.6	601	30.1	79	17.1	801	27.2	58	26.2
Hispanic	74	5.4	104	5.2	25	5.4	234	7.9	8	3.6
Missing	12	0.9	17	0.9	4	0.9	56	1.9	0	0.0
Limited English Proficient										
Yes	3	0.2	3	0.2	1	0.2	13	0.4	1	0.5
No	1,376	99.6	1,992	99.6	460	99.6	2,919	98.9	219	99.1
Exited <sup>b</sup>	2	0.1	5	0.3	1	0.2	18	0.6	1	0.5

<sup>a</sup> A 504 plan is a legal document falling under the provisions of the Rehabilitation Act of 1973 that provides a program of instructional services to assist students with special needs who are in a regular education setting.

<sup>b</sup> LEP Exited indicates students who have exited English language acquisition services.