

HSA and Graduation

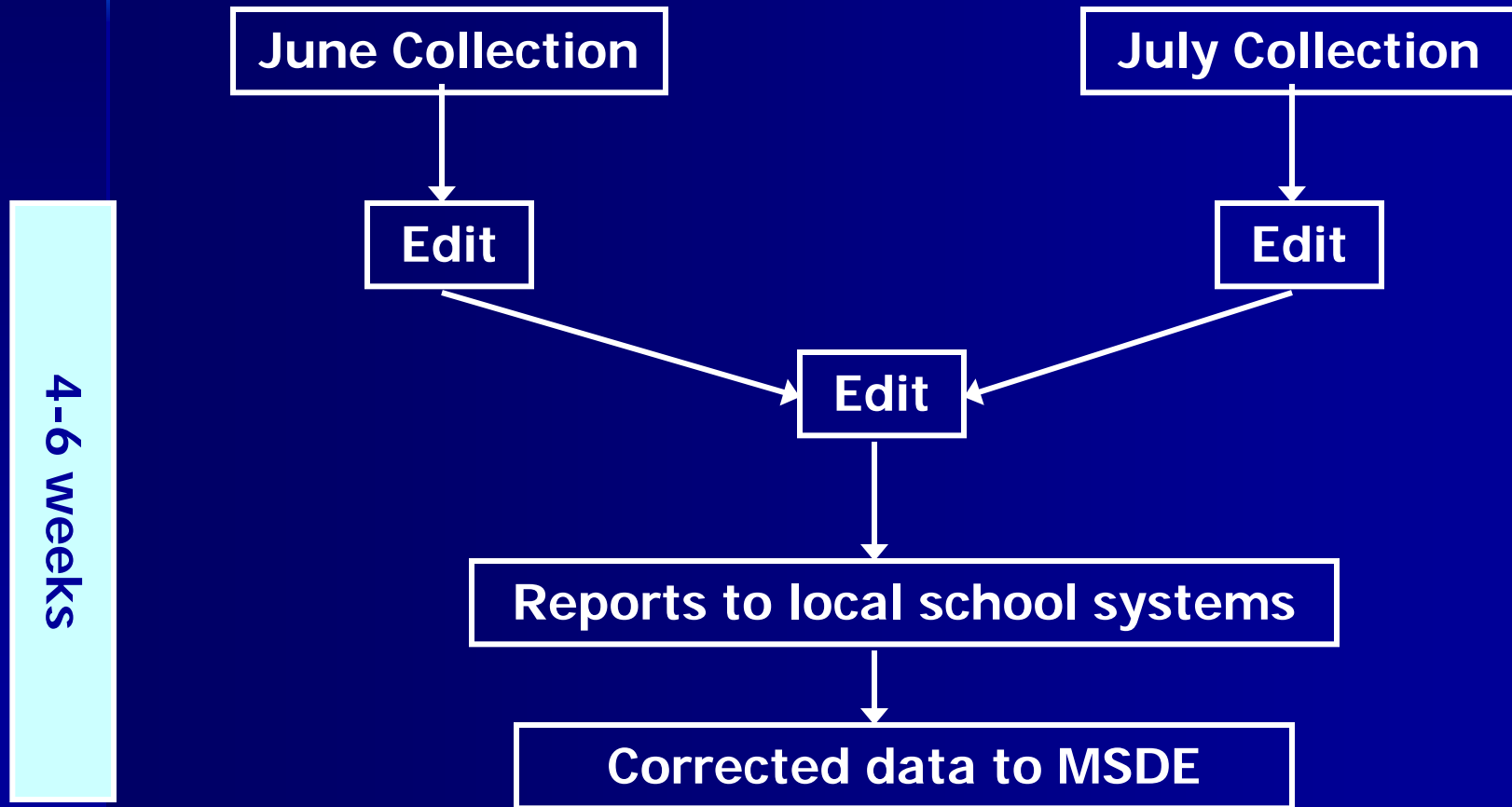
Report to the Board of Education

August 25, 2009

Transition to LDS

- MSDE is working toward a data system to track students across time and data collections
- Unique ID does provide ability to do some analyses "manually"
- Beginning to build capacity to report on student cohorts, beginning with 2007-2008

Data Collection and Validation Process



Cross LEA Reconciliation

- Purpose: Validate data submitted by school systems
 - Account for discrepancies in attendance data across LEAs
 - Discrepancies would inevitably effect Dropout and Grad Rates
 - Verify that systems have submitted accurate HSA data for students.

Cross LEA Reconciliation Corrections Affecting Dropout Rate

State ID	Key LEA	School	Grade	Entry Status	Entry Code	Entry Date	With Status	With Code	With Date
0101010101	03 01	0101 1001	09 09	R E	10 13	20080825 20090225	W	50	20081203

10 = Transfer to another school in the County
13 = Transfer to a MD public school outside the County
14 = Transfer outside the state
15 = Transfer to a nonpublic school within the County
16 = Transfer to a nonpublic school outside the County

22 = Transfer to a state institution
33 = Lack of interest
38 = Court action
50 = Whereabouts unknown



Cross LEA Reconciliation Corrections Affecting Dropout Rate

State ID	Key LEA	School	Grade	Entry Status	Entry Code	Entry Date	With Status	With Code	With Date
0101010101	03 01	0101 1001	09 09	R E	10 13	20080825 20090225	W	50	20081203

10 = Transfer to another school in the County
13 = Transfer to a MD public school outside the County
14 = Transfer outside the state
15 = Transfer to a nonpublic school within the County
16 = Transfer to a nonpublic school outside the County

22 = Transfer to a state institution
33 = Lack of interest
38 = Court action
50 = Whereabouts unknown




Cross LEA Reconciliation Corrections Affecting Dropout Rate

State ID	Key LEA	School	Grade	Entry Status	Entry Code	Entry Date	With Status	With Code	With Date
0101010101	03 01	0101 1001	09 09	R	10	20080825	W	50	20081203
				E	13	20090225			

0202020202	11	0202	09	R	16	20080826	T	13	20080828
------------	----	------	----	---	----	----------	---	----	----------

10 = Transfer to another school in the County
 13 = Transfer to a MD public school outside the County
 14 = Transfer outside the state
 15 = Transfer to a nonpublic school within the County
 16 = Transfer to a nonpublic school outside the County

22 = Transfer to a state institution
 33 = Lack of interest
 38 = Court action
 50 = Whereabouts unknown



Validation Process: Required Documentation of Transfer

- School or LEA must have official written documentation that the student enrolled in:
 - Another school, or
 - An educational program that culminates in the award of a regular high school diploma

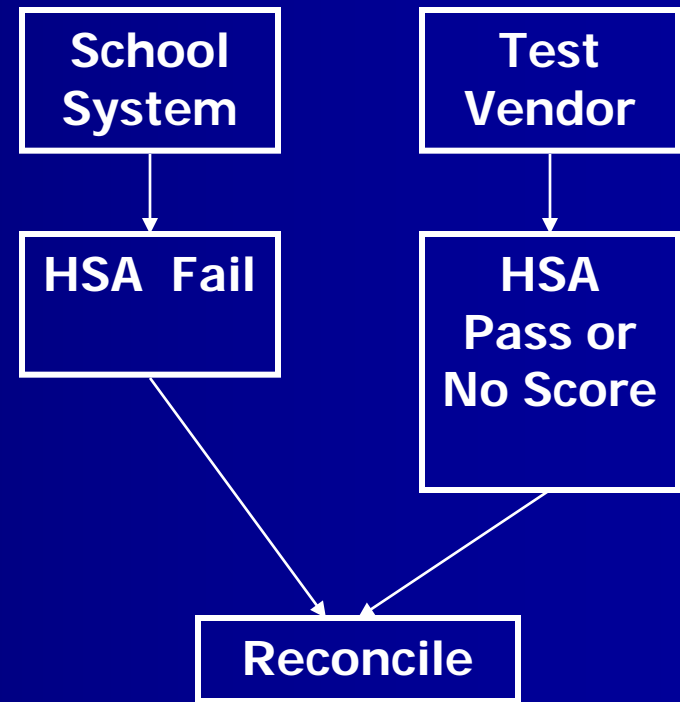
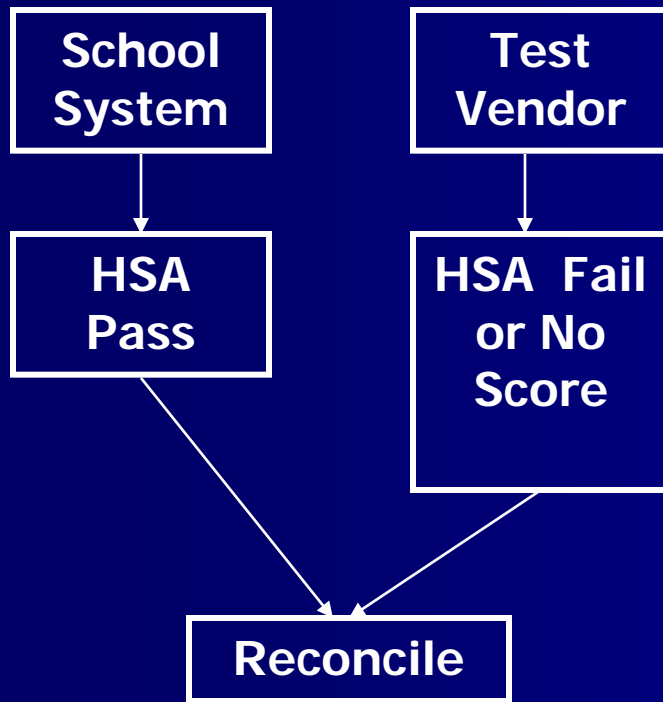
Validation Process: Required Documentation of Transfer

- Evidence in a state's data system
- Request for records
- Approved application for home schooling.
- Letter from receiving high school acknowledging the student's enrollment.

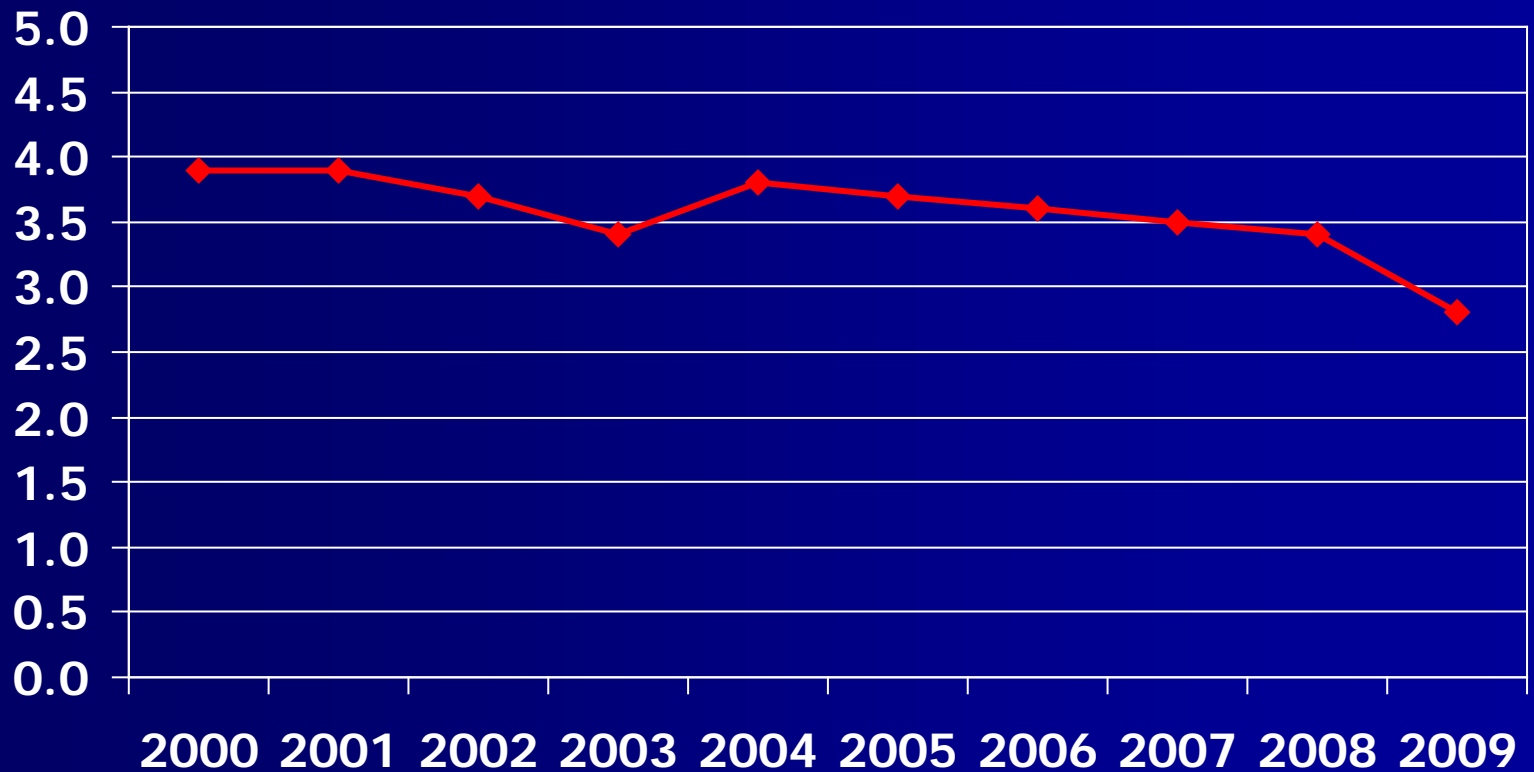
Validation Process: Confirmation of emigration or death

- A school or LEA must confirm in writing that a student has emigrated to another country or passed away, but need not obtain official documentation.
- A school administrator's memo to the student's file based on a phone conversation with a parent, stating that the student is leaving the country.
- Written confirmation that a student has passed away might include an obituary or a letter from a parent.

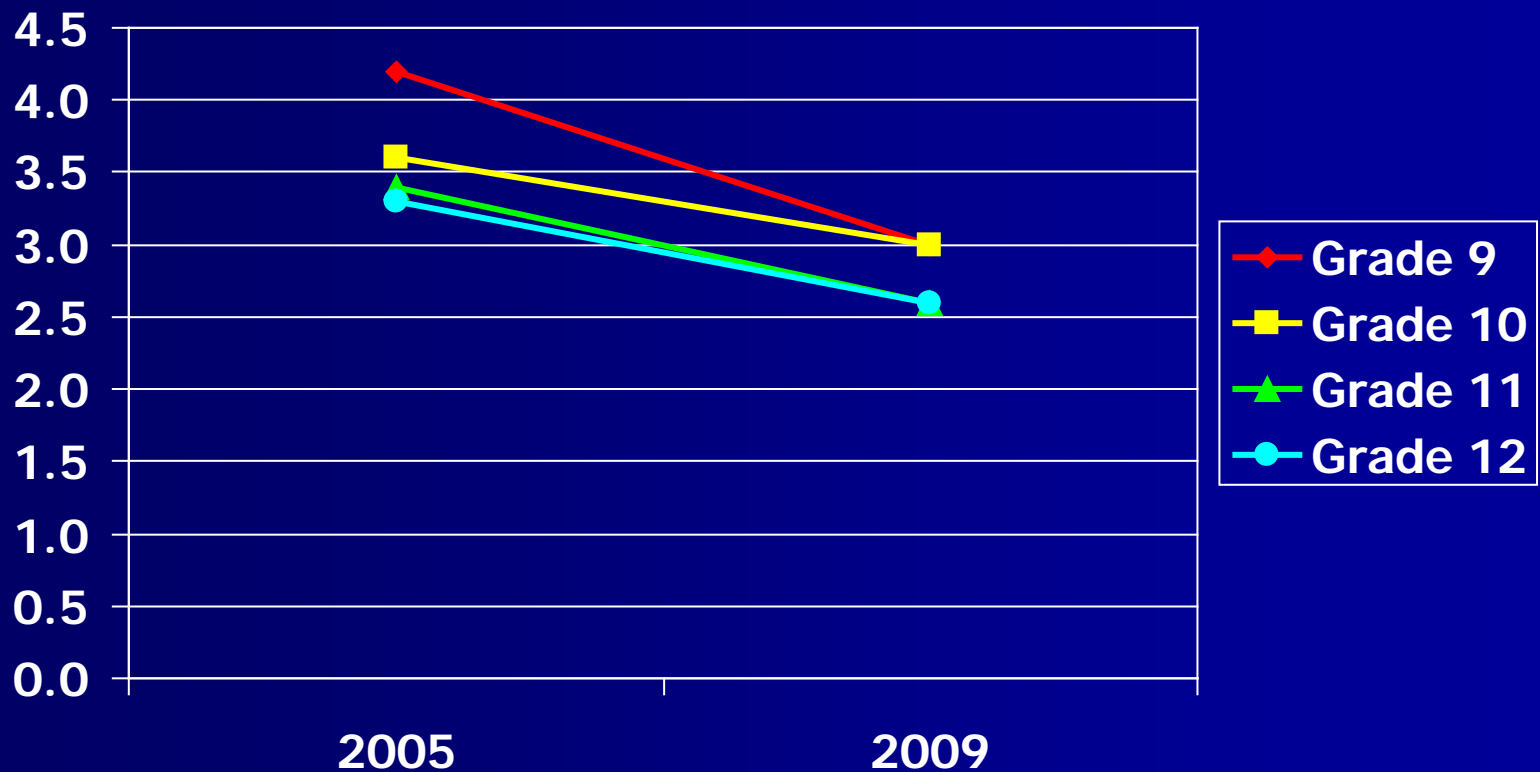
Validation Process: HSA Best Score



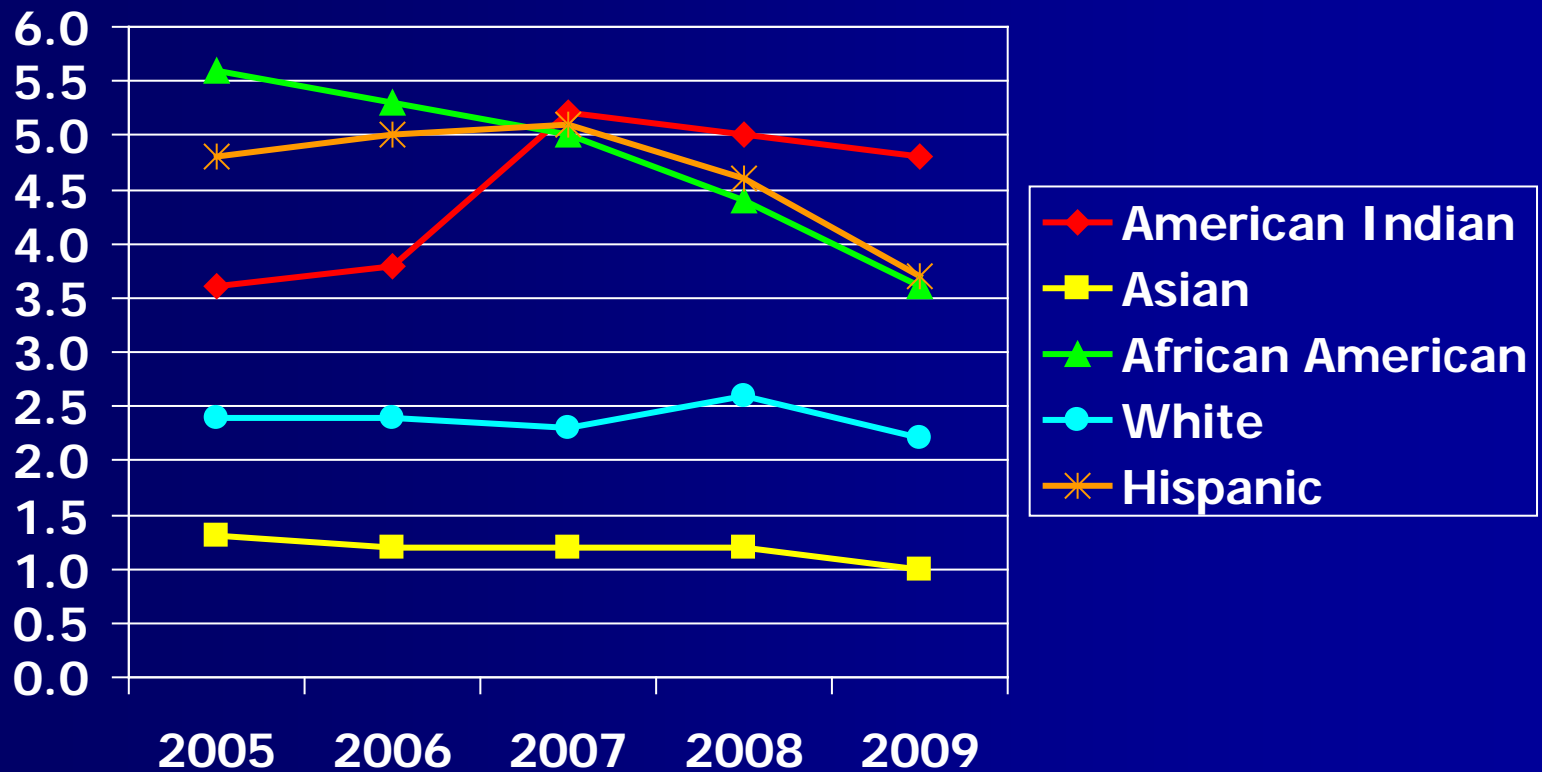
What we know so far – 2009 Drop Outs



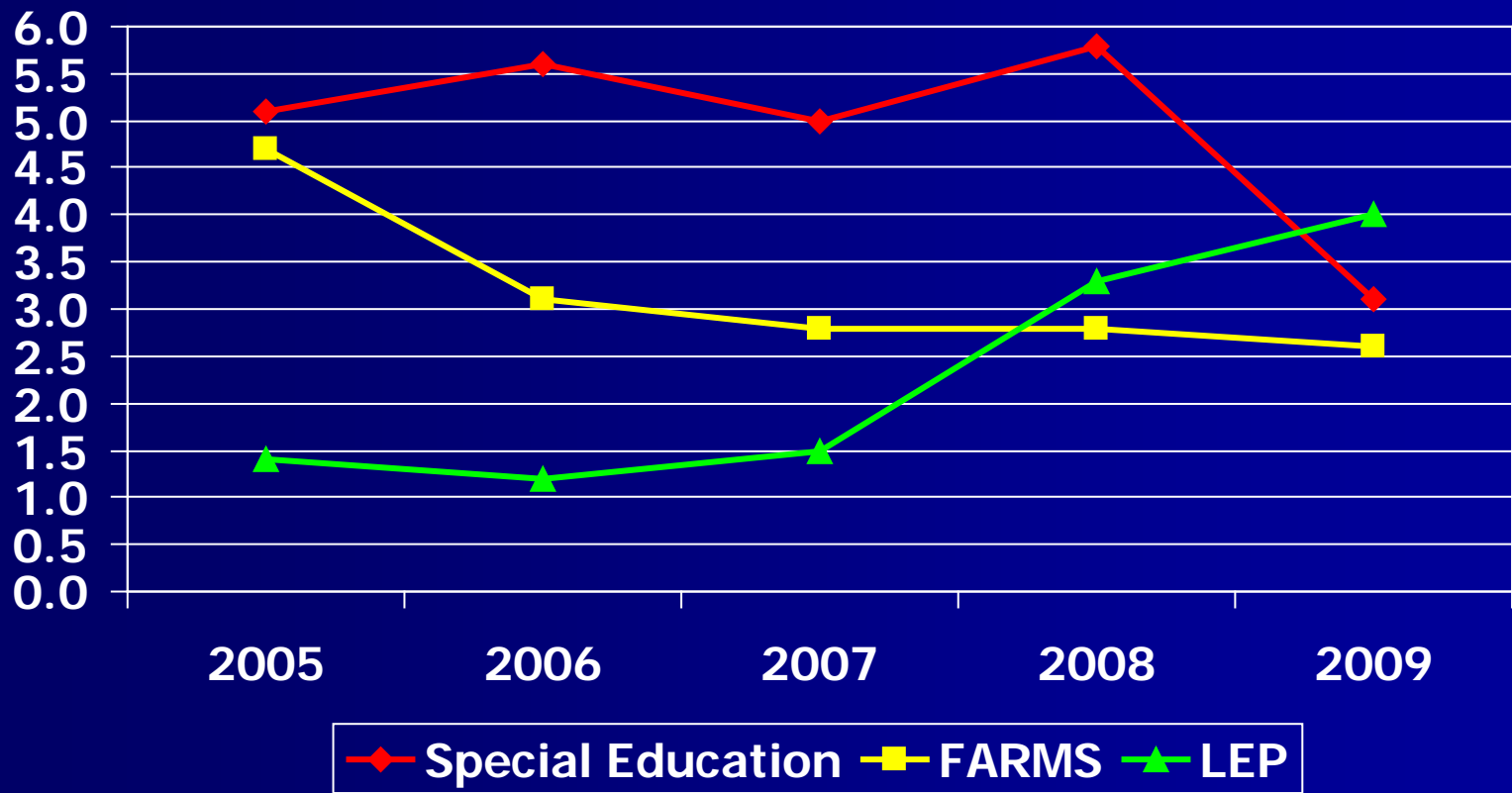
What we know so far – 2009 Drop Outs



What we know so far – Drop Outs by Race/Ethnicity



What we know so far – Drop Outs by Services



Summary

- Overall decrease in dropouts in all grades
- Lowest rate since initial data collection
- Improved retention of most subgroups
- Cross-LEA validated data
- Individual attention for students (HSA requirement)

Next Steps

Information	Approximate Timeline
Detailed analysis of how students met HSA requirements	September 2009
Details of students receiving waivers	September 2009
Details on Bridge Completers	September 2009

Next Steps

Information	Approximate Timeline
Status of Class of 2010 on HSA requirement	September 2009
AYP and Graduation Rate - 2009	September 2009
Combined drop outs from Class of 2011	January 2010

HSA and Graduation

Questions and Discussion