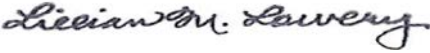


TO: Members of the State Board of Education
FROM: Lillian M. Lowery, Ed.D. 
DATE: October 30, 2013
SUBJECT: High School Assessment Results, Graduation and Drop-out Rate

On Wednesday, October 30, 2013, MSDE will release to the public the following data for the Class of 2012:

- High School Assessment (HSA) Results
- Graduation and Dropout Rates

This confidential memorandum provides you with data and highlights of these results for your information only until it is released to the public on Wednesday, October 30, 2013

Public release. As per past practice, detailed statewide, system, and local school High School Assessment (HSA), graduation, and drop-out rate data will be posted at noon on Wednesday, October 30, on the Maryland State Department of Education's report card Web site, www.mdreportcard.org.

As with previous releases, MSDE does expect that the data on how students met graduation requirements may change slightly as data are further scrutinized and validated.

Summary of High School Assessment (HSA) Results

The key findings in the 2013 High School Assessment graduation results show that:

- A very slight decrease in the percentage of students who passed all HSA tests or achieved the combined minimum scale score as compared to 2012
- Fewer than 0.1 percent of students received waivers for the graduation requirement by local school systems

The Results. There were a total of 59,587 "completers" in 2013. Of these, 58,776 students received diplomas and 811 students received Special Education Certificates. These certificates are for students with severe disabilities who complete their individualized education program, which does not align to the requirements of a Maryland diploma.

Just 10 completers entered Grade 9 prior to 2005, and therefore had no HSA requirement. The breakdowns of how the remaining students met their HSA requirements are as follows:

Passed 4:	45,019
Combined Score:	7,930
Bridge:	5,669
Waiver:	123

Of the 3,644 non-completers, a total of 983 failed to meet HSA requirements, but in nearly all cases other requirements were not met as well. There were an additional 2,661 non-completers who failed to meet requirements for reasons other than HSA.

Table 1 below shows the breakdown of results reported in percentages and for subgroups. The top line of the chart shows the data for the Classes of 2011 and 2012 for comparison purposes. The Class of 2013 had more students passing all four, fewer students meeting the combined score option, and more students completing the Bridge Plan. The Bridge Plan option continues to be especially important to English Language Learners (ELL) and students with disabilities – the exact students the Bridge Plan was designed to serve. Fewer waivers were issued in 2013 as well.

It is worth noting also that as of the close of the 2012-2013 school year, approximately 87.2 percent of 11th graders had already met their HSA requirement, either by passing all four tests, through the Combined Score, or through the Bridge Plan option.

Table 1. Percentage of Students Meeting HSA Requirements by Method and Subgroup

	No Req.	Passed All Four	Combined Score	Bridge	Waiver	Not Met Other	Not Met HSA Only
All Students <i>(Class of 2011)</i>	0.3	70.3	15.3	8.8	0.2	0.0	0.0
All Students <i>(Class of 2012)</i>	0.0	73.1	12.9	9.2	0.1	0.0	0.0
Class of 2013	0	72.0	11.5	9.2	0.1	0.0	0.0
Hispanic	0.1	63.4	15.0	12.0	0.3	0.0	0.0
American Indian	0.0	75.0	12.1	6.1	0.4	0.0	0.0
Asian	0.0	86.5	5.5	4.2	0.2	0.0	0.0
African American	0.0	54.4	16.7	17.9	0.2	0.1	0.0
Hawaiian/Pacific Islander	0.0	73.6	3.8	18.9	1.9	0.0	0.0
White	0.0	85.0	7.6	2.8	0.0	0.0	0.0
Two or More Races	0.0	83.0	9.1	3.5	0.1	0.0	0.1
Special Education	0.0	25.5	15.5	23.5	0.4	0.0	0.1
ELL	0.0	21.3	19.7	46.3	1.8	0.0	0.1
FARMs	0.0	53.4	17.2	17.2	0.3	0.0	0.1

Table 2 below shows the number of waivers for 2011 through 2013, in addition to the waivers by racial subgroup for 2013 and the percentage of each group receiving them. The number of waivers has steadily decreased every year.

Table 2. Waivers by Subgroup, 2011, 2012 and 2013 Comparison

	Class of 2011		Class of 2012		Class of 2013	
	Number	Percent of Group	Number	Percent of Group	Number	Percent of Group
All Students	133	0.2	123	0.2	80	0.1
Hispanic	26	0.5	23	0.5	17	0.3
American Indian	1	0.5	<5	0.0	<5	0.4
Asian	2	0.1	<5	0.0	6	0.2
African American	98	0.4	87	0.4	52	0.2
Hawaiian/Pacific Islander	0	0.0	<5	0.0	<5	1.9
White	5	0.0	10	0.0	<5	0.0
Two or More Races	1	0.1	<5	0.0	<5	0.1
Special Education	43	0.7	45	0.7	27	0.4
ELL	17	2.0	9	2.0	19	1.8
FARMs	73	0.4	47	0.4	52	0.3

Introduction of the Cohort Graduation Rate For Use in Accountability

In 2011, Maryland began to use the cohort graduation rate for accountability. Because Maryland’s accountability plan calls for both a four-year and a five-year rate, five years of a single cohort’s data is needed, with the graduation rate data “lagged” for one year. That means that the Class of 2010 data will be used for accountability in 2011, the Class of 2011 data will be used in 2012 and the class of 2012 will be used in 2013. The four-year rate for the Class of 2013 will be available after the September 30th enrollment file is processed this coming winter in order to reflect 2013 graduation data. Table 3 illustrates the cohort graduation rate data available as of the end of the 2012-2013 school year.

Table 3. Cohort Graduation Rates

	2010 Cohort		2011 Cohort		2012 Cohort	
	Four-Year Rate	Five-Year Rate	Four-Year Rate	Five-Year Rate	Four-Year Rate	Five-Year Rate
All Students	81.97	84.57	82.82	85.51	83.57	86.32
Hispanic	73.44	78.15	71.77	76.96	72.51	77.59
American Indian	75.93	78.01	73.81	77.29	79.46	81.61
Asian	93.04	94.53	93.10	94.89	93.44	95.41
African American	74.02	77.86	76.09	80.07	76.50	80.66
Hawaiian/Pacific Islander	90.24	95.12	88.46	88.89	75.00	82.35
White	88.27	89.65	89.10	90.38	90.49	91.66
Two or More Races	93.42	94.73	91.17	92.91	89.20	91.56
Special Education	54.72	60.94	56.57	62.68	57.41	63.82
ELL	56.98	66.64	54.07	66.14	54.82	67.44
FARMS	74.11	80.24	73.70	78.98	74.87	79.89

Cohort Drop-out Rate

With the capacity to calculate the cohort graduation rate comes the ability to calculate a drop-out rate for each cohort. This calculation provides a *cumulative* drop-out rate across the four years since the cohort first entered Grade 9. This rate includes *as drop-outs* those students who did not graduate after four years but did not return to school for a fifth year (those who “disappear” over the summer after their senior year.) Therefore, this rate is only available after the September 30 enrollment is completed for what would be the cohort’s fifth year. Table 4 shows the cohort drop-out rate for the Class of 2010 cohort (the total percentage of students who dropped out of the cohort that began Grade 9 for the first time in the fall of 2006) compared to the Class of 2011 (students entering Grade 9 in 2007) and the Class of 2012 (students entering grade 9 in 2008).

Table 4. 2010, 2011 and 2012 Cohort Drop-out Rate by Subgroup (including data from across the summer and into Year 5)

	2010 Cohort	2011 Cohort	2012 Cohort
All Students	11.93	11.22	10.22
Hispanic	16.51	18.65	18.06
American Indian	19.09	22.62	13.84
Asian	4.21	3.55	3.08
African American	16.38	14.60	13.57
Hawaiian/Pacific Islander	4.88	3.85	17.65
White	8.70	8.00	6.70
Two or More Races	2.56	5.47	6.99
Special Education	21.74	20.28	18.41
ELL	24.29	27.93	24.92
FARMs	13.66	14.42	13.51

ACTION:

For information only.



HSA, GRADUATION AND DROPOUTS

**Henry R. Johnson, Jr., Ed.D
Assistant State Superintendent
Division of Curriculum, Assessment and Accountability
October 30, 2013**



HIGH SCHOOL ASSESSMENTS

2013 methods to meet requirements

- ▶ Achieve a passing score on all tests
- ▶ Achieve a minimum COMBINED score allowing for high test scores to compensate for lower scores
- ▶ Complete a Bridge Plan for assessments not passed
- ▶ Receive a waiver for extenuating circumstances
- ▶ Receive a Special Education Certificate in place of a high school diploma

2013: Requirement Status

Grade 12 Enrollment

June 2013
62,232

Total Diplomas
58,776

SPED Certificates
811

Total Completers
59,587

Annual Dropouts
1941 in 2012*

* 2013 data not yet available.

Graduates

Passed All - 45,508 77%

Combined – 7264 12%

Bridge – 5831 10%

Waiver – 80 .1%

Graduates without HSA
requirement - 881

Non-Graduates

Not Met - HSA Only
0

Not Met - Other
2661

Non-Grads without
HSA requirement -
983

Total Non-Graduates
3644



2013 Non-Grads: A Closer Look

Total Non-Grads: 3644

- ▶ Working toward Special Ed Certificates: 979
- ▶ Second Semester Transfers (no HSA requirement): 2
- ▶ Foreign Exchange Students: 2
- ▶ Responsible for HSA: 2661

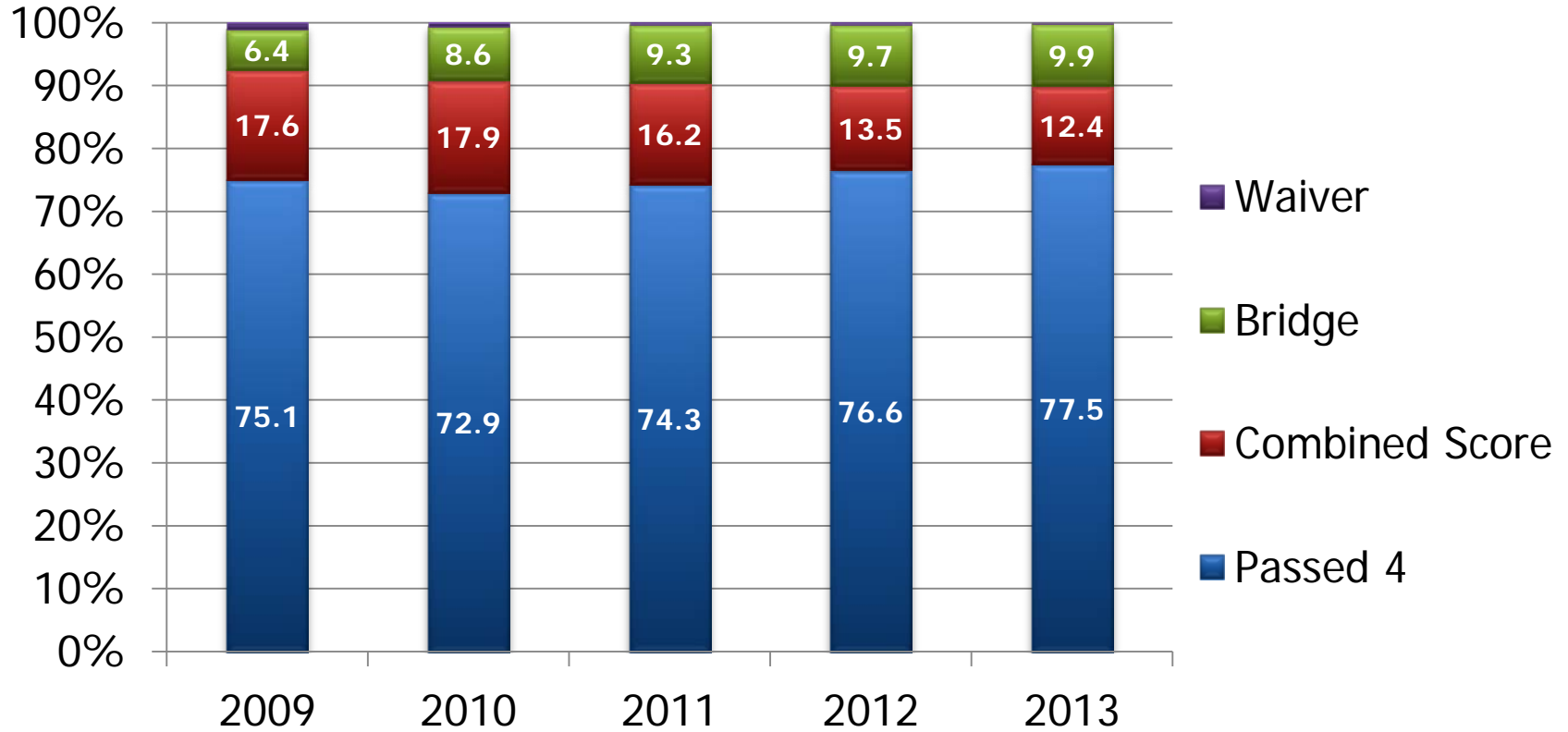
Breakdown for Non-Grads Responsible for HSA Requirement

- ▶ Met HSA, not Local Requirements: 1945
- ▶ HSA and Local Requirements Not Met: 716



2009 thru 2013

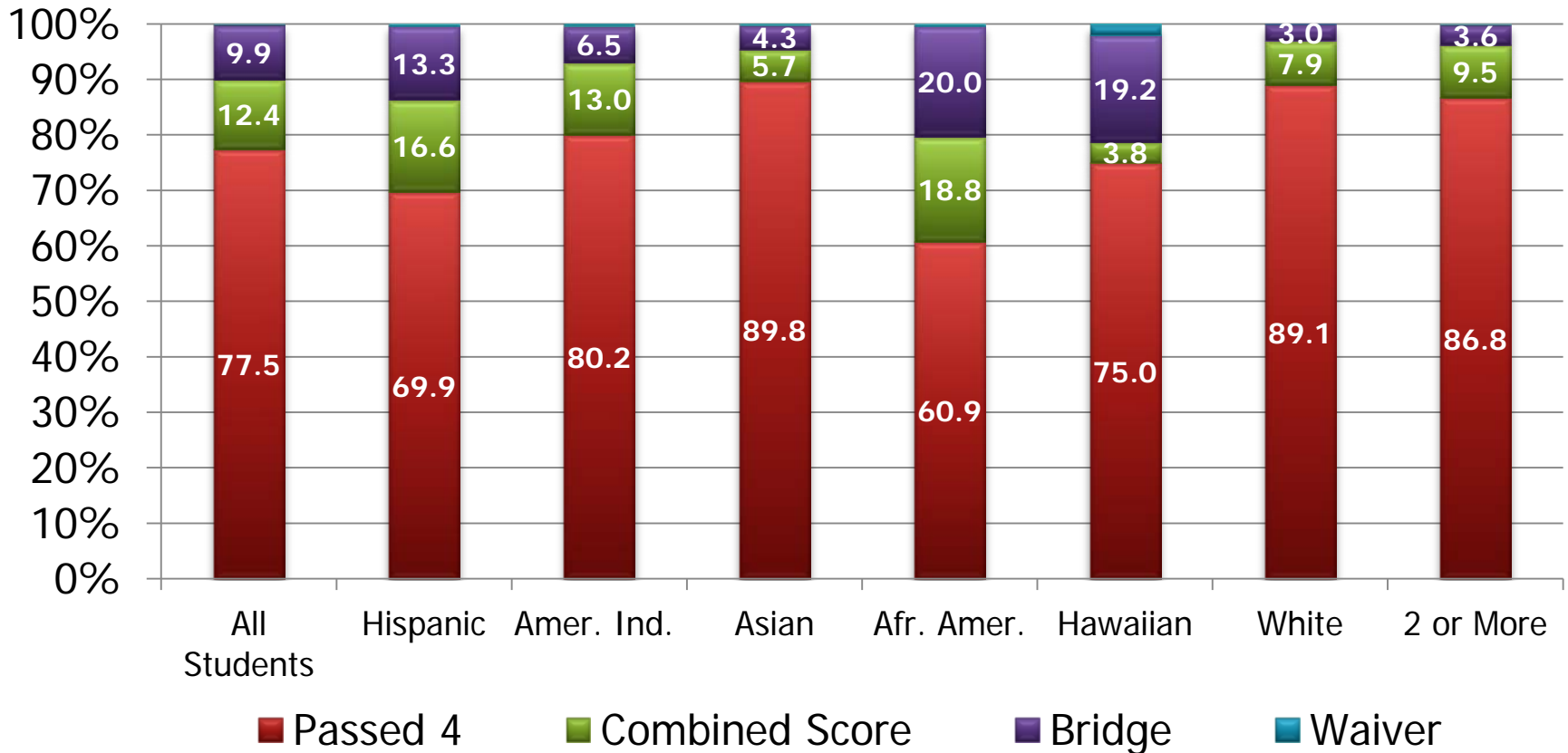
Graduates that Met Requirements



* Data labels not shown for percentages less than or equal to 2%.



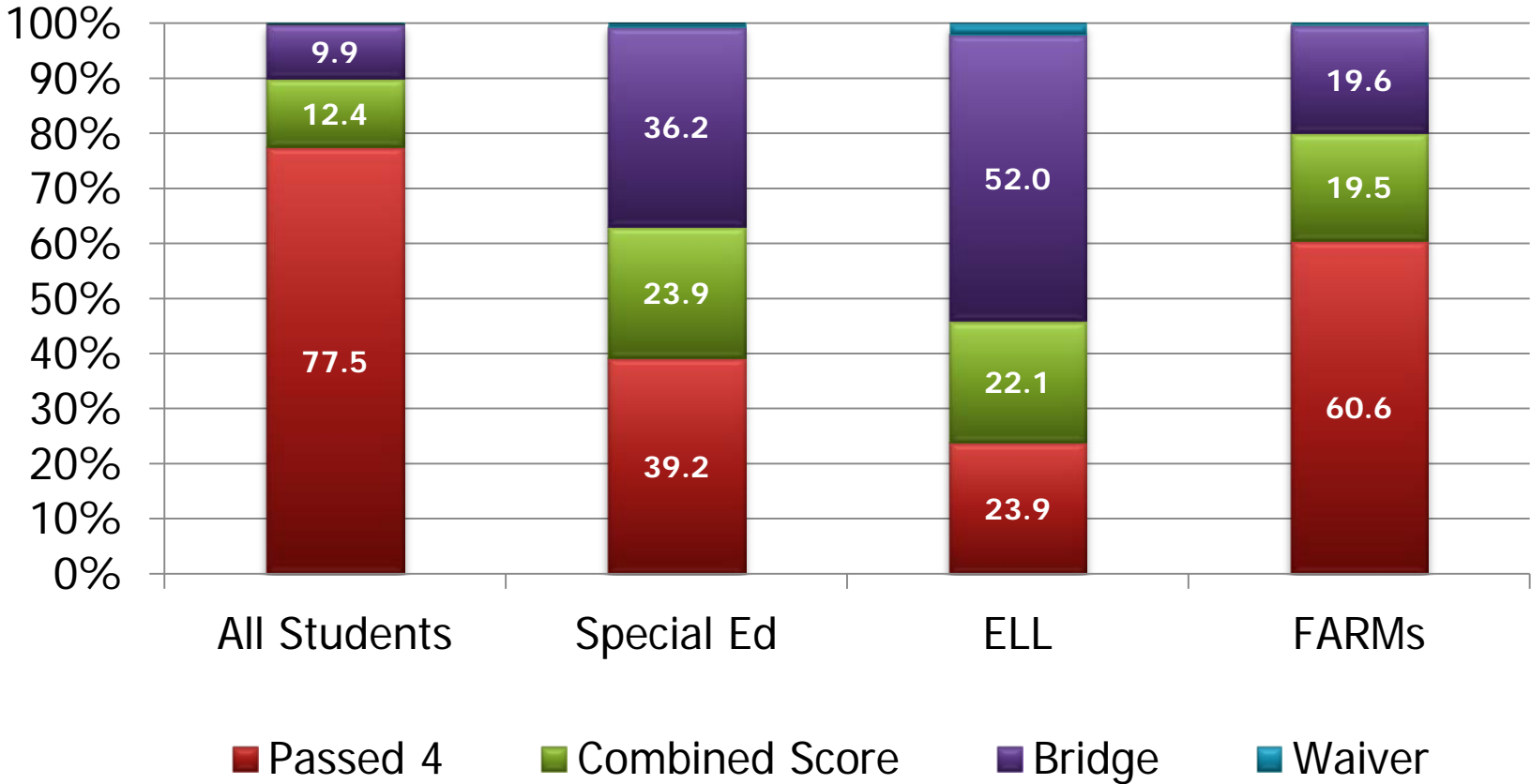
2013 Racial Subgroups Graduates that Met Requirements



* Data labels not shown for percentages less than or equal to 2%.



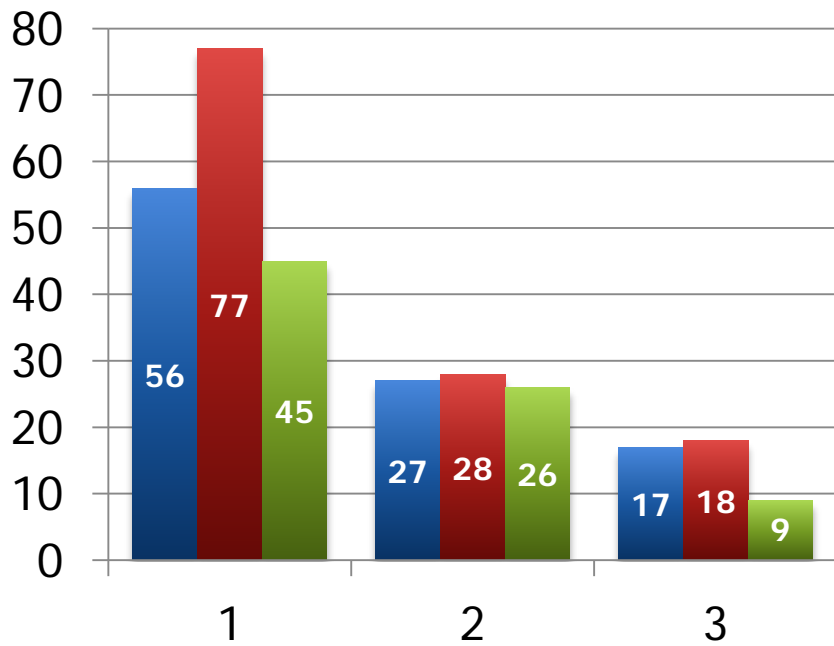
2013 Services Subgroups Graduates that Met Requirements



* Data labels not shown for percentages less than or equal to 2%.

2013 Graduates: Waivers

Number of Tests Waived

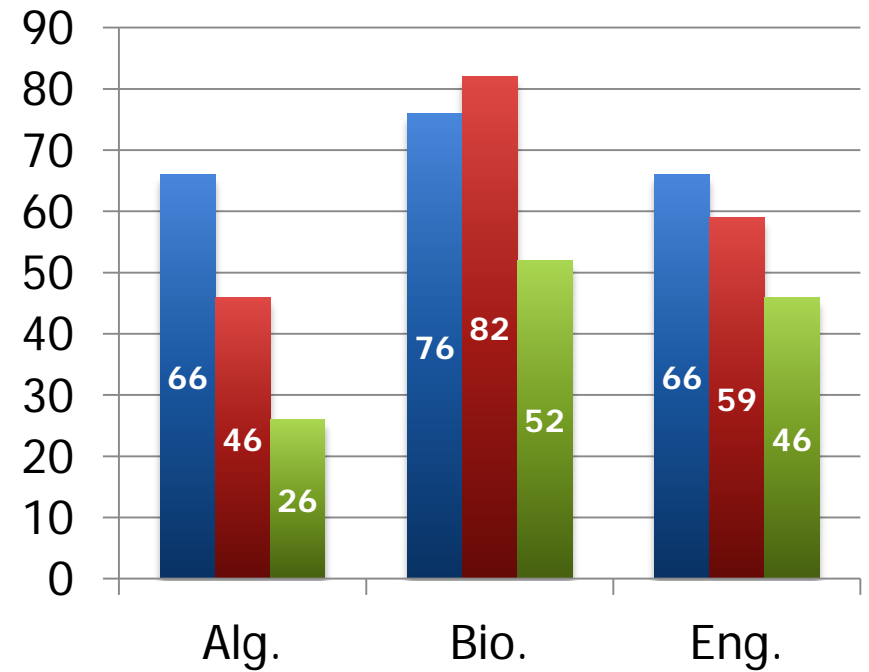


2011

2012

2013

Tests Waived





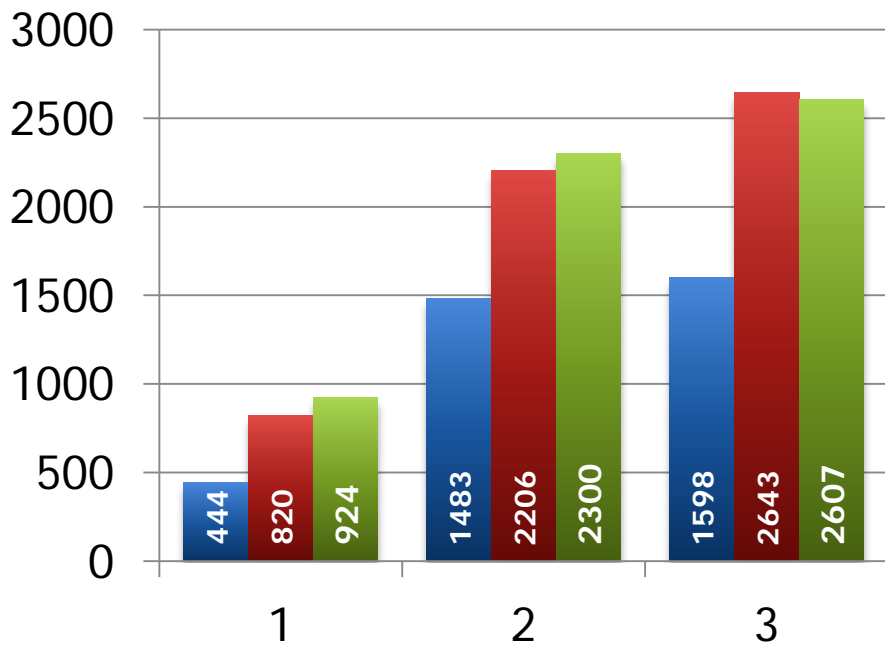
2013 Graduates Meeting by Waivers

Group	2012		2013	
	Number	Percent of Group	Number	Percent of Group
All Students	123	100.0	80	100.0
Special Ed	45	36.6	27	33.8
ELL	9	7.3	19	23.8
FARMs	47	38.2	52	65.0

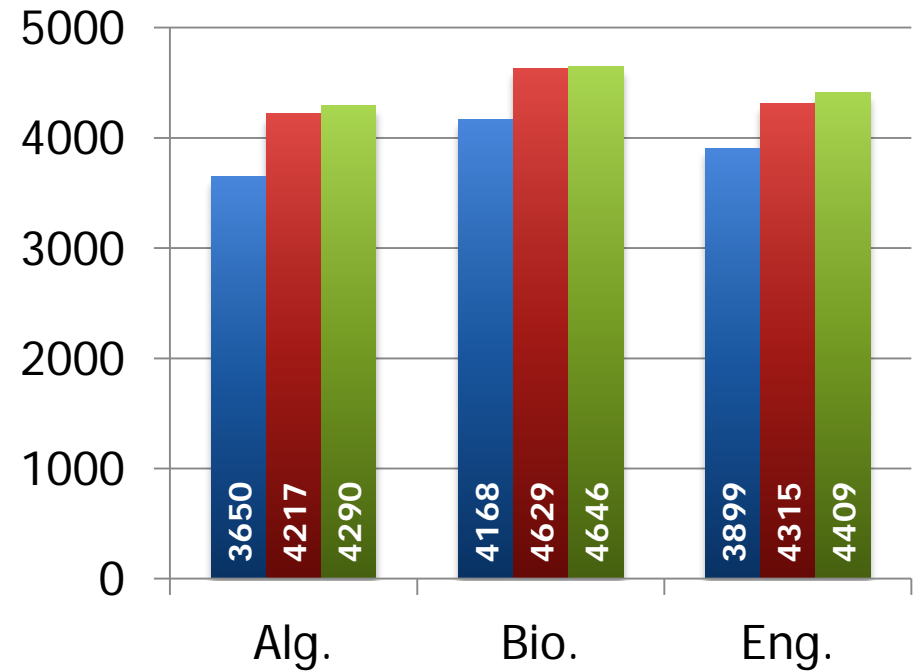


2013 Graduates: Bridges

Number of Bridges



Bridges Completed



2011

2012

2013

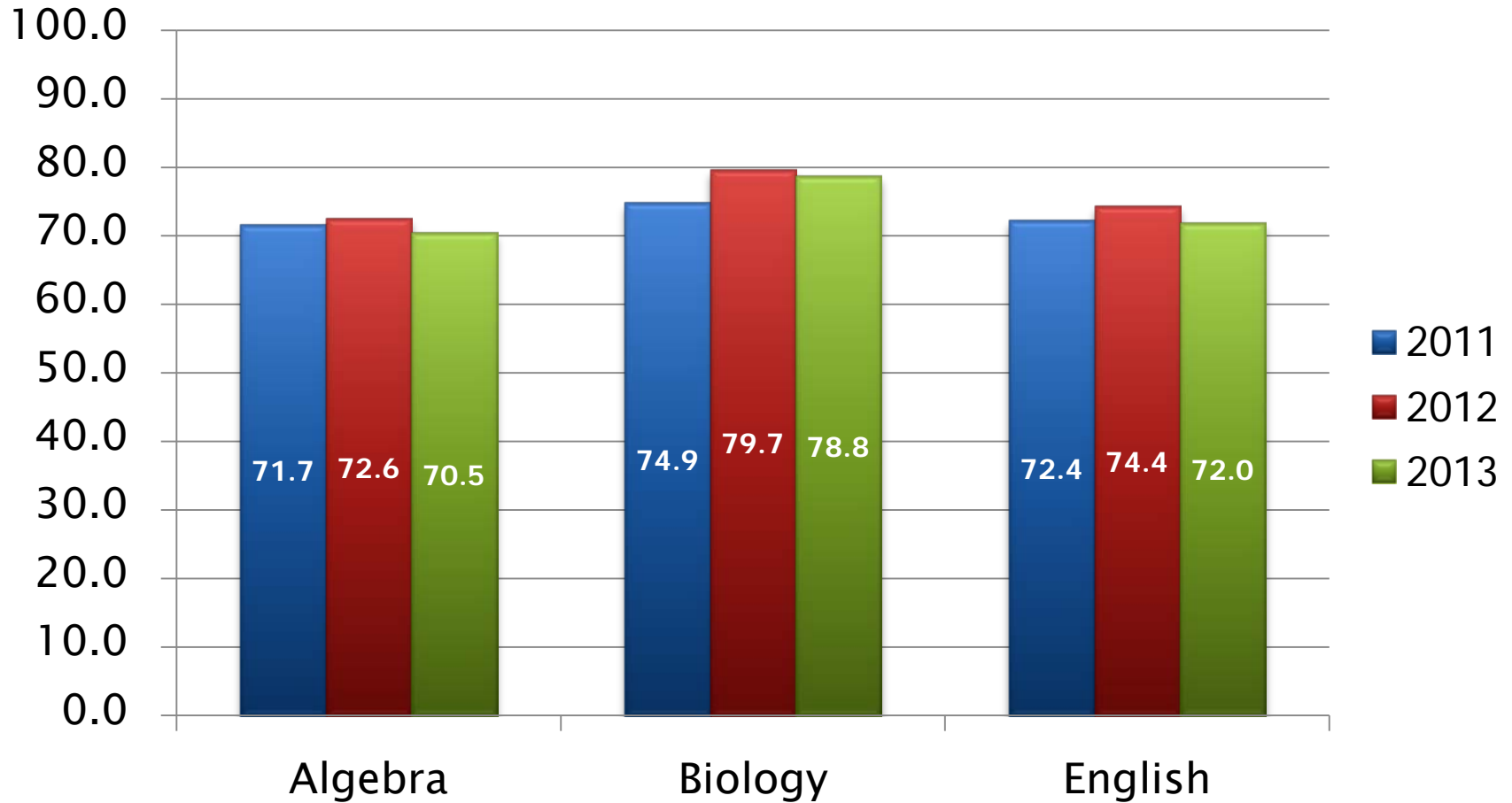


2013 Graduates Meeting by Bridges

Group	2012		2013	
	Number	Percent of Group	Number	Percent of Group
All Students	5669	100.0	5831	100.0
Special Ed	1445	26.2	1562	26.8
ELL	330	5.8	483	8.3
FARMs	2246	39.6	3510	60.2



HSA First Time Taker Pass Rates





HSA First Time Pass Rate Data by Racial Subgroup - 2013

	Algebra	Biology	English
All Students	70.5	78.8	72.0
Hispanic	61.3	72.9	61.0
American Indian	67.0	79.6	71.2
Asian	90.4	92.2	85.7
African American	53.2	62.2	57.0
Hawaiian/Pacific Islander	66.7	78.9	68.7
White	83.6	90.9	84.2
Two or More Races	78.9	88.9	81.6



HSA First Time Pass Rate Data by Services Subgroup - 2013

	Algebra	Biology	English
All Students	70.5	78.8	72.0
Special Education	28.8	41.8	26.7
FARMS	53.9	63.3	54.3
ELL	38.4	44.1	22.2

HSA First Time Pass Rate Data by Local School System Summary - 2013

Content	LEA Count by Pass Rate Range		
	> 80%	70 - 80%	<70
Algebra	11	3	10
Biology	16	5	3
English	5	14	5

Changes for 2014

- ▶ Incoming 9th Graders again required to pass Government assessment
- ▶ Current 9th Graders will be taking the current HSA's for the MD diploma
- ▶ Field testing of PARCC assessments

Graduation

2013 Cohort Graduation Rate not available



Definition :

Four-Year Adjusted Cohort Rate

The number of students who graduate in four years with a regular high school diploma divided by the number of students who form the adjusted cohort for that graduating class.

- Follows a cohort, or a group of students, who begin as first-time ninth graders in a particular school year.
- For high schools that start after grade nine, the cohort is calculated based on the earliest high school grade.

Cohort Grad Rate Trend

	2010 Cohort		2011 Cohort		2012 Cohort	
	Four-Year Rate	Five-Year Rate	Four-Year Rate	Five-Year Rate	Four-Year Rate	Five-Year Rate
All Students	81.97	84.57	82.82	85.51	83.57	86.32
Hispanic	73.44	78.15	71.77	76.96	72.51	77.59
American Indian	75.93	78.01	73.81	77.29	79.46	81.61
Asian	93.04	94.53	93.10	94.89	93.44	95.41
African American	74.02	77.86	76.09	80.07	76.50	80.66
Hawaiian/Pacific Islander	90.24	95.12	88.46	88.89	75.00	82.35
White	88.27	89.65	89.10	90.38	90.49	91.66
Two or More Races	93.42	94.73	91.17	92.91	89.20	91.56
Special Education	54.72	60.94	56.57	62.68	57.41	63.82
ELL	56.98	66.64	54.07	66.14	54.82	67.44
FARMS	74.11	80.24	73.70	78.98	74.87	79.89

Dropouts

2013 Cohort Dropout Rate not available



Cohort Dropout Rate

- ▶ Requires a Longitudinal Data System (4 years of data)
- ▶ Reflects cumulative drop outs across a 4 and 5 – year period from a cohort group entering Grade 9 at the same time
- ▶ Students are only counted once (final status)

Other Cohort Dropout Features

- ▶ Cohort drop out rate includes *as drop outs*
 - Students who do not continue from the end of one school year to the beginning of the next (cross summer)
 - Any student classified as a transfer who cannot be verified as enrolled somewhere else
 - Non-graduates at the end of Year 4 who do not re-enroll in Year 5.

Cohort Drop Out Rate Data

Rate	2010	2011	2012
Through beginning of Year 5	11.93	11.22	10.22

Cohort Drop Out Rates by Subgroup

	2011 Cohort	2012 Cohort
All Students	11.22	10.22
Hispanic	18.65	18.06
American Indian	22.62	13.84
Asian	3.55	3.08
African American	14.60	13.57
Hawaiian/Pacific Islander	3.85	17.65
White	8.00	6.70
2 or More	5.47	6.99

Cohort Drop Out Rates by Subgroup

	2011 Cohort	2012 Cohort
All Students	11.22	10.22
Special Education	20.28	18.41
FARMs	14.42	13.51
ELL	27.93	24.92

HSA and Graduation

Questions and Discussion

